



Western Michigan University
ScholarWorks at WMU

Legacy Scout Tickets from Pure Oil Company

8-20-2021

MGRRE_PureOilScoutTickets_Horner, Frank S. Trustee (Nwch Ut Tc 4)_4_21113098860000

MGRRE

Western Michigan University

Follow this and additional works at: <https://scholarworks.wmich.edu/pure>



Part of the Geology Commons

WMU ScholarWorks Citation

MGRRE, "MGRRE_PureOilScoutTickets_Horner, Frank S. Trustee (Nwch Ut Tc 4)_4_21113098860000" (2021). *Legacy Scout Tickets from Pure Oil Company*. 5915.
<https://scholarworks.wmich.edu/pure/5915>

This Document is brought to you for free and open access via ScholarWorks at WMU. It has been accepted for inclusion in Legacy Scout Tickets from Pure Oil Company by an authorized administrator of ScholarWorks at WMU. See the National Digital Catalogue - Science Base Catalogue for more collections submitted by MGRRE.



**MGRRE_PureOilScoutTickets_Horner, Frank S. Trustee (Nwch Ut Tc
4)_4_21113098860000**

API 21113098860000

Permit Number 9886

Lease Name Horner, Frank S. Trustee (Nwch Ut Tc 4)

Well Number 4

County Missaukee

Township 24N

Range 05W

Section 11

2021 DEQ or Pure co_name Oryx Energy Company

Pure Number 107

Latitude 44.48122

Longitude -84.88564

THE PURE OIL COMPANY

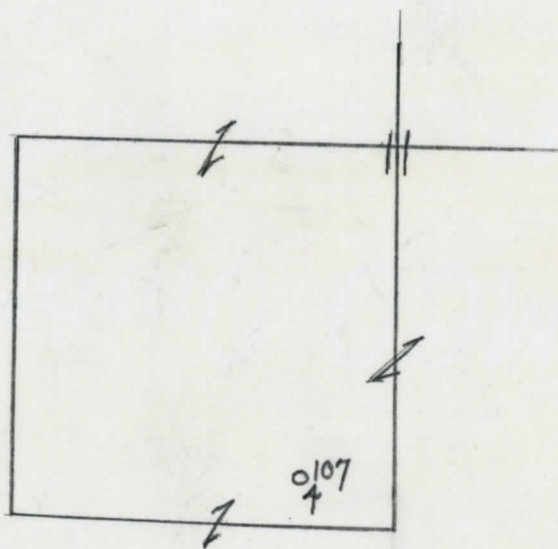
LOCATION REPORT

Date December 2, 1942 A.F.E. No. Frank S. Horner Tr.
 Division Mich. Producing District _____ Lease Frank S. Horner, Tr.
 Acres _____ Lease No. _____ Elevation _____ Well No. 4 (Serial No. 107)
 Quadrangle C 5 1/2 SE SW Sec. 11 Twp. 24 N Rge. 5 W Dist. Norwich
 Survey _____ County Missaukee State Michigan
 Operator Sun Oil Company Map Norwich Twp. Missaukee Co
1590' 7590

_____	_____	Feet from North Line of Lease
_____	_____	“ “ East “ “ “
_____	_____	“ “ South “ “ “
<u>1980'</u>	<u>1980</u>	“ “ West “ “ “
_____	_____	Feet from North Line of Section
<u>660'</u>	<u>660</u>	“ “ East “ <u>1/4</u> “
<u>330'</u>	<u>330</u>	“ “ South “ “ “
_____	_____	“ “ West “ “ “

LEGEND

- Location
- ☀ Gas Well
- Oil Well
- ☀ Gas - Distillate Well
- ∅ or ○ Dry Hole
- Dry Showing Oil
- ☀ Dry Showing Gas
- ⊖ Abandoned Location
- ☀ or ⊖ Abandoned Gas Well
- or ● Abandoned Oil Well
- or ○ Input Well



Scale _____

Remarks: _____

Submitted by N Civil Engineer Approved by _____ Division Manager
 Approved by _____ Vice-President - General Manager

Michigan Producing Division

Date April 28, 1943 No. 107
 State Mich. County Missaukee Dist. Norwich Sec. 11 Twp. 24 N Rge. 5 W
 Well No. 4 (County No.) 107 Farm F. S. Horner, Tr. Acres _____
 Operator Sun Oil Company Information secured From Scouting Department By _____
 Date well started 12-10-42 Date well completed 4-4-43 Elevation 1214.1

PRODUCTION RECORD

1st 24 hours natural 35 Barrels (Swabbed)
 2nd 24 hours natural _____
 Date of shot 4-8-43 and 4-15-43 No. of quarts _____ From _____ to _____ From _____ to _____
 Date of acid 4-15-43 No. of gallons 3000
 1st 24 hours after acid 32 Barrels (Swabbed)
 shot
 2nd 24 hours after acid _____

FORMATION AND CASING RECORD

Formation	Top	Bottom	Top Pay	Bottom Pay	Remarks	Casing	
						Size	Set at
Antrim	1705	2370			See remarks below.	8-1/4"	453
Traverse Lime	2398	S.L.W.				5-3/16"	3086-Puller
Dundee	3080		4379	4384		5-3/16"	4347
			4395	4397			
			4412	4415			
Total Depth		4475					

Remarks Small show oil 3080 to 3084; small show oil and gas 3086 to 3092 - 150 ft. salt water 3092 to 3100.

Signed D. C. Shackelford