



Western Michigan University  
ScholarWorks at WMU

---

Legacy Scout Tickets from Pure Oil Company

---

8-20-2021

**MGRRE\_PureOilScoutTickets\_Buning, A\_2\_21113099680000**

MGRRE

*Western Michigan University*

Follow this and additional works at: <https://scholarworks.wmich.edu/pure>



Part of the Geology Commons

---

#### **WMU ScholarWorks Citation**

MGRRE, "MGRRE\_PureOilScoutTickets\_Buning, A\_2\_21113099680000" (2021). *Legacy Scout Tickets from Pure Oil Company*. 5927.

<https://scholarworks.wmich.edu/pure/5927>

This Document is brought to you for free and open access via ScholarWorks at WMU. It has been accepted for inclusion in Legacy Scout Tickets from Pure Oil Company by an authorized administrator of ScholarWorks at WMU. See the National Digital Catalogue - Science Base Catalogue for more collections submitted by MGRRE.



---

**MGRRE\_PureOilScoutTickets\_Buning, A\_2\_21113099680000**

API 21113099680000

Permit Number 9968

Lease Name Buning, A

Well Number 2

County Missaukee

Township 22N

Range 06W

Section 35

2021 DEQ or Pure co\_name Lease Management, Incorporated

Pure Number 120

Latitude 44.26141

Longitude -85.0109

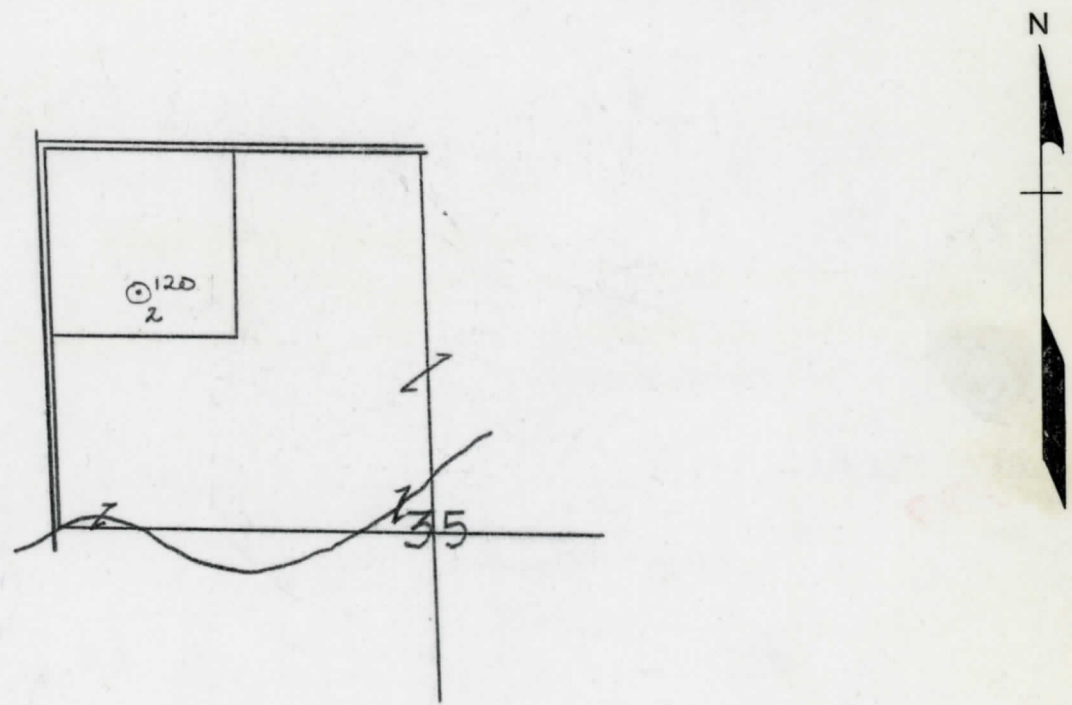
THE PURE OIL COMPANY  
LOCATION REPORT

Date February 3, 1943 A.F.E. No. \_\_\_\_\_  
 Division Michigan Producing District \_\_\_\_\_ Lease A. Buning  
 Acres \_\_\_\_\_ Lease No. \_\_\_\_\_ Elevation \_\_\_\_\_ Well No. 2 (Serial No. 120)  
 Quadrangle C 3 1/2 NW NW Sec. 35 Twp. 22 N Rge. 6 W Twp. Aetna  
 Survey \_\_\_\_\_ County Missaukee State Michigan  
 Operator Gulf Ref. Co. Map Aetna Twp - Missaukee Co.  
Gulf Refining Company Aetna Township, Missaukee County

990 990 Feet from North Line of Lease  
 " " East " " "  
 " " South " " "  
660 660 " " West " 1/4 "  
990 990 Feet from North Line of Section  
 " " East " " "  
 " " South " " "  
660 660 " " West " " "

LEGEND

- Location
- ☀ Gas Well
- Oil Well
- ☀ Gas - Distillate Well
- or ○ Dry Hole
- or ● Dry Showing Oil
- ☀ Dry Showing Gas
- ⊗ Abandoned Location
- ☀ or ☀ Abandoned Gas Well
- or ● Abandoned Oil Well
- or ○ Input Well



Remarks: \_\_\_\_\_  
 \_\_\_\_\_  
 \_\_\_\_\_  
 Submitted by N \_\_\_\_\_ Approved by \_\_\_\_\_  
 Civil Engineer Division Manager  
 Approved by \_\_\_\_\_  
 Vice-President - General Manager

THE ROCK OIL COMPANY

COMPLETION RECORD OF WELLS DRILLED BY OTHER OPERATORS

TCD

Michigan Producing Division

Date April 23, 1943 No. 120  
 State Mich. County Missaukee District Aetna Twp. 22 N Rge. 6 W  
 (Serial No.)  
 Well No. 2 (County No.) 120 Farm A. Buning Acres \_\_\_\_\_  
 Operator Gulf Refining Company Information secured ~~from~~ Scouting Department By \_\_\_\_\_  
 Date well started 2-16-43 Date well completed 4-20-43 Elevation 1185.2

PRODUCTION RECORD

1st 24 hours natural 110 bbls. oil plus 7 bbls. salt water.  
 2nd 24 hours natural \_\_\_\_\_  
 Date of shot \_\_\_\_\_ No. of quarts \_\_\_\_\_ From \_\_\_\_\_ to \_\_\_\_\_ From \_\_\_\_\_ to \_\_\_\_\_  
 Date of acid \_\_\_\_\_ No. of gallons \_\_\_\_\_  
 1st 24 hours after acid shot \_\_\_\_\_  
 2nd 24 hours after acid shot \_\_\_\_\_

FORMATION AND CASING RECORD

Formation	Top	Bottom	Top Pay	Bottom Pay	Remarks	Casing	
						Size	Set at
Brown Dolomite	1108				See remarks below.	14"	408
Mich. Stray	1266				" " "	8-1/4"	1550
Traverse Lime	3175	S.L.M.			" " "	5-3/16"	3848
Dundee	3847	"	3848	3851	Show salt water at 3851.		
Total Depth		3851					

Remarks Cored from 1270 to 1295 - 1 million cu. ft. sulphur gas from 1270 to 1279 - oil saturation from 1279 to 1284. Cored from 3212 to 3218 - trace of oil and bleeding salt water.

3853' GCM equals 3848' SLM.

Signed D. C. Shackelford