



Western Michigan University
ScholarWorks at WMU

Legacy Scout Tickets from Pure Oil Company

8-20-2021

**MGRRE_PureOilScoutTickets_Herweyer,
John_1_21113100320000**

MGRRE
Western Michigan University

Follow this and additional works at: <https://scholarworks.wmich.edu/pure>



Part of the Geology Commons

WMU ScholarWorks Citation

MGRRE, "MGRRE_PureOilScoutTickets_Herweyer, John_1_21113100320000" (2021). *Legacy Scout Tickets from Pure Oil Company*. 5928.
<https://scholarworks.wmich.edu/pure/5928>

This Document is brought to you for free and open access via ScholarWorks at WMU. It has been accepted for inclusion in Legacy Scout Tickets from Pure Oil Company by an authorized administrator of ScholarWorks at WMU. See the National Digital Catalogue - Science Base Catalogue for more collections submitted by MGRRE.



MGRRE_PureOilScoutTickets_Herweyer, John_1_21113100320000

API 21113100320000

Permit Number 10032

Lease Name Herweyer, John

Well Number 1

County Missaukee

Township 22N

Range 06W

Section 26

2021 DEQ or Pure co_name Smith Petroleum Company

Pure Number 123

Latitude 44.26864

Longitude -85.01063

THE PURE OIL COMPANY LOCATION REPORT

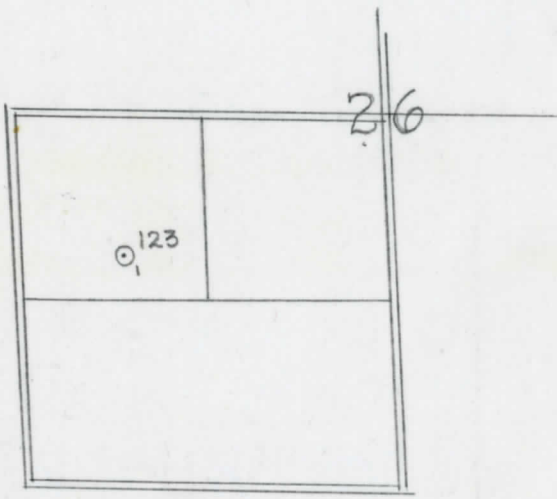
Date March 31, 1943 A.F.E. No. _____
 Division Mich. Producing District _____ Lease John Herweyer
John Herweyer
 Acres _____ Lease No. _____ Elevation _____ Well No. 1 (Serial No. 123*)
 Quadrangle C 1/2 NW-SW Sec. 26 Twp. 22 N Rge. 6 W ~~XXX~~ ~~XXX~~ Aetna
C 1/2 NW SW Sec. 26 Twp. 22 N Rge. 6 W Twp. Aetna
 Survey _____ County Missaukee State Michigan
 Operator Smith Pet Co. Map Aetna Twp - Missaukee
Smith Petroleum Company Aetna Township, Missaukee County

_____	_____	Feet from North Line of Lease
_____	_____	" " East " " "
<u>330</u>	<u>330</u>	" " South " " "
<u>750</u>	<u>750</u>	" " West " " "
<u>990</u>	<u>990</u>	Feet from North Line of Section
_____	_____	" " East " " "
_____	_____	" " South " " "
<u>750</u>	<u>750</u>	" " West " " "

miw

LEGEND

- Location
- ☉ Gas Well
- Oil Well
- ☉ Gas - Distillate Well
- ∅ or ○ Dry Hole
- Dry Showing Oil
- ☉ Dry Showing Gas
- ⊗ Abandoned Location
- ☉ or ⊗ Abandoned Gas Well
- or ● Abandoned Oil Well
- or ○ Input Well



Remarks: _____

Scale _____

Submitted by RN Civil Engineer Approved by _____ Division Manager
 Approved by _____ Vice-President - General Manager

THE PURE OIL COMPANY

The Pure Oil Company

COMPLETION RECORD OF WELLS DRILLED BY OTHER OPERATORS

Michigan Producing Division

720

Date May 5, 1943 No. 123

State Mich. County Missaukee Twp. Aetna Sec. 26 Twp. 22 N Rge. 6 W

Well No. 1 (Serial No.) 123 Farm John Herweyer Acres

Operator Smith Petroleum Company Information secured By Scouting Department

Date well started 4-8-43 Date well completed 5-4-43 Elevation 1189.6

PRODUCTION RECORD

1st 24 hours natural Dry Hole

2nd 24 hours natural

Date of shot No. of quarts From to From to

Date of acid No. of gallons

1st 24 hours after acid shot

2nd 24 hours after acid shot

FORMATION AND CASING RECORD

Table with columns: Formation, Top, Bottom, Top Pay, Bottom Pay, Remarks, Casing Size, Casing Set at. Rows include Stray, Marshall, Traverse Form., Traverse Lime, Dundee, and Total Depth.

Remarks 3827' CTM equals 3827' SLM.

Signed D. C. Shackelford