



Western Michigan University  
ScholarWorks at WMU

---

Legacy Scout Tickets from Pure Oil Company

---

8-20-2021

**MGRRE\_PureOilScoutTickets\_State Aetna\_A-1\_21113100690000**

MGRRE

*Western Michigan University*

Follow this and additional works at: <https://scholarworks.wmich.edu/pure>



Part of the Geology Commons

---

#### **WMU ScholarWorks Citation**

MGRRE, "MGRRE\_PureOilScoutTickets\_State Aetna\_A-1\_21113100690000" (2021). *Legacy Scout Tickets from Pure Oil Company*. 5932.

<https://scholarworks.wmich.edu/pure/5932>

This Document is brought to you for free and open access via ScholarWorks at WMU. It has been accepted for inclusion in Legacy Scout Tickets from Pure Oil Company by an authorized administrator of ScholarWorks at WMU. See the National Digital Catalogue - Science Base Catalogue for more collections submitted by MGRRE.



---

**MGRRE\_PureOilScoutTickets\_State Aetna\_A-1\_21113100690000**

API 21113100690000

Permit Number 10069

Lease Name State Aetna

Well Number A-1

County Missaukee

Township 22N

Range 06W

Section 23

2021 DEQ or Pure co\_name Maguire, C. L., Incorporated

Pure Number 127

Latitude 44.28311

Longitude -85.01121

THE PURE OIL COMPANY  
LOCATION REPORT

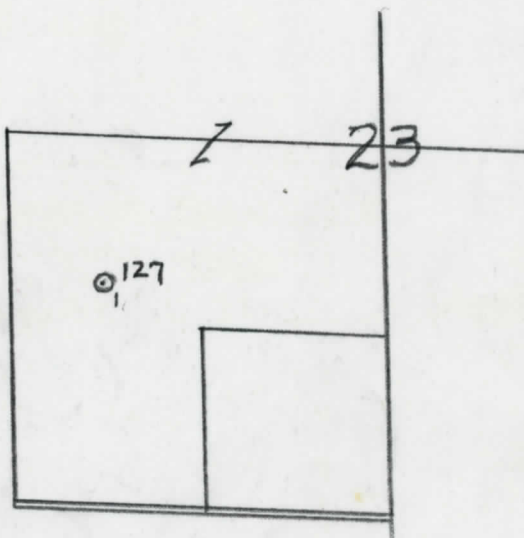
Date April 21, 1943 A.F.E. No. \_\_\_\_\_  
 Division Mich. Producing District \_\_\_\_\_ Lease State-Aetna "A"  
State-Aetna "A"  
 Acres \_\_\_\_\_ Lease No. \_\_\_\_\_ Elevation \_\_\_\_\_ Well No. 1 (Serial No. 127\*)  
 Quadrangle C S<sub>1</sub>/<sub>2</sub> NW SW Sec. 23 Twp. 22 N Rge. 6 W Dist. Aetna  
 Survey \_\_\_\_\_ County Missaukee State Michigan  
 Operator C. L. Maguire, Inc. Map Aetna Twp - Missaukee Co  
C. L. Maguire, Inc. Aetna Township, Missaukee County

		Feet from North Line of Lease
	" "	East " "
<u>330</u>	<u>330</u>	" " South " "
<u>660</u>	<u>660</u>	" " West " <u>1/4</u> "
<u>990</u>	<u>990</u>	Feet from North Line of Section
	" "	East " "
	" "	South " "
<u>660</u>	<u>660</u>	" " West " "

*map*

LEGEND

- Location
- ☉ Gas Well
- Oil Well
- ☼ Gas - Distillate Well
- or ○ Dry Hole
- or ● Dry Showing Oil
- ☉ Dry Showing Gas
- ⊗ Abandoned Location
- ☼ or ☼ Abandoned Gas Well
- or ● Abandoned Oil Well
- or ○ Input Well



Remarks: \_\_\_\_\_ Scale \_\_\_\_\_

Submitted by RN Civil Engineer Approved by \_\_\_\_\_ Division Manager  
 Approved by \_\_\_\_\_ Vice-President - General Manager

THE PURE OIL COMPANY

COMPLETION RECORD OF WELLS DRILLED BY OTHER OPERATORS

Michigan Producing Division

760

Date June 9, 1943 No. 127  
 State Mich. County Missaukee District Aetna Twp. 23 Sec. 23 Twp. 22 N Rge. 6 W  
 Well No. 1 (Serial No.) 127 Farm State-Aetna Acres \_\_\_\_\_  
 Operator G. L. Maguire, Inc. Information secured from Scouting Department  
 Date well started 4-4-43 Date well completed 5-31-43 Elevation 1279.9

PRODUCTION RECORD

1st 24 hours natural Dry Hole  
 2nd 24 hours natural \_\_\_\_\_  
 Date of shot \_\_\_\_\_ No. of quarts \_\_\_\_\_ From \_\_\_\_\_ to \_\_\_\_\_ From \_\_\_\_\_ to \_\_\_\_\_  
 Date of acid \_\_\_\_\_ No. of gallons \_\_\_\_\_  
 1st 24 hours after acid shot \_\_\_\_\_  
 2nd 24 hours after acid shot \_\_\_\_\_

FORMATION AND CASING RECORD

Formation	Top	Bottom	Top Pay	Bottom Pay	Remarks	Casing	
						Size	Set at
Brown Dolomite	1167					10"	48
Stray	1343					6-5/8"	1655
Marshall		1607				5-3/16"	3954
Antrim	2543	3258					
Traverse Lime	3295	S.L.M.			Show S.W. at 3400'. H.F.B.S.W. 3615-3623.		
Dundee	3955				850 ft. oil and 2400 ft. salt water in 12 1/2 hrs. from 3956 to 3960.		
Total Depth		3960					

Remarks 1430' DSM equals 1439' SLM.

Signed D. C. Shackelford