



Western Michigan University
ScholarWorks at WMU

Legacy Scout Tickets from Pure Oil Company

8-20-2021

MGRRE_PureOilScoutTickets_State & Apps_1_21113101570000

MGRRE

Western Michigan University

Follow this and additional works at: <https://scholarworks.wmich.edu/pure>



Part of the Geology Commons

WMU ScholarWorks Citation

MGRRE, "MGRRE_PureOilScoutTickets_State & Apps_1_21113101570000" (2021). *Legacy Scout Tickets from Pure Oil Company*. 5940.

<https://scholarworks.wmich.edu/pure/5940>

This Document is brought to you for free and open access via ScholarWorks at WMU. It has been accepted for inclusion in Legacy Scout Tickets from Pure Oil Company by an authorized administrator of ScholarWorks at WMU. See the National Digital Catalogue - Science Base Catalogue for more collections submitted by MGRRE.



MGRRE_PureOilScoutTickets_State & Apps_1_21113101570000

API 21113101570000

Permit Number 10157

Lease Name State & Apps

Well Number 1

County Missaukee

Township 22N

Range 06W

Section 26

2021 DEQ or Pure co_name McClanahan Oil Company

Pure Number 135

Latitude 44.27571

Longitude -85.00104

THE PURE OIL COMPANY

LOCATION REPORT

Date June 17, 1943 A.F.E. No. _____

Division Michigan Producing District _____ Lease State-Apps - APPS

Acres _____ Lease No. _____ Elevation _____ Well No. 1 (Serial No. 1335)

Quadrangle C S 1/2 NW NE Sec. 26 Twp. 22 N Rge. 6 W Twp. Aetna

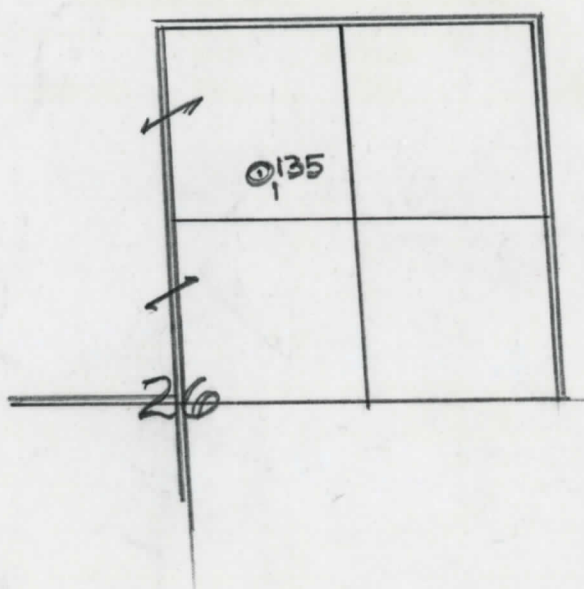
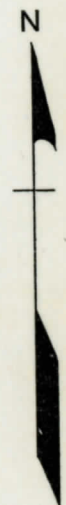
Survey _____ County Missaukee State Michigan

Operator McClanahan Oil Co Map Aetna Twp - Missaukee Co

_____	_____	Feet from North Line of Lease
<u>660</u>	<u>660</u>	" " East " " "
<u>330</u>	<u>330</u>	" " South " " "
<u>660</u>	<u>660</u>	" " West " <u>1/4</u> "
<u>990</u>	<u>990</u>	Feet from North Line of Section
_____	_____	" " East " " "
_____	_____	" " South " " "
<u>660</u>	<u>660</u>	" " West " " "

C

- LEGEND
- Location
 - ☀ Gas Well
 - Oil Well
 - ☀ Gas - Distillate Well
 - or ○ Dry Hole
 - Dry Showing Oil
 - ☀ Dry Showing Gas
 - ⊗ Abandoned Location
 - ☀ or ☀ Abandoned Gas Well
 - or ● Abandoned Oil Well
 - or ○ Input Well



Scale _____

Remarks: _____

Submitted by RN Civil Engineer Approved by _____ Division Manager

Approved by _____ Vice-President - General Manager

Date September 1, 1943

LOCATION BEBOVI

23750-Vbba
STATE - 4662

A'E'E' NO'

COMPLETION RECORD OF WELLS DRILLED BY OTHER OPERATORS

Michigan Producing Division

XCD

Date September 1, 1943 No. 135

State Mich. County Missaukee ~~District~~ Aetna Sec. 26 Twp. 22 N Rge. 6 W
(Serial No.)

Well No. 1 (County No.) 135 Farm State-Apps Acres

Operator McClanahan Oil Company Information secured ~~from~~ By Scouting Department

Date well started 6-27-43 Date well completed 8-28-43 Elevation 1189.8

PRODUCTION RECORD

Dry Hole

1st 24 hours natural

2nd 24 hours natural

Date of shot No. of quarts From to From to

Date of acid No. of gallons

1st 24 hours after acid shot

2nd 24 hours after acid shot

FORMATION AND CASING RECORD

Formation	Top	Bottom	Top Pay	Bottom Pay	Remarks	Casing	
						Size	Set at
Brown Dolomite	1105					10"	605
Mich. Stray	1263					6-5/8"	1560
Antrim	2437	3156	SOM.			5-3/16"	3850
Traverse Lime	3174	SLM.			Show gas and hole full water 3181 to 3186.		
Dundee	3860	SLM			1200 ft. water from 3868 to 3870.		
Total Depth		3870					

Remarks 1893' CTM equals 1897' SLM.; 3150' CTM equals 3146' SOM; 3190' CTM equals 3196' SLM; 3805' CTM equals 3807' SLM/

Signed D. C. Shackelford