



Western Michigan University
ScholarWorks at WMU

Legacy Scout Tickets from Pure Oil Company

8-20-2021

MGRRE_PureOilScoutTickets_Allen Estate_1_21113103540000

MGRRE

Western Michigan University

Follow this and additional works at: <https://scholarworks.wmich.edu/pure>



Part of the Geology Commons

WMU ScholarWorks Citation

MGRRE, "MGRRE_PureOilScoutTickets_Allen Estate_1_21113103540000" (2021). *Legacy Scout Tickets from Pure Oil Company*. 5945.

<https://scholarworks.wmich.edu/pure/5945>

This Document is brought to you for free and open access via ScholarWorks at WMU. It has been accepted for inclusion in Legacy Scout Tickets from Pure Oil Company by an authorized administrator of ScholarWorks at WMU. See the National Digital Catalogue - Science Base Catalogue for more collections submitted by MGRRE.



MGRRE_PureOilScoutTickets_Allen Estate_1_21113103540000

API 21113103540000

Permit Number 10354

Lease Name Allen Estate

Well Number 1

County Missaukee

Township 23N

Range 06W

Section 19

2021 DEQ or Pure co_name Freeman Oil Company

Pure Number 140

Latitude 44.36732

Longitude -85.07717

THE PURE OIL COMPANY
LOCATION REPORT

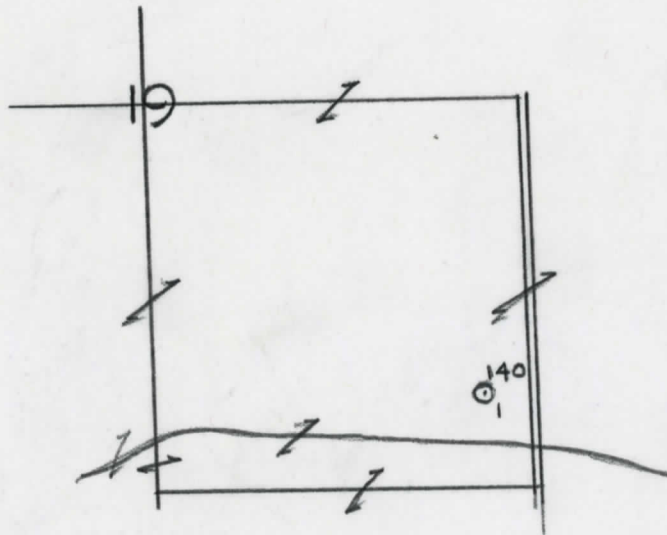
Date September 15, 1943 A.F.E. No. _____
 Division Michigan Producing District _____ Lease Allen Estate
 Acres _____ Lease No. _____ Elevation _____ Well No. 1 (Serial No. 140)
 Quadrangle C E 1/2 SE - SE Sec. 19 Twp. 23 N Rge. 6 W Twp. West Branch
 Survey _____ County Missaukee State Michigan
 Operator Freeman Oil Co Map West Branch Twp. Missaukee
Freeman Oil Company West Branch Township, Missaukee County

Feet from North Line of Lease
330 330 " " East " " "
660 660 " " South " " "
 " " West " " "

Feet from North Line of Section
330 330 " " East " " 1/4
660 660 " " South " " "
 " " West " " "

LEGEND

- Location
- ☀ Gas Well
- Oil Well
- ☀ Gas - Distillate Well
- or ○ Dry Hole
- Dry Showing Oil
- ☀ Dry Showing Gas
- ⊙ Abandoned Location
- ☀ or ☀ Abandoned Gas Well
- or ● Abandoned Oil Well
- or ○ Input Well



Scale _____

Remarks: _____

Submitted by RN Civil Engineer Approved by _____ Division Manager
 Approved by _____ Vice-President - General Manager

Michigan Producing Division

Date November 24, 1943 No. 140
 State Mich. County Missaukee Twp. West Branch Sec. 19 Twp. 23 N Rge. 6 W
 (Serial No.)
 Well No. 1 (County Code) 140 Farm Allen Estate Acres _____
 Operator Freeman Oil Company Information secured from Scouting Department By _____
 Date well started 9-13-43 Date well completed 11-21-43 Elevation 1176.5

PRODUCTION BOARD

1st 24 hours natural Dry Hole
 2nd 24 hours natural _____
 Date of shot _____ No. of quarts _____ From _____ to _____ From _____ to _____
 Date of acid _____ No. of gallons _____
 shot
 1st 24 hours after acid _____
 shot
 2nd 24 hours after acid _____

FORMATION AND CASING RECORD

Formation	Top	Bottom	Top Pay	Bottom Pay	Remarks	Casing	
						Size	Set at
Brown Dolomite	930	950			Flo. water 627-635.	10"	537
Mich. Stray	1090	CTM				8-1/4"	844
Marshall	1200	"				6-5/8"	1400
Red Rock		1345				5-3/16"	3712
Sunbury	2226						
Antrim	2770						
Traverse Form.	2990	CTM					
Traverse Lime	3030	SOM			Odor oil 3040-3049. H.F.W. 3130.		
Dundee	3710	SLM			500 ft. water in one hr. 3800-3812.		
Total Depth		3812					

Remarks 3727' CTM equals 3712' SLM.

Signed D. C. Shackelford