



Legacy Scout Tickets from Pure Oil Company

8-20-2021

**MGRRE_PureOilScoutTickets_Horner, Frank S,
Tr_9_21113106810000**

MGRRE
Western Michigan University

Follow this and additional works at: <https://scholarworks.wmich.edu/pure>



Part of the Geology Commons

WMU ScholarWorks Citation

MGRRE, "MGRRE_PureOilScoutTickets_Horner, Frank S, Tr_9_21113106810000" (2021). *Legacy Scout Tickets from Pure Oil Company*. 5950.
<https://scholarworks.wmich.edu/pure/5950>

This Document is brought to you for free and open access via ScholarWorks at WMU. It has been accepted for inclusion in Legacy Scout Tickets from Pure Oil Company by an authorized administrator of ScholarWorks at WMU. See the National Digital Catalogue - Science Base Catalogue for more collections submitted by MGRRE.



MGRRE_PureOilScoutTickets_Horner, Frank S, Tr_9_21113106810000

API 21113106810000

Permit Number 10681

Lease Name Horner, Frank S, Tr

Well Number 9

County Missaukee

Township 24N

Range 05W

Section 12

2021 DEQ or Pure co_name Merit Energy Company

Pure Number 145

Latitude 44.4856643

Longitude -84.8707832

THE PURE OIL COMPANY

LOCATION REPORT

Date March 22, 1944

A.F.E. No. _____

Division Mich. Producing District _____

Lease Frank S. Horner, Tr.
Frank S. Horner, Tr.

Acres _____ Lease No. _____ Elevation _____ Well No. 9 (Serial No. 145)

Quadrangle C S $\frac{1}{2}$ NW SW Sec. 12 Twp. 24 N Rge. 5 W Twp. Norwich

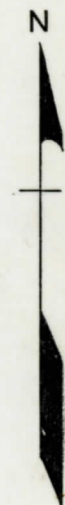
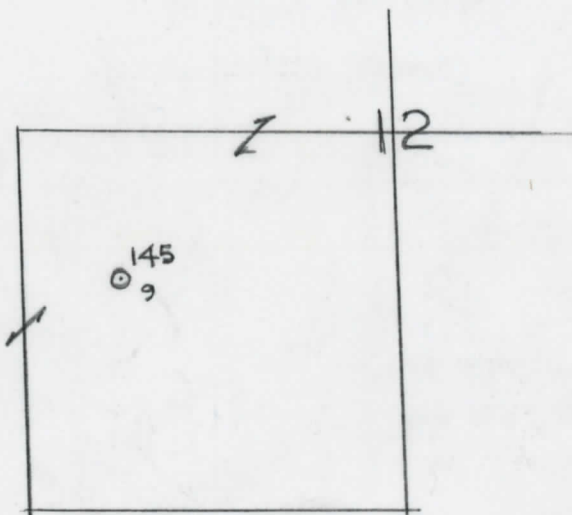
Survey _____ County Missaukee State Michigan

Operator Sun Oil Co Map Norwich Twp. Missaukee Co
Sun Oil Company Norwich Township, Missaukee County

<u>3630</u>	<u>3630</u>	Feet from North Line of Lease
<u>4620</u>	<u>4620</u>	" " East " " "
		" " South " " "
		" " West " " "
<u>990</u>	<u>990</u>	Feet from North Line of Section <u>1/4</u>
		" " East " " "
		" " South " " "
<u>660</u>	<u>660</u>	" " West " " "

LEGEND

- Location
- ☀ Gas Well
- Oil Well
- ☀ Gas-Distillate Well
- ∅ or ○ Dry Hole
- Dry Showing Oil
- ☀ Dry Showing Gas
- ⊗ Abandoned Location
- ☀ or ☀ Abandoned Gas Well
- or ● Abandoned Oil Well
- ⊗ or ⊗ Input Well



Remarks: _____

Scale _____

Submitted by RN _____
Civil Engineer

Approved by _____
Division Manager

Approved by _____
Vice-President - General Manager

COMPLETION RECORD OF WELLS DRILLED BY OTHER OPERATORS

Michigan Producing Division

Date June 21, 1944 No. 145
 State Mich. County Missaukee Twp. Norwich Sec. 12 Twp. 24 N Rge. 5 W
 Well No. 9 (Serial No.) 145 Farm F. S. Homer, Tr. Acres _____
 Operator Sun Oil Company Information secured Scouting Department
 Date well started 4-14-44 Date well completed 5-28-44 Elevation 1233.9

PRODUCTION BOARD

1st 24 hours natural 10 Barrels (Swabbed)
 2nd 24 hours natural _____
 Date of shot 6-7-44 and No. of quarts _____ From _____ to _____
 Date of acid 6-9-44 No. of gallons 5500
 1st 19 hours after acid 95 Barrels (Flowed)
 Next 12 hours after acid 40 Barrels (Flowed)

FORMATION AND CASING RECORD

Formation	Top	Bottom	Top Pay	Bottom Pay	Remarks	Casing	
						Size	Set at
Marshall	612 (L-3122)					8-5/8"	526
Traverse Lime	2593 (L-3157)	SLM				5-3/16"	4468
Dundee	3075 (L-3141)	SLM			See remarks below.		
					Odor oil 4346-4350. (L-3112)		
					Show " 4362-4367 (L-3124)		
			4423 (L-3189)	4426			
			(From time log)		Show oil 4453-4455. (L-3219)		
					Sho O.&G. 4481-4483 (L-3247)		
					" " 4500. (L-3260)		
Total Depth		4594 (L-3360)					

Remarks Drill stem test 3128-3165 open 45 min. rec. 800 ft. mud & 1200 ft. salt water - porosity from drlg. time 3147-3148. Plugged back to 4506' -perf. 4448-4460 w/24 shots-no shows; 4417-4431 w/29 shots rec. small show oil and gas; 4345-4372 w/66 shots rec. show oil at 4366 and increased gas. Bottom hole pressure (shut in) 2235 lbs.

2332' eq. 2332' SLM; 4176' eq. 4180' SLM; 4309' eq. 4308' SLM; 4488' eq. 4488' SLM.

Signed D. C. Shackelford