



Western Michigan University
ScholarWorks at WMU

Legacy Scout Tickets from Pure Oil Company

8-20-2021

MGRRE_PureOilScoutTickets_Fahrney, Wm H Estate_1_21113108050000

MGRRE

Western Michigan University

Follow this and additional works at: <https://scholarworks.wmich.edu/pure>



Part of the Geology Commons

WMU ScholarWorks Citation

MGRRE, "MGRRE_PureOilScoutTickets_Fahrney, Wm H Estate_1_21113108050000" (2021). *Legacy Scout Tickets from Pure Oil Company*. 5955.

<https://scholarworks.wmich.edu/pure/5955>

This Document is brought to you for free and open access via ScholarWorks at WMU. It has been accepted for inclusion in Legacy Scout Tickets from Pure Oil Company by an authorized administrator of ScholarWorks at WMU. See the National Digital Catalogue - Science Base Catalogue for more collections submitted by MGRRE.



MGRRE_PureOilScoutTickets_Fahrney, Wm H Estate_1_21113108050000

API 21113108050000

Permit Number 10805

Lease Name Fahrney, Wm H Estate

Well Number 1

County Missaukee

Township 24N

Range 05W

Section 12

2021 DEQ or Pure co_name Merit Energy Company

Pure Number 153

Latitude 44.4887677

Longitude -84.8600841

THE PURE OIL COMPANY

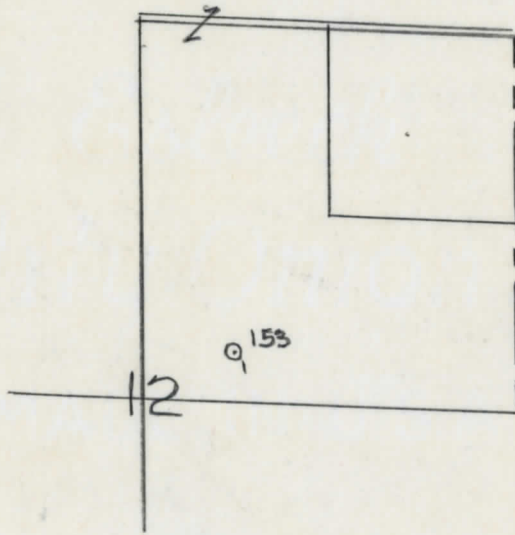
LOCATION REPORT

Date June 1, 1944 A.F.E. No. _____
 Division Mich. Producing District _____ Lease Wm. H. Fahrney Est
Wm. H. Fahrney Est
 Acres _____ Lease No. _____ Elevation _____ Well No. 1 (Serial No. 153)
 Quadrangle C S 1/2 SW NE Sec. 12 Twp. 24 N Rge. 5 W ~~XXX~~ ~~XXX~~ Norwich
 Survey _____ County Missaukee State Michigan
 Operator Sun Oil Co Sun Oil Company Map Norwich Twp - Missaukee Co
Norwich Township, Missaukee County

_____	Feet from North Line of Lease
_____	" " East " " "
<u>330</u>	<u>330</u> " " South " " "
<u>660</u>	<u>660</u> " " West " " "
_____	Feet from North Line of Section
_____	" " East " " "
<u>330</u>	<u>330</u> " " South " <u>1/4</u> "
<u>660</u>	<u>660</u> " " West " " "

LEGEND

- Location
- ☉ Gas Well
- Oil Well
- ☼ Gas - Distillate Well
- ∅ or ○ Dry Hole
- or ○ Dry Showing Oil
- ☉ Dry Showing Gas
- ⊗ Abandoned Location
- ☼ or ☼ Abandoned Gas Well
- or ● Abandoned Oil Well
- ⊗ or ⊗ Input Well



Remarks: _____

Submitted by RN Civil Engineer Approved by _____ Division Manager
 Approved by _____ Vice-President - General Manager

COMPLETION RECORD OF WELLS DRILLED BY OTHER OPERATORS

Michigan Producing Division

Date August 9, 1944 No. 153
 State Mich. County Missaukee ~~Dickens~~ Twp. Norwich Sec. 12 Twp. 24 N Rge. 5 W
 Well No. 1 (County) 153 Farm Wm. H. Fahrney Est. Acres
 Operator Sun Oil Company Information secured ~~from~~ Scouting Department By
 Date well started 6-24-44 Date well completed 7-23-44 Elevation 1231.3

PRODUCTION BOARD

1st 24 hours natural Unknown
 2nd 24 hours natural
 Date of shot No. of quarts From to From to
 Date of acid 7-29-44 and 7-31-44 No. of gallons 6000
 1st 24 hours after acid ~~xbook~~ 194 Barrels (Flowed)
 2nd 24 hours after acid ~~xbook~~ 130 Barrels (Flowed)

FORMATION AND CASING RECORD

Formation	Top	Bottom	Top Pay	Bottom Pay	Remarks	Casing	
						Size	Set at
Marshall	602	(7629)				12-3/4"	44
Traverse Lime (Squaw Bay)	2369	SLM	(7158)			8-5/8"	811
Dundee	3073	(1842) SLM	4338	(3107) 4350		5-3/16"	4508
Total Depth		4512	(3211)				

Remarks Perforated 4326-4356 with 85 shots - show oil 4338-4350; perf. 4466-4486 with 48 shots - first gas at 4472. (3241)
Production 8-5-44 - 108 to 113 bbls. per day.

Signed D. C. Shackelford