



Western Michigan University
ScholarWorks at WMU

Legacy Scout Tickets from Pure Oil Company

8-20-2021

MGRRE_PureOilScoutTickets_Fahrney, Wm H Estate_2_21113108060000

MGRRE

Western Michigan University

Follow this and additional works at: <https://scholarworks.wmich.edu/pure>



Part of the Geology Commons

WMU ScholarWorks Citation

MGRRE, "MGRRE_PureOilScoutTickets_Fahrney, Wm H Estate_2_21113108060000" (2021). *Legacy Scout Tickets from Pure Oil Company*. 5956.

<https://scholarworks.wmich.edu/pure/5956>

This Document is brought to you for free and open access via ScholarWorks at WMU. It has been accepted for inclusion in Legacy Scout Tickets from Pure Oil Company by an authorized administrator of ScholarWorks at WMU. See the National Digital Catalogue - Science Base Catalogue for more collections submitted by MGRRE.



MGRRE_PureOilScoutTickets_Fahrney, Wm H Estate_2_21113108060000

API 21113108060000

Permit Number 10806

Lease Name Fahrney, Wm H Estate

Well Number 2

County Missaukee

Township 24N

Range 05W

Section 12

2021 DEQ or Pure co_name Merit Energy Company

Pure Number 154

Latitude 44.4926684

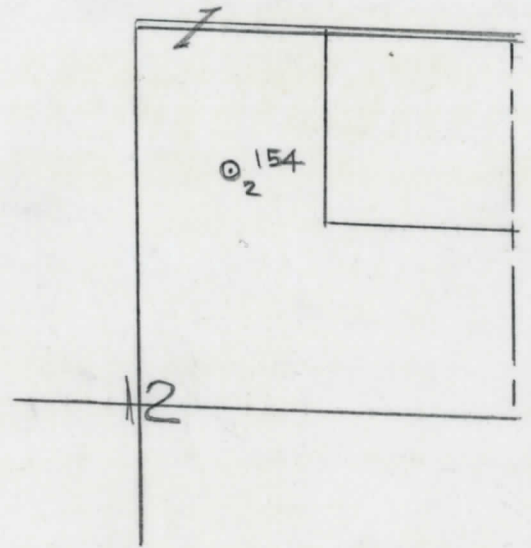
Longitude -84.860319

THE PURE OIL COMPANY
LOCATION REPORT

Date June 1, 1944 A.F.E. No. _____
 Division Mich. Producing District _____ Lease Wm. H. Fahrney Est
 Acres _____ Lease No. _____ Elevation _____ Well No. 2 (Serial No. 154)
 Quadrangle C S₂ NW NE Sec. 12 Twp. 24 N Rge. 5 W ~~XBRN~~ ~~XBRN~~ Twp. Norwich
 Survey _____ County Missaukee State Michigan
 Operator Sun Oil Co Map Norwich Twp - Missaukee Co
Sun Oil Company

		Feet from North Line of Lease
	" "	East " " "
<u>1650</u>	<u>1650</u>	" " South " " "
<u>660</u>	<u>660</u>	" " West " " "
<u>990</u>	<u>990</u>	Feet from North Line of Section <u>1/4</u>
	" "	East " " "
	" "	South " " "
<u>660</u>	<u>660</u>	" " West " " "

- LEGEND
- Location
 - ☀ Gas Well
 - Oil Well
 - ☀ Gas - Distillate Well
 - ∅ or ○ Dry Hole
 - Dry Showing Oil
 - ☀ Dry Showing Gas
 - ⊗ Abandoned Location
 - ☀ or ☀ Abandoned Gas Well
 - or ● Abandoned Oil Well
 - or ○ Input Well



Remarks: _____ Scale _____

Submitted by RN Civil Engineer Approved by _____ Division Manager
 Approved by _____ Vice-President - General Manager

COMPLETION RECORD OF WELLS DRILLED BY OTHER OPERATORS

Michigan Producing Division

Date September 7, 1944 No. 154
 State Mich. County Missaukee Dist. xxxx
 (Serial No.) Twp. Norwich Sec. 12 Twp. 24 N Rge. 5 W
 Well No. 2 (County No.) 154 Farm Wm. H. Fahrney Est. Acres _____
 Operator Sun Oil Company Information secured from Scouting Department
 Date well started 6-22-44 Date well completed 7-23-44 Elevation 1227.5

PRODUCTION BOARD

1st 24 hours natural

2nd 24 hours natural

Date of shot _____ No. of quarts _____ From _____ to _____ From _____ to _____
 Date of acid 8-11-44 and 8-14-44 No. of gallons 1000 at 4504.
 shot xxxx 2000
 1st 24 hours after acid Flowed 120 Barrels first acid.
 shot xxxx
 2nd 24 hours after acid Pumping 85 bbls. per day after second acid treatment.

FORMATION AND CASING RECORD

Formation	Top	Bottom	Top Pay	Bottom Pay	Remarks	Casing	
						Size	Set at
Marshall	607 ⁽⁻¹⁶¹⁾	SIM				12-3/4	37
Traverse Line	2398 ⁽⁻¹¹⁷⁰⁾	"				8-1/4"	803
Dundee	3088 ⁽⁻¹⁸⁶²⁾	"				5-3/16"	4507
Cored:	4298	4316	Rec.	17 1/2 ft.			
"	4316	4334	"	18 ft.	Fair pay 4321-4322 1/2; poor pay 4332-4333. ⁽⁻³⁰⁹²⁾		
"	4334	4346	"	10 ft.	Poor pay 4336-4337 1/2; Fair " 4338 1/2-4339-3/4. ⁽⁻³¹⁰⁶⁾		
"	4346	4364	"	16 ft.	Good pay 4350 to 4351; 4353-4357 1/2. ⁽⁻³¹²²⁾ ⁽⁻³¹²⁵⁾		
"	4364	4382	"	17 1/2 ft.	Fair Pay 4372-4373 1/2. ⁽⁻³¹⁴⁴⁾		
					Show salt water 4372-4373 1/2 - salt water 4381 1/2. ^(-3153 1/2)		
Total Depth		4510 ⁽⁻³²⁸⁷⁾					
Cleaned out:		4504 ⁽⁻³²⁷⁴⁾					
Plugged back total depth 4366 9-16-48 D.R.L.							

Remarks Perforated 25 shots 4468-4480 rec. show gas; 31 shots 4438-4453 - increase gas; 41 shots 4403-4423 increased gas; 61 shots 4333-4363 showed oil; 17 shots 4318-4326 - no recovery reported.

Signed D. C. Shackelford