



Western Michigan University
ScholarWorks at WMU

Legacy Scout Tickets from Pure Oil Company

8-20-2021

MGRRE_PureOilScoutTickets_Fahrney, Wm H Estate_3_21113108070000

MGRRE

Western Michigan University

Follow this and additional works at: <https://scholarworks.wmich.edu/pure>



Part of the Geology Commons

WMU ScholarWorks Citation

MGRRE, "MGRRE_PureOilScoutTickets_Fahrney, Wm H Estate_3_21113108070000" (2021). *Legacy Scout Tickets from Pure Oil Company*. 5957.

<https://scholarworks.wmich.edu/pure/5957>

This Document is brought to you for free and open access via ScholarWorks at WMU. It has been accepted for inclusion in Legacy Scout Tickets from Pure Oil Company by an authorized administrator of ScholarWorks at WMU. See the National Digital Catalogue - Science Base Catalogue for more collections submitted by MGRRE.



MGRRE_PureOilScoutTickets_Fahrney, Wm H Estate_3_21113108070000

API 21113108070000

Permit Number 10807

Lease Name Fahrney, Wm H Estate

Well Number 3

County Missaukee

Township 24N

Range 05W

Section 1

2021 DEQ or Pure co_name Merit Energy Company

Pure Number 155

Latitude 44.4959875

Longitude -84.8648959

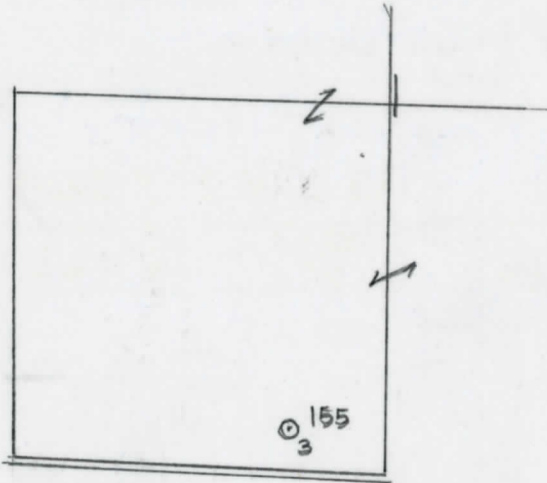
THE PURE OIL COMPANY LOCATION REPORT

Date June 1, 1944 A.F.E. No. _____
 Division Mich. Producing District _____ Lease Wm. H. Fahrney Est.
 Acres _____ Lease No. _____ Elevation _____ Well No. 3 (Serial No. 155)
 Quadrangle C S $\frac{1}{2}$ SE SW Sec. 1 Twp. 24 N Rge. 5 W Twp. Norwich
 Survey _____ County Missaukee State Michigan
 Operator Sun Oil Co Map Norwich Twp. - Missaukee Co
Sun Oil Company Norwich Township, Missaukee County

Feet from North Line of Lease
660 660 " " East " " "
330 330 " " South " " "
 " " West " " "
 Feet from North Line of Section
660 660 " " East " "1/4"
330 330 " " South " " "
 " " West " " "

LEGEND

- Location
- ☀ Gas Well
- Oil Well
- ☀ Gas-Distillate Well
- ⊙ or ○ Dry Hole
- Dry Showing Oil
- ☀ Dry Showing Gas
- ⊙ Abandoned Location
- ☀ or ☀ Abandoned Gas Well
- or ● Abandoned Oil Well
- ⊙ or ○ Input Well



Remarks: _____ Scale _____

Submitted by EN Civil Engineer Approved by _____ Division Manager
 Approved by _____ Vice-President - General Manager

LOCATION REPORT
 THE PURE OIL COMPANY
 COMPLETION RECORD OF WELLS DRILLED BY OTHER OPERATORS

Michigan Producing Division

Date September 20, 1944 No. 155
 State Mich. County Missaukee Twp. Norwich Sec. 1 Twp. 24 N Rge. 5 W
 (Serial No.)
 Well No. 3 (~~XXXXXX~~) 155 Farm Wm. H. Fahrney Est. Acres _____
 Operator Sun Oil Company Information secured ~~XXXX~~ Scouting Department By _____
 Date well started 7-27-44 Date well completed 8-22-44 Elevation 1240.6

PRODUCTION BOARD

1st 24 hours natural ??
 2nd 24 hours natural _____
 Date of shot _____ No. of quarts _____ From _____ to _____ From _____ to _____
 Date of acid 9-10-44 No. of gallons 4000
 1st 24 hours after acid ~~XXXX~~ 403 Barrels (Flowed)
 shot (Now flows 10 barrels per hour)
 2nd 24 hours after acid _____

FORMATION AND CASING RECORD

Formation	Top	Bottom	Top Pay	Bottom Pay	Remarks	Casing	
						Size	Set at
Marshall	637	(+604)			Show oil 645-655.	8-5/8"	814
Traverse Lime	2420	SLM.	(-1179)		(+596)	5-3/16"	4531
Dundee	3114	"	4341	4343	(-3100)		
	(-1873)		4356	4360	(-3115)		
			4375	4379	(-3134)		
			4439	4443	(-3198)		
			4470	4471	(-3229)		
			4474	4475	(-3233)		
			4500	4504	(-3259)		
Total Depth		4535	(-3294)				

Remarks Perforated with 18 shots 4337-4346; 67 shots 4352-4385; 20 shots 4367-4377; 12 shots 4354-4360; 43 shots 4428; 45 shots 4492-4509.
3085' equals 3081' SLM; 3318' equals 3321' SLM; 2423' equals 2420' SLM.

Signed D. C. Shackelford