



Western Michigan University
ScholarWorks at WMU

Legacy Scout Tickets from Pure Oil Company

8-20-2021

**MGRRE_PureOilScoutTickets_Horner, Frank S,
Tr_14_21113109370000**

MGRRE
Western Michigan University

Follow this and additional works at: <https://scholarworks.wmich.edu/pure>



Part of the Geology Commons

WMU ScholarWorks Citation

MGRRE, "MGRRE_PureOilScoutTickets_Horner, Frank S, Tr_14_21113109370000" (2021). *Legacy Scout Tickets from Pure Oil Company*. 5961.
<https://scholarworks.wmich.edu/pure/5961>

This Document is brought to you for free and open access via ScholarWorks at WMU. It has been accepted for inclusion in Legacy Scout Tickets from Pure Oil Company by an authorized administrator of ScholarWorks at WMU. See the National Digital Catalogue - Science Base Catalogue for more collections submitted by MGRRE.



MGRRE_PureOilScoutTickets_Horner, Frank S, Tr_14_21113109370000

API 21113109370000

Permit Number 10937

Lease Name Horner, Frank S, Tr

Well Number 14

County Missaukee

Township 24N

Range 05W

Section 16

2021 DEQ or Pure co_name Merit Energy Company

Pure Number 159

Latitude 44.4665107

Longitude -84.9170691

THE PURE OIL COMPANY

LOCATION REPORT

Date July 26, 1944

A.F.E. No. _____

Division Mich. Producing District _____

Lease Franks Horner Tr.
Frank S. Horner, Tr.

Acres CS 1/2 SE SE Lease No. 16

Elevation _____ Well No. 14 (Serial No. 159)

Quadrangle C S 1/2 SE SE Sec. 16

Twp. 24 N Rge. 5 W Twp. Norwich

Norwich

Survey _____ County Missaukee

State Michigan

Operator Sun Oil Co
Sun Oil Company

Map Norwich Twp - Missaukee Co
Norwich Township, Missaukee County

4950 4950 Feet from North Line of Lease

_____ " " East " " "

_____ " " South " " "

4620 4620 " " West " " "

_____ Feet from North Line of Section

660 660 " " East " 1/4 "

330 330 " " South " " "

_____ " " West " " "

LEGEND

○ Location

☀ Gas Well

● Oil Well

☀ Gas - Distillate Well

○ or ○ Dry Hole

● Dry Showing Oil

☀ Dry Showing Gas

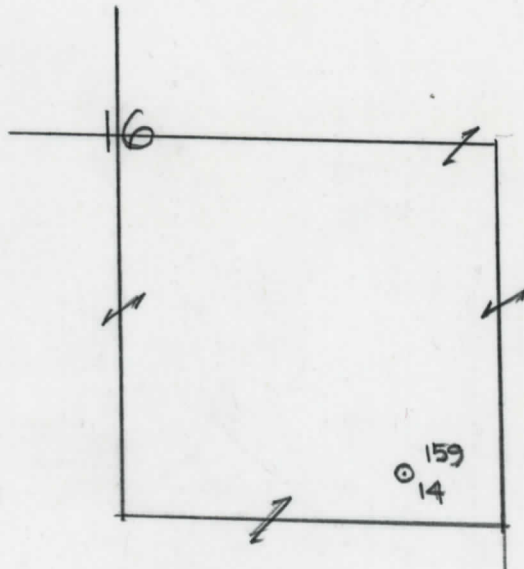
⊗ Abandoned Location

☀ or ⊗ Abandoned Gas Well

● or ● Abandoned Oil Well

⊗ or ⊗ Input Well

Loop



Scale _____

Remarks: _____

Submitted by RN _____
Civil Engineer

Approved by _____
Division Manager

Approved by _____
Vice-President - General Manager

COMPLETION RECORD OF WELLS DRILLED BY OTHER OPERATORS

Michigan Producing Division

Date January 4, 1945 No. 159
 State Mich. County Missaukee ~~Sixt~~ Twp. Norwich Sec. 16 Twp. 24 N Rge. 5 W
 Well No. 14 (Serial No.) ~~(County No.)~~ 159 Farm F. S. Horner, Tr. Acres _____
 Operator Sun Oil Company By _____ Information secured ~~from~~ Scouting Department
 Date well started 8-6-44 Date well completed 12-1-44 Elevation 1173.4

PRODUCTION BOARD

1st 24 hours natural Swabbed 500 ft. Oil and 200 ft. Salt water after perforating.
 2nd 24 hours natural _____
 Date of shot 12-22-44 and No. of quarts _____ From _____ to _____ From _____ to _____
 Date of acid 12-26-44 No. of gallons 3000
 1st 24 hours after acid Flowed 60 Barrels.
 shot _____
 2nd 24 hours after acid _____

FORMATION AND CASING RECORD

Formation	Top	Bottom	Top Pay	Bottom Pay	Remarks	Casing	
						Size	Set at
<u>Marshall</u>	<u>626</u>	<u>(547)</u>				<u>8-5/8"</u>	<u>570</u>
<u>Traverse Lime</u>	<u>2388</u>	<u>SLM</u>	<u>(1215)</u>		<u>Small show gas</u>	<u>5-3/16"</u>	<u>2378 Pulled</u>
				<u>(1219)</u>	<u>2392-2397. 250 ft.</u>	<u>5-3/16"</u>	<u>4447</u>
					<u>S.W. at 2397. (1224)</u>		
<u>Dundee</u>	<u>3081</u>	<u>SLM.</u>	<u>(1908)</u>				
<u>Cored:</u>	<u>3068</u>	<u>3081</u>	<u>Rec. 13 ft.</u>				
<u>"</u>	<u>3081</u>	<u>3099</u>	<u>" 16 1/2 ft.</u>		<u>P.P. Oil 3081 1/2-3088. (1908 1/2)</u>		
<u>"</u>	<u>3099</u>	<u>3117</u>	<u>Rec. 18 ft.</u>		<u>Strong odor oil 3091 1/2-3099. (1918)</u>		
					<u>Odor oil in cores: 4333-4338; 4341-4352.</u>		
					<u>Show oil 4455-4458. (3282)</u>		
					<u>Salt water 4466-4477. (3293)</u>		
					<u>200 ft. Oil and 800 ft. S.W. in hole at 4485. (3312)</u>		

Total Depth 4501 ~~4458~~ (3328)
 Plugged back: 4458 (3285)
 Lost first hole at 2120'-skidded hole-started second hole 8-14-44. Perf. with 113 shots from 4327-4355; with 56 shots from 4362 to 4417.
 1647' equals 1643' SLM; 2390' eq. 2388' SLM; 2992' eq. 2992' SLM; 4315' eq. 4312' SLM.

Signed D. C. Shackelford