



Western Michigan University
ScholarWorks at WMU

Legacy Scout Tickets from Pure Oil Company

8-20-2021

**MGRRE_PureOilScoutTickets_Horner, Frank
S_16_21113109570000**

MGRRE
Western Michigan University

Follow this and additional works at: <https://scholarworks.wmich.edu/pure>



Part of the Geology Commons

WMU ScholarWorks Citation

MGRRE, "MGRRE_PureOilScoutTickets_Horner, Frank S_16_21113109570000" (2021). *Legacy Scout Tickets from Pure Oil Company*. 5962.
<https://scholarworks.wmich.edu/pure/5962>

This Document is brought to you for free and open access via ScholarWorks at WMU. It has been accepted for inclusion in Legacy Scout Tickets from Pure Oil Company by an authorized administrator of ScholarWorks at WMU. See the National Digital Catalogue - Science Base Catalogue for more collections submitted by MGRRE.



MGRRE_PureOilScoutTickets_Horner, Frank S_16_21113109570000

API 21113109570000

Permit Number 10957

Lease Name Horner, Frank S

Well Number 16

County Missaukee

Township 24N

Range 05W

Section 11

2021 DEQ or Pure co_name Merit Energy Company

Pure Number 160

Latitude 44.4921077

Longitude -84.8743153

THE PURE OIL COMPANY

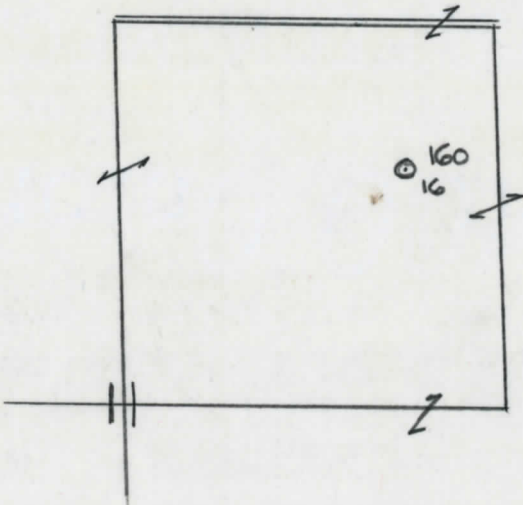
LOCATION REPORT

Date August 9, 1944 A.F.E. No. _____
 Division Mich. Producing District _____ Lease Frank S Horner Tr
Frank S. Horner, Tr.
 Acres _____ Lease No. _____ Elevation _____ Well No. 16 (Serial No. 160)
 Quadrangle C S $\frac{1}{2}$ NE-NE Sec. 11 Twp. 24 N Rge. 5 W ~~NEK~~ ~~DEK~~ Twp. Norwich
 Survey _____ County Missaukee State Michigan
 Operator Sun Oil Co Map Norwich Twp - Missaukee Co
Sun Oil Company Norwich Township, Missaukee County

3630 3630 Feet from North Line of Lease
3300 3300 " " East " " "
 " " South " " "
 " " West " 1/4 "
990 990 Feet from North Line of Section
660 660 " " East " " "
 " " South " " "
 " " West " " "

LEGEND

- Location
- ☀ Gas Well
- Oil Well
- ☀ Gas - Distillate Well
- ∅ or ○ Dry Hole
- Dry Showing Oil
- ☀ Dry Showing Gas
- ⊙ Abandoned Location
- ☀ or ⊙ Abandoned Gas Well
- or ● Abandoned Oil Well
- or ○ Input Well



Remarks: _____

Submitted by RN Civil Engineer Approved by _____ Division Manager
 Approved by _____ Vice-President - General Manager

COMPLETION RECORD OF WELLS DRILLED BY OTHER OPERATORS

Michigan Producing Division

Date October 18, 1944 No. 160
 State Mich. County Missaukee Twp. Norwich Sec. 11 Twp. 24 N Rge. 5 W
 (Serial No.)
 Well No. 16 (County No.) 160 Farm F. S. Horner, Tr. Acres _____
 Operator Sun Oil Co. Information secured By Scouting Department
 Date well started 8-16-44 Date well completed 9-24-44 Elevation 1273.5

PRODUCTION BOARD

1st 24 hours natural None reported
 2nd 24 hours natural _____
 Date of shot 10-8-44 No. of quarts _____ From 1000 to _____ From _____ to _____
 Date of acid 10-9-44 No. of gallons 3000
 1st 24 hours after acid Flow 120 bbls.
 shot
 2nd 24 hours after acid _____
 shot

FORMATION AND CASING RECORD

Formation	Top	Bottom	Top Pay	Bottom Pay	Remarks	Casing	
						Size	Set at
Trav. Lime	2454'	SLM (-1180)				8-5/8"	602'
Dundee	3142'	SLM (-1868)				5-3/16"	4546'
Perforated	4527 1/2'	4540'	26 shots	- dry			
"	4520'	4527'	8 shots	- dry			
"	4500'	4508'	9 shots	- dry			
"	4493'	4499'	20 shots	- show oil and gas	4496' (-3222)		
"	4480'	4483'	15 shots	- no showing			
"	4433'	4464'	32 shots	- increase gas at	4460' (-3186)		
"	4411'	4419'	16 shots	- no showing			
"	4403'	4411'	33 shots	- increase oil and gas	4407 1/2' (-3133 1/2)		
"	4398 1/2'	4403'	9 shots	- no showing			
"	4395'	4408'	4 shots	- no showing			
"	4385'	4394'	19 shots	- question increase gas at	4386' (-3112)		
"	4372'	4380'	7 shots	- no showing			
Total Depth		4550'					
Plugged Back T.D.		4420			Comp 9-2-48		

Remarks 2448 = 51 SLM 10-16-44 Settled production - flow
3100 = 3099 SLM 80 bbls. per day with 611,000 cu. ft.
gas - no salt water.

Signed Dean C. Shackelford