



Western Michigan University
ScholarWorks at WMU

Legacy Scout Tickets from Pure Oil Company

8-20-2021

MGRRE_PureOilScoutTickets_Fahrney, Wm H Estate_4_21113109580000

MGRRE

Western Michigan University

Follow this and additional works at: <https://scholarworks.wmich.edu/pure>



Part of the Geology Commons

WMU ScholarWorks Citation

MGRRE, "MGRRE_PureOilScoutTickets_Fahrney, Wm H Estate_4_21113109580000" (2021). *Legacy Scout Tickets from Pure Oil Company*. 5963.

<https://scholarworks.wmich.edu/pure/5963>

This Document is brought to you for free and open access via ScholarWorks at WMU. It has been accepted for inclusion in Legacy Scout Tickets from Pure Oil Company by an authorized administrator of ScholarWorks at WMU. See the National Digital Catalogue - Science Base Catalogue for more collections submitted by MGRRE.



MGRRE_PureOilScoutTickets_Fahrney, Wm H Estate_4_21113109580000

API 21113109580000

Permit Number 10958

Lease Name Fahrney, Wm H Estate

Well Number 4

County Missaukee

Township 24N

Range 05W

Section 12

2021 DEQ or Pure co_name Merit Energy Company

Pure Number 161

Latitude 44.4884944

Longitude -84.8546945

THE PURE OIL COMPANY

LOCATION REPORT

A.F.E. No.

Date August 9, 1944

Division Mich. Producing

District _____

Lease Wm. H. Fahrney Est.

Wm. H. Fahrney Est

Acres _____ Lease No. _____ Elevation _____ Well No. 4 (Serial No. 161)

Quadrangle C S₂ SE NE Sec. 12 Twp. 24 N Rge. 5 W Twp. Norwich

Survey _____ County Missaukee State Michigan

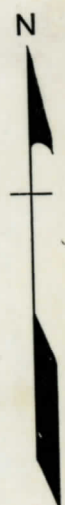
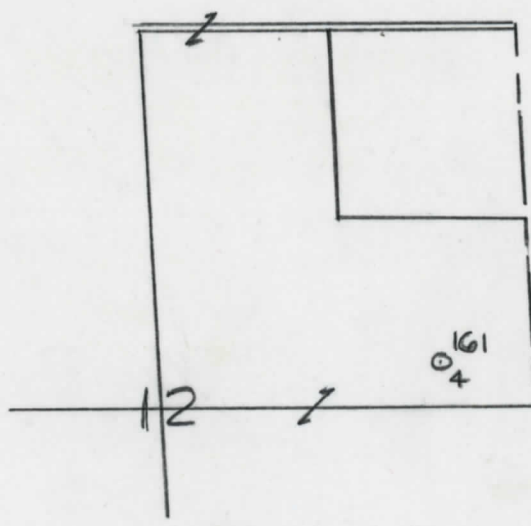
Operator Sun Oil Co. Map Norwich Twp. Missaukee Co

660	660	Feet from North Line of Lease
330	330	" " East " " "
		" " South " " "
		" " West " " "

660	660	Feet from North Line of Section
330	330	" " East " <u>1/4</u> "
		" " South " " "
		" " West " " "

LEGEND

- Location
- ☀ Gas Well
- Oil Well
- ☀ Gas - Distillate Well
- ∅ or ○ Dry Hole
- Dry Showing Oil
- ☀ Dry Showing Gas
- ⊗ Abandoned Location
- ☀ or ☀ Abandoned Gas Well
- or ● Abandoned Oil Well
- or ○ Input Well



Scale _____

Remarks: _____

Submitted by RN Civil Engineer

Approved by _____ Division Manager

Approved by _____ Vice-President - General Manager

Michigan Producing Division

Date November 1, 1944 No. 161
 State Mich. County Missaukee Twp. Norwich Sec. 12 Twp. 24 N Rge. 5 W
 Well No. 4 (Serial No.) 161 Farm Wm. H. Fahrney Est. Acres _____
 Operator Sun Oil Company Information secured by Scouting Department
 Date well started 9-3-44 Date well completed 10-11-44 Elevation 1313.0

PRODUCTION BOARD

1st 24 hours natural None
 2nd 24 hours natural _____
 Date of shot 10-23-44 and 10-27-44 No. of quarts _____
 Date of acid 10-27-44 No. of gallons 3000
 1st 24 hours after acid 3000 Flowed 120 Barrels.
 2nd 24 hours after acid _____

FORMATION AND CASING RECORD

Formation	Top	Bottom	Top Pay	Bottom Pay	Remarks	Casing	
						Size	Set at
Marshall	695	(+618)				13-3/8"	61
Traverse Line	2479	SIM.	(-1166)			8-1/4"	537
Dundee	3169	"	(-1856)		See perforations given below.	5-3/16"	4584
Total Depth	4585	SIM.	(-3272)				
Plugged back T.D.	4460	Comp.	9-13-48				

Remarks Perf. w/31 shots 4396-4411; 117 shots 4425-4454; 9 shots 4503-4509; 5 shots 4509 1/2-4511 1/2; 8 shots 4512-4519; 15 shots 4563 1/2-4570 1/2; 9 shots 4571-4579.
 4589' eq. 4585' SIM.-Schlum.; 623' DP eq. 625' SIM; 2424' eq. 2418' SIM; 3118' eq. 3118' SIM.

Signed D. C. Shackelford