



Western Michigan University
ScholarWorks at WMU

Legacy Scout Tickets from Pure Oil Company

8-20-2021

**MGRRE_PureOilScoutTickets_Horner, Frank S
Tr_17_21113109760000**

MGRRE
Western Michigan University

Follow this and additional works at: <https://scholarworks.wmich.edu/pure>



Part of the Geology Commons

WMU ScholarWorks Citation

MGRRE, "MGRRE_PureOilScoutTickets_Horner, Frank S Tr_17_21113109760000" (2021). *Legacy Scout Tickets from Pure Oil Company*. 5965.
<https://scholarworks.wmich.edu/pure/5965>

This Document is brought to you for free and open access via ScholarWorks at WMU. It has been accepted for inclusion in Legacy Scout Tickets from Pure Oil Company by an authorized administrator of ScholarWorks at WMU. See the National Digital Catalogue - Science Base Catalogue for more collections submitted by MGRRE.



MGRRE_PureOilScoutTickets_Horner, Frank S Tr_17_21113109760000

API 21113109760000

Permit Number 10976

Lease Name Horner, Frank S Tr

Well Number 17

County Missaukee

Township 24N

Range 05W

Section 12

2021 DEQ or Pure co_name Oryx Energy Company

Pure Number 163

Latitude 44.48482

Longitude -84.86008

THE PURE OIL COMPANY

COMPLETION RECORD OF WELLS DRILLED BY OTHER OPERATORS

LOCATION REPORT

Date August 16, 1944

A.F.E. No.

Division Mich. Producing

District

Lease

Frank S. Horner Tr
Frank S. Horner, Tr.

Acres

Lease No.

Elevation

Well No.

(Serial No.

17

163

Quadrangle

Sec.

Twp.

Rge.

~~BR~~
~~BR~~
Twp.

Norwich

CS 1/2 NW SE
C S 2 NW SE

12

24 N
24 N

5 W
5 W

Survey

County

State

Missaukee

Michigan

Operator

Sun Oil Co
Sun Oil Company

Map

Norwich Twp - Missaukee Co
Norwich Township, Missaukee County

990 990 Feet from North Line of Lease

1980 1980 " " East " " "

" " South " " "

" " West " " "

990 990 Feet from North Line of Section

" " East " " "

" " South " " "

" " West " " "

660 660

LEGEND

○ Location

☀ Gas Well

● Oil Well

☀ Gas - Distillate Well

○ or ○ Dry Hole

● Dry Showing Oil

☀ Dry Showing Gas

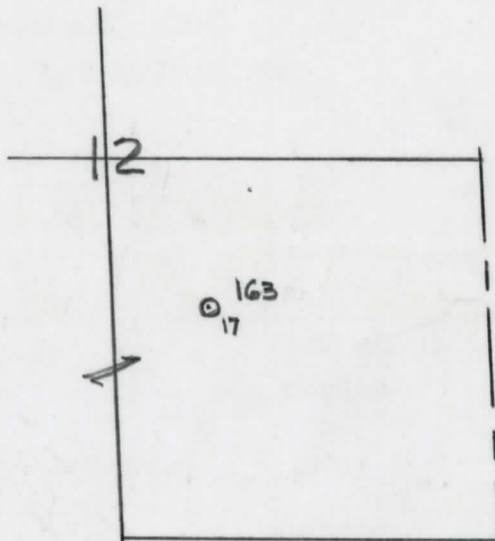
⊖ Abandoned Location

☀ or ☀ Abandoned Gas Well

● or ● Abandoned Oil Well

● or ○ Input Well

Loo



N

Scale _____

Remarks: _____

Submitted by

RN

Civil Engineer

Approved by _____

Division Manager

Approved by _____

Vice-President - General Manager

Michigan Producing Division

Date **January 4, 1945** No. **163**
 State **Mich.** County **Missaukee** ~~xxxxx~~ Twp. **Norwich** Sec. **12** Twp. **24 N** Rge. **5 W**
 Well No. **17** (Serial No.) ~~xxxxx~~ **163** Farm **F. S. Horner, Tr.** Acres
 Operator **Sun Oil Company** Information secured ~~from~~ **By Scouting Department**
 Date well started **8-26-44** Date well completed **12-6-44** Elevation **1348.9**

PRODUCTION BOARD

1st 24 hours natural **243,000 Cu. Ft.**
 2nd 24 hours natural
 Date of shot **12-10-44** and **12-21-44** No. of quarts **4000**
 Date of acid **12-21-44** No. of gallons **4000**
 1st 24 hours after acid shot **2,000,000 Cu. Ft.**
 2nd 24 hours after acid

FORMATION AND CASING RECORD

Formation	Top	Bottom	Top Pay	Bottom Pay	Remarks	Casing	
						Size	Set at
Marshall	736	(+613)			Show oil in Marshall samples. (+613)	8-5/8"	569
Traverse Lime	2503	(-1154)				5-3/16"	4581
Dundee	3187	(-1838)					
Detroit River	?				Small show gas 4581-4607. (-3232) Inc. gas & small show oil 4630-4640. (-3281) Gas gauged 300,000 cu. ft. at 4646. (-3297)		
Total Depth		4688		(-3339)			
On 12-10-44 Perf.	4542½	4578	with 72 shots - gas gauged 243,000 cu. ft.				
" 12-17-44 "	4498	4552	with 109 shots.				
" ?	4449	4480	" 63 shots.				

Remarks **3111' equals 3111' SLM; 4608' equals 4609' SLM.**

Signed **D. C. Shackelford**