



Western Michigan University
ScholarWorks at WMU

Legacy Scout Tickets from Pure Oil Company

8-20-2021

**MGRRE_PureOilScoutTickets_Fahrney, Wm H
Est_6_21113110500000**

MGRRE
Western Michigan University

Follow this and additional works at: <https://scholarworks.wmich.edu/pure>



Part of the Geology Commons

WMU ScholarWorks Citation

MGRRE, "MGRRE_PureOilScoutTickets_Fahrney, Wm H Est_6_21113110500000" (2021). *Legacy Scout Tickets from Pure Oil Company*. 5966.
<https://scholarworks.wmich.edu/pure/5966>

This Document is brought to you for free and open access via ScholarWorks at WMU. It has been accepted for inclusion in Legacy Scout Tickets from Pure Oil Company by an authorized administrator of ScholarWorks at WMU. See the National Digital Catalogue - Science Base Catalogue for more collections submitted by MGRRE.



MGRRE_PureOilScoutTickets_Fahrney, Wm H Est_6_21113110500000

API 21113110500000

Permit Number 11050

Lease Name Fahrney, Wm H Est

Well Number 6

County Missaukee

Township 24N

Range 05W

Section 1

2021 DEQ or Pure co_name Merit Energy Company

Pure Number 165

Latitude 44.4956716

Longitude -84.8693811

THE PURE OIL COMPANY LOCATION REPORT

Date September 13, 1944 A.F.E. No. _____
 Division Mich. Producing District _____ Lease Wm. H. Fahrney Est
Wm. H. Fahrney Est
 Acres _____ Lease No. _____ Elevation _____ Well No. 6 (Serial No. 165)
 Quadrangle C S $\frac{1}{2}$ SW SW Sec. 1 Twp. 24 N Rge. 5 W Twp. Norwich
 Survey _____ County Missaukee State Michigan
 Operator Sun Oil Co. Map Norwich Twp - Missaukee Co.
Sun Oil Company Norwich Township, Missaukee County

Feet from North Line of Lease

" " East " " "

330 330 " " South " " "

660 660 " " West " " "

Feet from North Line of Section

" " East " " "

330 330 " " South 1/4 " "

660 660 " " West " " "

LEGEND

○ Location

☀ Gas Well

● Oil Well

☀ Gas - Distillate Well

∅ or ○ Dry Hole

● Dry Showing Oil

○ Dry Showing Gas

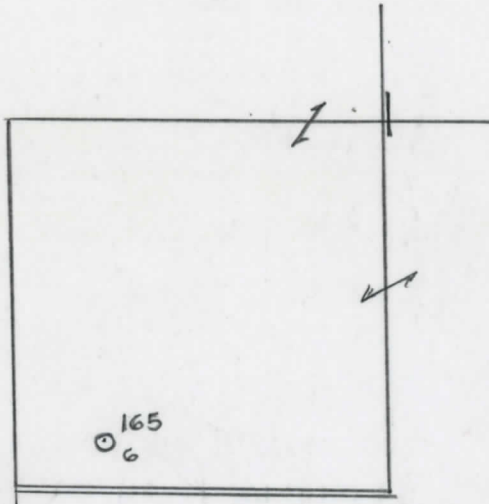
⊗ Abandoned Location

☀ or ☀ Abandoned Gas Well

● or ● Abandoned Oil Well

● or ○ Input Well

Low



Remarks: _____ Scale _____

Submitted by RN Civil Engineer Approved by _____ Division Manager
 Approved by _____ Vice-President - General Manager

The Pure Oil Company
COMPLETION RECORD OF WELLS DRILLED BY OTHER OPERATORS

Michigan Producing Division

Date January 24, 1945 No. 165
 State Mich. County Missaukee ~~Stock~~ Twp. Norwich Sec. 1 Twp. 24 N Rge. 5 W
 Well No. 6 (~~000000000~~) 165 Farm Wm. H. Fahrney Est. Acres _____
 Operator Sun Oil Company By Scouting Department
 Information secured ~~from~~ Scouting Department
 Date well started 11-20-44 Date well completed 12-16-44 Elevation 1278.5

PRODUCTION BOARD

1st 24 hours natural None reported.
 2nd 24 hours natural _____
 Date of shot _____ No. of quarts _____ From _____ to _____ From _____ to _____
 Date of acid 1-11-45 No. of gallons 4000
 1st 24 hours after acid ~~stock~~ Flowed 260 Barrels
 shot _____
 2nd 24 hours after acid _____

FORMATION AND CASING RECORD

Formation	Top	Bottom	Top Pay	Bottom Pay	Remarks	Casing	
						Size	Set at
Marshall	670	(+609)				8-5/8"	845
Traverse Lime	2455	(-1176)				5-3/16"	4528
Dundee	3144	(-1865)					
Detroit River	?		4363	4377	(-3084)		
<i>Trav fm.</i>	2425	(-1146)	4380	4415	(-3101)		
			4540	4545	(-3261)		
Total Depth		4550 SLM.	(-3271)				
Perf.	4363	4377	37 Shots				
"	4380	4415	119 "				
"	4426	4442	25 "				
"	4465	4515	125 "				

Remarks 2315' equals 2322' SLM; 4405' equals 4405' SLM.

Signed D. C. Shackelford