



Western Michigan University  
ScholarWorks at WMU

---

Legacy Scout Tickets from Pure Oil Company

---

8-20-2021

**MGRRE\_PureOilScoutTickets\_Horner, Frank S.,  
Trustee\_15\_21113112010000**

MGRRE  
*Western Michigan University*

Follow this and additional works at: <https://scholarworks.wmich.edu/pure>



Part of the Geology Commons

---

#### **WMU ScholarWorks Citation**

MGRRE, "MGRRE\_PureOilScoutTickets\_Horner, Frank S., Trustee\_15\_21113112010000" (2021). *Legacy Scout Tickets from Pure Oil Company*. 5970.  
<https://scholarworks.wmich.edu/pure/5970>

This Document is brought to you for free and open access via ScholarWorks at WMU. It has been accepted for inclusion in Legacy Scout Tickets from Pure Oil Company by an authorized administrator of ScholarWorks at WMU. See the National Digital Catalogue - Science Base Catalogue for more collections submitted by MGRRE.



---

MGRRE\_PureOilScoutTickets\_Horner, Frank S., Trustee\_15\_21113112010000

API 21113112010000

Permit Number 11201

Lease Name Horner, Frank S., Trustee

Well Number 15

County Missaukee

Township 24N

Range 05W

Section 22

2021 DEQ or Pure co\_name Merit Energy Company

Pure Number 169

Latitude 44.4629844

Longitude -84.9022085

# THE PURE OIL COMPANY

## LOCATION REPORT

Date November 8, 1944

A.F.E. No. \_\_\_\_\_

Division Mich. Producing District \_\_\_\_\_

Lease Frank S. Horner, Tr  
Frank S. Horner, Tr.

Acres \_\_\_\_\_ Lease No. \_\_\_\_\_ Elevation \_\_\_\_\_ Well No. 15 (Serial No. 169)

Quadrangle C S 1/2 NW NE Sec. 22 Twp. 24 N Rge. 5 W Twp. Norwich

Survey \_\_\_\_\_ County Missaukee State Michigan

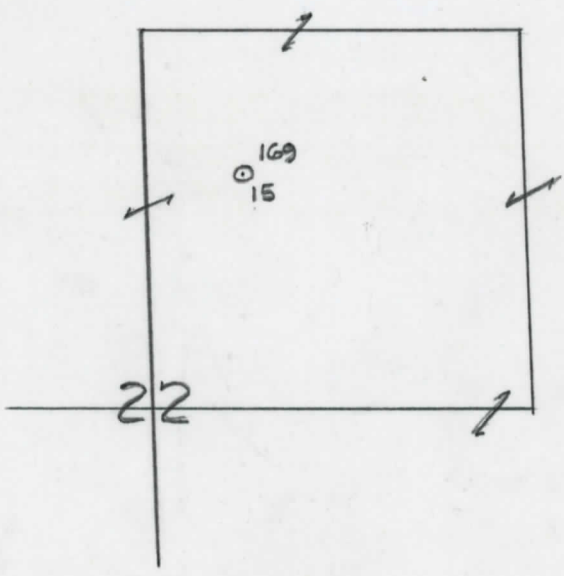
Operator Sun Oil Co Map Norwich Twp - Missaukee Co

Operator	2310	2310	Feet from North Line of Lease
			" " East " " "
			" " South " " "
	5940	5940	" " West " " "
	990	990	Feet from North Line of Section
			" " East " " "
			" " South " " "
	660	660	" " West " " "

### LEGEND

- Location
- ☀ Gas Well
- Oil Well
- ☀ Gas - Distillate Well
- ∅ or ○ Dry Hole
- Dry Showing Oil
- ☀ Dry Showing Gas
- ⊗ Abandoned Location
- ☀ or ☀ Abandoned Gas Well
- or ● Abandoned Oil Well
- or ○ Input Well

*Loe*



Scale \_\_\_\_\_

Remarks: \_\_\_\_\_  
\_\_\_\_\_  
\_\_\_\_\_

Submitted by RN Civil Engineer

Approved by \_\_\_\_\_ Division Manager

Approved by \_\_\_\_\_ Vice-President - General Manager



The Pure Oil Company  
 COMPLETION RECORD OF WELLS DRILLED BY OTHER OPERATORS

Michigan Producing Division

Date **February 14, 1945** No. **169**  
 State **Mich.** County **Missaukee** ~~xxxxx~~ Twp. **Norwich** Sec. **22** Twp. **24 N** Rge. **5 W**  
 Well No. **15** (Serial No.) ~~xxxxxxx~~ **169** Farm **Frank S. Homer, Tr.** Acres \_\_\_\_\_  
 Operator **Sun Oil Company** Information secured ~~xxxxx~~ By **Scouting Department**  
 Date well started **12-9-44** Date well completed **1-17-45** Elevation **1168.6**

PRODUCTION BOARD

1st 24 hours natural **None reported.**  
 2nd 24 hours natural \_\_\_\_\_  
 Date of shot \_\_\_\_\_ No. of quarts \_\_\_\_\_ From \_\_\_\_\_ to \_\_\_\_\_ From \_\_\_\_\_ to \_\_\_\_\_  
 Date of acid **2-1-45;** **2-4-45** No. of gallons **3000**  
 1st 24 hours after acid ~~xxxxx~~ **Flowed 75 bbls. after second acid treatment.**  
 2nd 24 hours after acid shot \_\_\_\_\_

FORMATION AND CASING RECORD

Formation	Top	Bottom	Top Pay	Bottom Pay	Remarks	Casing	
						Size	Set at
Mich. Stray	510	(+659)				13-3/8"	52
Marshall	625	738	(+544)			8-5/8"	825
Traverse Form.	2378	(-1209)				5-3/16"	4312
Traverse Lime	2408	(-1239)			See remarks below.		
Dundee	3113	(-1944)			" " "		
Detroit River	?				Cored 4341-4359 rec.	18 ft.	
					" 4359-4371 "	12 ft.	
			4320	4324	(-3151)		
			4342	4346	(-3172)		
			4353	4356	(-3184)		
			4368	4371	(-3199)		
Total Depth		4457			(-3288)		

Remarks Cored: 2395-2409 rec. 13'6"; 2409-2424 1/2 rec. 13'6"; D.S.T. 2409-2424 1/2 open 1 1/2 hrs. rec. 90' salty drlg. fluid; cored: 2483-2501 rec. 18'; 2501-2515 rec. 13'2"; 3086-3098 rec. 16'; 3098-3116 rec. 18'; 3116-3133 rec. 13'. D.S.T. 3114-3133 open 1 hr. rec. 120 ft. salty drlg. fluid - cored: 3133-3151 rec. 9'. Base of big salt 4160; base of big Anhydrite 4437. 576' eq. 582' SLM; 3118' eq. 3118' SLM.

Signed **D. C. Shackelford**