



Western Michigan University
ScholarWorks at WMU

Legacy Scout Tickets from Pure Oil Company

8-20-2021

**MGRRE_PureOilScoutTickets_State
Norwich_A1_21113112770000**

MGRRE
Western Michigan University

Follow this and additional works at: <https://scholarworks.wmich.edu/pure>



Part of the Geology Commons

WMU ScholarWorks Citation

MGRRE, "MGRRE_PureOilScoutTickets_State Norwich_A1_21113112770000" (2021). *Legacy Scout Tickets from Pure Oil Company*. 5974.
<https://scholarworks.wmich.edu/pure/5974>

This Document is brought to you for free and open access via ScholarWorks at WMU. It has been accepted for inclusion in Legacy Scout Tickets from Pure Oil Company by an authorized administrator of ScholarWorks at WMU. See the National Digital Catalogue - Science Base Catalogue for more collections submitted by MGRRE.



MGRRE_PureOilScoutTickets_State Norwich_A1_21113112770000

API 21113112770000

Permit Number 11277

Lease Name State Norwich

Well Number A1

County Missaukee

Township 24N

Range 05W

Section 12

2021 DEQ or Pure co_name Merit Energy Company

Pure Number 173

Latitude 44.4921304

Longitude -84.8544811

THE PURE OIL COMPANY

LOCATION REPORT

Date December 13, 1944

A.F.E. No. _____

Division Mich. Producing District _____

Lease State-Norwich "A" Norwich 'A'

Acres _____ Lease No. _____ Elevation _____ Well No. 1 (Serial No. 173*)

Quadrangle C S 1/2 NE NE Sec. 12 Twp. 24 N Rge. 5 W Twp. Norwich

Survey _____ County Missaukee State Michigan

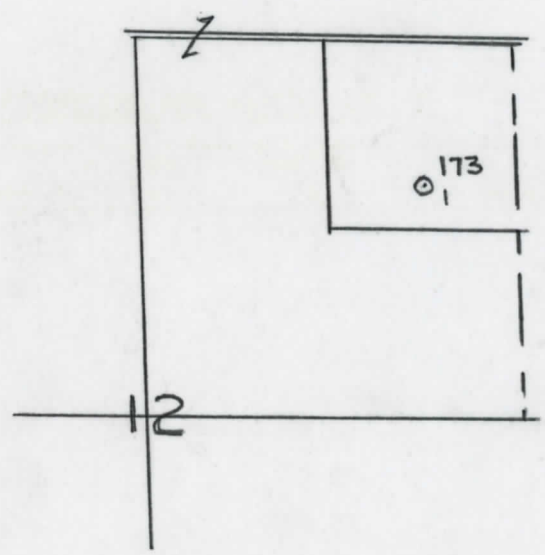
Operator Sun Oil Company Map Norwich Twp. - Missaukee Co.

<u>660</u>	<u>660</u>	Feet from North Line of Lease
<u>330</u>	<u>330</u>	" " East " " "
		" " South " " "
		" " West " " "
<u>990</u>	<u>990</u>	Feet from North Line of Section
<u>660</u>	<u>660</u>	" " East " " "
		" " South " " "
		" " West " " "

LEGEND

- Location
- ☀ Gas Well
- Oil Well
- ☀ Gas - Distillate Well
- or ○ Dry Hole
- Dry Showing Oil
- ☀ Dry Showing Gas
- ⊗ Abandoned Location
- ☀ or ☀ Abandoned Gas Well
- or ● Abandoned Oil Well
- or ○ Input Well

Loc



Remarks: _____
Scale _____

Submitted by RJ Civil Engineer

Approved by _____ Division Manager

Approved by _____ Vice-President - General Manager

The Pure Oil Company

COMPLETION RECORD OF WELLS DRILLED BY OTHER OPERATORS

Michigan Producing Division

Date **February 21, 1945** No. **173**
 State **Mich.** County **Missaukee** ~~XXXXX~~ Twp. **Norwich** Sec. **12** Twp. **24 N** Rge. **5 W**
 Well No. **A-1** (~~XXXXXXXXXX~~) **173** Farm **State-Norwich** Acres
 Operator **Sun Oil Company** Information secured ~~XXXX~~ By **Scouting Department**
 Date well started **12-28-44** Date well completed **1-23-45** Elevation **1224.6**

PRODUCTION BOARD

1st 24 hours natural **2500 ft. Oil in hole.**
 2nd 24 hours natural
 Date of shot No. of quarts From to From to
 Date of acid **2-11-45** No. of gallons **4000**
 1st 24 hours after acid ~~XXXX~~ **Flowed 141 barrels.**
 2nd 24 hours after acid ~~XXXX~~ **Flowed 178 barrels.**

FORMATION AND CASING RECORD

Formation	Top	Bottom	Top Pay	Bottom Pay	Remarks	Casing	
						Size	Set at
Marshall	615	(7610)				13-3/8"	51
Traverse Lime	2387	SLM.	(-1162)			8-5/8"	797
Dundee	3081	"	(-1856)			5-3/16"	4330
Detroit River	?						
Cored:	4378	4396		Recovered 18 ft.			
	4396	4413		" 17 ft.			
	4413	4431		" 18 ft.			
	4431	4449		" 17 ft. 3 in.			
			4346	4348	(-3221)		
			4360	4365	(-3235)		
			4482	4485	(-3257)		
Total Depth		4498	(-3273)				

Remarks **2367' equals 2371' SLM; 3069' equals 3068' SLM; 4376' equals 4380' SLM.**

Signed **D. C. Shackelford**