



Western Michigan University
ScholarWorks at WMU

Legacy Scout Tickets from Pure Oil Company

8-20-2021

MGRRE_PureOilScoutTickets_Fahrney, Wm H Estate_8_21113113360000

MGRRE

Western Michigan University

Follow this and additional works at: <https://scholarworks.wmich.edu/pure>



Part of the Geology Commons

WMU ScholarWorks Citation

MGRRE, "MGRRE_PureOilScoutTickets_Fahrney, Wm H Estate_8_21113113360000" (2021). *Legacy Scout Tickets from Pure Oil Company*. 5977.

<https://scholarworks.wmich.edu/pure/5977>

This Document is brought to you for free and open access via ScholarWorks at WMU. It has been accepted for inclusion in Legacy Scout Tickets from Pure Oil Company by an authorized administrator of ScholarWorks at WMU. See the National Digital Catalogue - Science Base Catalogue for more collections submitted by MGRRE.



MGRRE_PureOilScoutTickets_Fahrney, Wm H Estate_8_21113113360000

API 21113113360000

Permit Number 11336

Lease Name Fahrney, Wm H Estate

Well Number 8

County Missaukee

Township 24N

Range 05W

Section 1

2021 DEQ or Pure co_name Merit Energy Company

Pure Number 176

Latitude 44.4991984

Longitude -84.8590397

THE PURE OIL COMPANY LOCATION REPORT

Date January 31, 1945

A.F.E. No. Wm. H. Fahrney Est.
Wm. H. Fahrney Est.

Division Mich. Producing District _____

Lease Wm. H. Fahrney Est.
Well No. 8 (Serial No. 176)

Acres _____ Lease No. _____ Elevation _____

Quadrangle C S 1/2 NW SE Sec. 1 Twp. 24 N Rge. 5 W Twp. Norwich

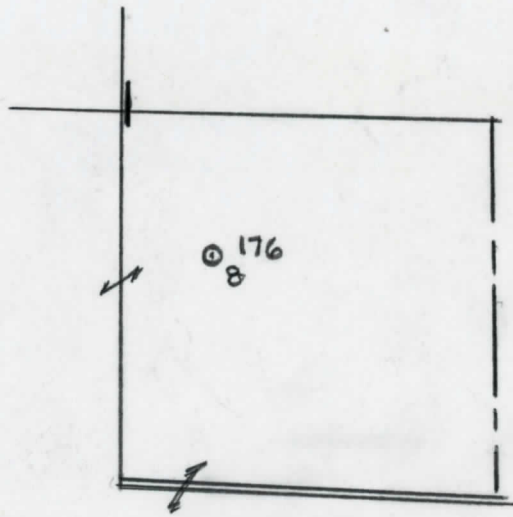
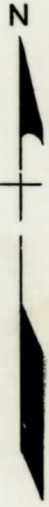
Survey _____ County Missaukee State Michigan

Operator Sun Oil Co Map Norwich Twp - Missaukee Co
Sun Oil Company Norwich Township, Missaukee County

1980	1980	Feet from North Line of Lease
1650	1650	“ “ East “ “ “
990	990	“ “ South “ “ “
		“ “ West “ “ <u>1/4</u> “
		Feet from North Line of Section
		“ “ East “ “ “
		“ “ South “ “ “
660	660	“ “ West “ “ “

LEGEND

- Location
- ☀ Gas Well
- Oil Well
- ☀ Gas - Distillate Well
- ∅ or ○ Dry Hole
- Dry Showing Oil
- ☀ Dry Showing Gas
- ⊗ Abandoned Location
- ☀ or ⊗ Abandoned Gas Well
- or ● Abandoned Oil Well
- or ○ Input Well



Scale _____

Remarks: _____

Submitted by BN Civil Engineer Approved by _____ Division Manager

Approved by _____ Vice-President - General Manager

THE PURE OIL COMPANY

The Pure Oil Company

COMPLETION RECORD OF WELLS DRILLED BY OTHER OPERATORS

Michigan Producing Division

Date May 9, 1945 No. 176
 State Mich. County Missaukee ~~XXXXX~~ Twp. Norwich Sec. 1 Twp. 24 N Rge. 5 W
 (Serial No.)
 Well No. 8 (~~XXXXX~~) 176 Farm Wm. H. Fahrney Est. Acres
 Operator Sun Oil Company Information secured ~~XXXXX~~ By Scouting Department
 Date well started 2-12-45 Date well completed 4-12-45 Elevation 1268.8

PRODUCTION BOARD

1st 24 hours natural None reported.
 2nd 24 hours natural
 Date of shot 4-27-45 and 4-28-45 No. of quarts XXXXX From XXXXX To XXXXX From XXXXX to XXXXX
 Date of acid 4-28-45 No. of gallons 6000
10 ~~XXXXX~~
 1st ~~XXXX~~ hours after acid Flowed 75 Barrels
 shot
 2nd 24 hours after acid

FORMATION AND CASING RECORD

Formation	Top	Bottom	Top Pay	Bottom Pay	Remarks	Casing	
						Size	Set at
Marshall	685	(+584)				13-3/8"	29
Traverse Lime	2458	S.L.M.	(-1199)			8-5/8"	852
Dundee	3153	"	(-1884)			5-3/16"	4428
Detroit River	?		4371	4375	(-3102)		
			4391	4394	(-3122)		
			4404	4415	(-3135)		
Total Depth		4558	(-3289)				
Plugged back:		4470	(-3201)				
Perf.	4400	4420	62	Shot.			
"	4386	4400	39	"			
"	4366	4380	43	"	Recovered show of oil from perforations.		

Remarks 600' eq. 600' SLM; 2450' eq. 2465' SLM; 3035' eq. 3038' SLM.

Signed D. C. Shackelford