



Western Michigan University  
ScholarWorks at WMU

---

Legacy Scout Tickets from Pure Oil Company

---

8-20-2021

**MGRRE\_PureOilScoutTickets\_State Aetna\_A-1\_21113114520000**

MGRRE

*Western Michigan University*

Follow this and additional works at: <https://scholarworks.wmich.edu/pure>



Part of the Geology Commons

---

#### **WMU ScholarWorks Citation**

MGRRE, "MGRRE\_PureOilScoutTickets\_State Aetna\_A-1\_21113114520000" (2021). *Legacy Scout Tickets from Pure Oil Company*. 5981.

<https://scholarworks.wmich.edu/pure/5981>

This Document is brought to you for free and open access via ScholarWorks at WMU. It has been accepted for inclusion in Legacy Scout Tickets from Pure Oil Company by an authorized administrator of ScholarWorks at WMU. See the National Digital Catalogue - Science Base Catalogue for more collections submitted by MGRRE.



---

**MGRRE\_PureOilScoutTickets\_State Aetna\_A-1\_21113114520000**

API 21113114520000

Permit Number 11452

Lease Name State Aetna

Well Number A-1

County Missaukee

Township 22N

Range 06W

Section 15

2021 DEQ or Pure co\_name Gordon Oil Company

Pure Number 180

Latitude 44.2977

Longitude -85.01784

THE PURE OIL COMPANY

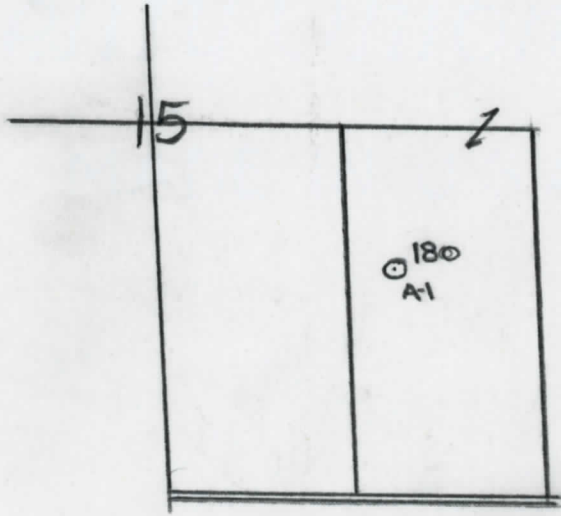
Form 24-P100-P000-10M-11-3-45  
 Form 24-P100-P000-10M-11-3-45 P50 Page

Date April 4, 1945 LOCATION REPORT A.F.E. No. \_\_\_\_\_  
 Division Mich. Producing District \_\_\_\_\_ Lease State-Aetna  
 Acres \_\_\_\_\_ Lease No. \_\_\_\_\_ Elevation \_\_\_\_\_ Well No. A-1 (Serial No. 180)  
 Quadrangle SW-NE-SE Sec. 15 Twp. 22 N Rge. 6 W Twp. Aetna  
 Survey The Gordon Oil Co. County Missaukee State Michigan  
 Operator Gordon Oil Company Map Aetna Twp - Missaukee Co.

		Feet from North Line of Lease			
<u>330</u>	<u>330</u>	" "	East	" "	" "
<u>330</u>	<u>330</u>	" "	South	" "	" "
<u>990</u>	<u>990</u>	Feet from North Line of Section	West	" <u>1/4</u>	" "
<u>990</u>	<u>990</u>	" "	East	" "	" "
		" "	South	" "	" "
		" "	West	" "	" "

**LEGEND**

- Location
- ☀ Gas Well
- Oil Well
- ☀ Gas - Distillate Well
- ⊙ or ○ Dry Hole
- Dry Showing Oil
- ☀ Dry Showing Gas
- ⊙ Abandoned Location
- ☀ or ☀ Abandoned Gas Well
- or ● Abandoned Oil Well
- or ○ Input Well



Remarks: \_\_\_\_\_

Submitted by RW Civil Engineer Approved by \_\_\_\_\_ Division Manager

Approved by \_\_\_\_\_ Vice-President - General Manager

The Pure Oil Company  
COMPLETION RECORD OF WELLS DRILLED BY OTHER OPERATORS

Michigan Producing Division

Date June 13, 1945 No. 180  
State Mich. County Missaukee Twp. Aetna Sec. 15 Twp. 22 N Rge. 6 W  
(Serial No.)  
Well No A-1 (County No.) 180 Farm State-Aetna Acres  
Operator The Gordon Oil Company Information secured ~~xxxx~~ By Scouting Department  
Date well started 4-6-45 Date well completed 6-11-45 Elevation 1335.9

PRODUCTION BOARD

1st 24 hours natural Dry Hole  
2nd 24 hours natural  
Date of shot No. of quarts From To From to  
Date of acid No. of gallons  
shot  
1st 24 hours after acid shot  
2nd 24 hours after acid shot

FORMATION AND CASING RECORD

Formation	Top	Bottom	Top Pay	Bottom Pay	Remarks	Casing	
						Size	Set at
Brown Dolomite	1227	Schl.	1230	(1106) L.D.		10"	514
Mich. Stray	1403	"	1400	(164) Schl.		6-5/8"	1718
Marshall		1700	Schl.	(1364)		5-3/16"	4029 SLM.
Sunbury	2597	(1261)					
Traverse Form.	3300	C.T.M.	(1964)				
Trav. (Squaw Bay)	3333	"	(1992)				
Trav. (Alpena)	3390	"	(2054)		H.F.S.W. 3430.	(2094)	
Dundee	4028	S.L.M.	(2692)		3000 ft. S.W. from 4029-4037 1/2.	(2692)	
Total Depth		4037 1/2	(2701 1/2)				

Remarks 3527' equals 3548' S.L.M.; 4026' equals 4029' S.L.M.

Signed D. G. Shackelford