



Legacy Scout Tickets from Pure Oil Company

---

8-20-2021

**MGRRE\_PureOilScoutTickets\_Frank S. Horner,  
Trustee\_12\_21113107587000**

MGRRE  
*Western Michigan University*

Follow this and additional works at: <https://scholarworks.wmich.edu/pure>



Part of the Geology Commons

---

#### **WMU ScholarWorks Citation**

MGRRE, "MGRRE\_PureOilScoutTickets\_Frank S. Horner, Trustee\_12\_21113107587000" (2021). *Legacy Scout Tickets from Pure Oil Company*. 5982.  
<https://scholarworks.wmich.edu/pure/5982>

This Document is brought to you for free and open access via ScholarWorks at WMU. It has been accepted for inclusion in Legacy Scout Tickets from Pure Oil Company by an authorized administrator of ScholarWorks at WMU. See the National Digital Catalogue - Science Base Catalogue for more collections submitted by MGRRE.



---

**MGRRE\_PureOilScoutTickets\_Frank S. Horner, Trustee\_12\_21113107587000**

API 21113107587000

Permit Number 10758

Lease Name Frank S. Horner, Trustee

Well Number 12

County Missaukee

Township 24N

Range 05W

Section 16

2021 DEQ or Pure co\_name Oryx Energy Company

Pure Number 181

Latitude 44.46672

Longitude -84.92354

THE PURE OIL COMPANY

LOCATION REPORT

Date April 30, 1945

A.F.E. No. \_\_\_\_\_

Division Mich. Producing District \_\_\_\_\_

Lease Frank S. Horner, Tr  
Frank S. Horner, Tr.

Acres \_\_\_\_\_ Lease No. \_\_\_\_\_

Elevation \_\_\_\_\_ Well No. 12 A (Serial No. 181)

Quadrangle sw-sw-se  
SW SW SE Sec. 16

Twp. 24 N  
24 N Rge. 5 W  
5 W

Twp. Norwich  
Norwich

Survey \_\_\_\_\_ County Missaukee

State Michigan

Operator Sun Oil Co  
Sun Oil Company

Map Norwich Twp - Missaukee Co  
Norwich Township, Missaukee County

Feet from North Line of Lease

" " East " " "

" " South " " "

" " West " " "

Feet from North Line of Section

" " East " " "

" " South " " "

" " West " " "

380 380

330 330

LEGEND

○ Location

☀ Gas Well

● Oil Well

☀ Gas - Distillate Well

○ or ○ Dry Hole

● Dry Showing Oil

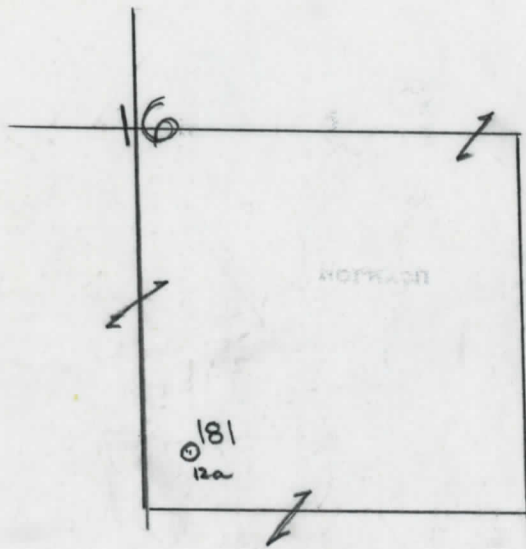
☀ Dry Showing Gas

⊗ Abandoned Location

☀ or ☀ Abandoned Gas Well

● or ● Abandoned Oil Well

⊗ or ⊗ Input Well



N

Brine Input WELL

Remarks: Brine Input Well.

Scale \_\_\_\_\_

Submitted by ew

Civil Engineer

Approved by \_\_\_\_\_

Division Manager

Approved by \_\_\_\_\_

Vice-President - General Manager

