



Western Michigan University
ScholarWorks at WMU

Legacy Scout Tickets from Pure Oil Company

8-20-2021

MGRRE_PureOilScoutTickets_Weidler, Sadie_1_21113115840000

MGRRE

Western Michigan University

Follow this and additional works at: <https://scholarworks.wmich.edu/pure>



Part of the Geology Commons

WMU ScholarWorks Citation

MGRRE, "MGRRE_PureOilScoutTickets_Weidler, Sadie_1_21113115840000" (2021). *Legacy Scout Tickets from Pure Oil Company*. 5985.

<https://scholarworks.wmich.edu/pure/5985>

This Document is brought to you for free and open access via ScholarWorks at WMU. It has been accepted for inclusion in Legacy Scout Tickets from Pure Oil Company by an authorized administrator of ScholarWorks at WMU. See the National Digital Catalogue - Science Base Catalogue for more collections submitted by MGRRE.



MGRRE_PureOilScoutTickets_Weidler, Sadie_1_21113115840000

API 21113115840000

Permit Number 11584

Lease Name Weidler, Sadie

Well Number 1

County Missaukee

Township 22N

Range 07W

Section 34

2021 DEQ or Pure co_name Wright, R. A. T. et al

Pure Number 184

Latitude 44.25698

Longitude -85.14339

THE PURE OIL COMPANY

LOCATION REPORT

Date May 31, 1945 A.F.E. No. ✓

Division Mich. Producing District _____ Lease Sadie Weidler
Sadie Weidler

Acres _____ Lease No. _____ Elevation _____ Well No. 1 (Serial No. 184)

Quadrangle W 1/2 NW SE Sec. 34 Twp. 22 N Rge. 7 W ~~ENCK~~ ~~ENCK~~ Twp. Reeder
Reeder

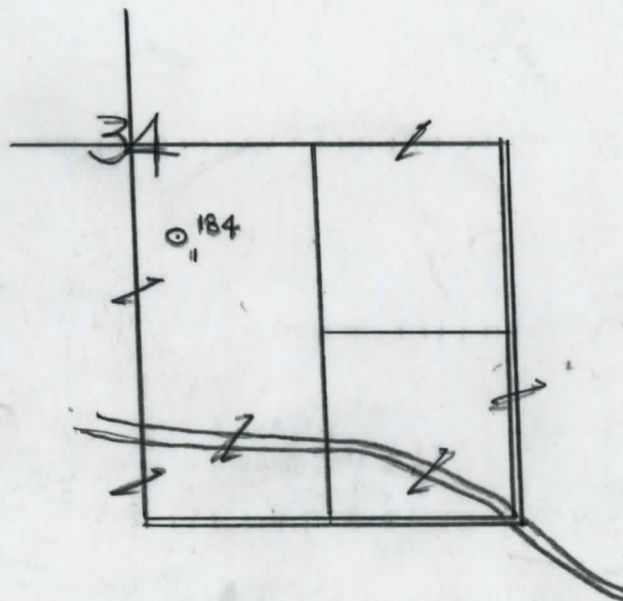
Survey _____ County Missaukee State Michigan

Operator R. A. T. Wright Map Reeder Twp. - Missaukee Co
R. A. T. Wright Reeder Township, Missaukee County

<u>660</u>	<u>660</u>	Feet from North Line of Lease
<u>990</u>	<u>990</u>	" " East " " "
		" " South " " "
		" " West " " "
<u>660</u>	<u>660</u>	Feet from North Line of Section <u>1/4</u>
		" " East " " "
		" " South " " "
<u>330</u>	<u>330</u>	" " West " " "

LEGEND

- Location
- ☉ Gas Well
- Oil Well
- ☼ Gas - Distillate Well
- ∅ or ○ Dry Hole
- or ○ Dry Showing Oil
- ☉ Dry Showing Gas
- ⊗ Abandoned Location
- ☼ or ☼ Abandoned Gas Well
- or ● Abandoned Oil Well
- or ○ Input Well



Remarks: _____

Scale _____

Submitted by EW Civil Engineer Approved by _____ Division Manager

Approved by _____ Vice-President - General Manager

COMPLETION RECORD OF WELLS DRILLED BY OTHER OPERATORS

Michigan Producing Division

Date October 3, 1945 No. 184
 State Mich. County Missaukee Twp. Reeder Sec. 34 Twp. 22 N Rge. 7 W
 Well No. 1 (County No.) 184 Farm Sadie Weidler Acres
 Operator R. A. T. Wright Information secured By Scouting Department
 Date well started 6-16-45 Date well completed 9-13-45 Elevation 1190.6

PRODUCTION BOARD

1st 24 hours natural Dry Hole
 2nd 24 hours natural
 Date of shot No. of quarts From To From to
 Date of acid No. of gallons
 1st 24 hours after acid shot
 2nd 24 hours after acid shot

FORMATION AND CASING RECORD

Formation	Top	Bottom	Top Pay	Bottom Pay	Remarks	Casing	
						Size	Set at
Brown Dolomite	1216	CTM	(-25)		H.F.W. 968. (x223)	10"	631
Mich. Stray	1366	SOM	(-175)		See remarks below.	8-1/4"	930
Marshall	1445	1623	(-254)			8-1/4"	1165
Antrim	2460	3240	(-1269)		(-2099)	6-5/8"	1640
Traverse Lime	3288	CTM.	(-2099)		200 ft. S.W. 3290-3302; Inc. 3302-10; very small show oil 3302. (-2111)	5-3/16"	3947
Dundee	3946	CTM.	(-2955)		400 ft. S.W. in 84 hrs. 4102-4108 SLM. (-2911)		
Total Depth		4108	(-2919)				

Remarks 1372' eq. 1371' SLM; 3205' eq. 3220' SOM; 4121' eq. 4108' SLM.
200 ft. salt water 1371'-1377' - gas 1395' to 1398'.
 (-180) (-204)

Signed D. C. Shackelford