



Legacy Scout Tickets from Pure Oil Company

8-20-2021

**MGRRE_PureOilScoutTickets_Horner, Frank S,
Tr_26_21113104950000**

MGRRE
Western Michigan University

Follow this and additional works at: <https://scholarworks.wmich.edu/pure>



Part of the Geology Commons

WMU ScholarWorks Citation

MGRRE, "MGRRE_PureOilScoutTickets_Horner, Frank S, Tr_26_21113104950000" (2021). *Legacy Scout Tickets from Pure Oil Company*. 5987.
<https://scholarworks.wmich.edu/pure/5987>

This Document is brought to you for free and open access via ScholarWorks at WMU. It has been accepted for inclusion in Legacy Scout Tickets from Pure Oil Company by an authorized administrator of ScholarWorks at WMU. See the National Digital Catalogue - Science Base Catalogue for more collections submitted by MGRRE.



MGRRE_PureOilScoutTickets_Horner, Frank S, Tr_26_21113104950000

API 21113104950000

Permit Number 10495

Lease Name Horner, Frank S, Tr

Well Number 26

County Missaukee

Township 24N

Range 05W

Section 2

2021 DEQ or Pure co_name Merit Energy Company

Pure Number 186

Latitude 44.4958013

Longitude -84.8795112

THE PURE OIL COMPANY LOCATION REPORT

Date June 27, 1945

A.F.E. No. _____

Division Mich. Producing District _____

Lease Frank S. Horner, Tr.
Frank S. Horner, Tr.

Acres _____ Lease No. _____ Elevation _____ Well No. 26 (Serial No. 186)

Quadrangle C S¹/₂ SW SE Sec. 2 Twp. 24 N Rge. 5 W ~~XBIX~~ ~~XDGE~~ Twp. Norwich

Survey _____ County Missaukee State Michigan

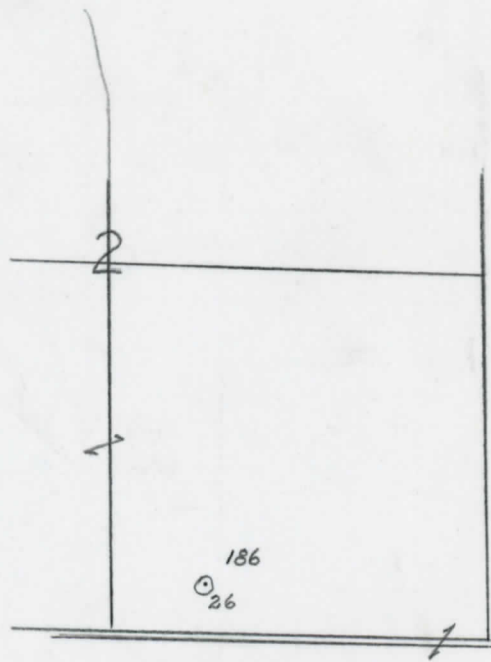
Operator Sun Oil Co.
Sun Oil Company Map Norwich Twp., Missaukee Co.
Norwich Township, Missaukee County

<u>2310</u>	<u>2310</u>	Feet from North Line of Lease
<u>1980</u>	<u>1980</u>	" " East " " "
		" " South " " "
		" " West " " "
		Feet from North Line of Section
<u>330</u>	<u>330</u>	" " East " " "
<u>660</u>	<u>660</u>	" " South <u>1/4</u> "
		" " West " " "

LEGEND

- Location
- ☀ Gas Well
- Oil Well
- ☀ Gas - Distillate Well
- or ○ Dry Hole
- Dry Showing Oil
- ☀ Dry Showing Gas
- ⊖ Abandoned Location
- ☀ or ☀ Abandoned Gas Well
- or ● Abandoned Oil Well
- or ○ Input Well

Low.



Remarks: _____

Scale _____

Submitted by _____ Civil Engineer Approved by _____ Division Manager

Approved by _____ Vice-President - General Manager

THE PURE OIL COMPANY

The Pure Oil Company

COMPLETION RECORD OF WELLS DRILLED BY OTHER OPERATORS

Michigan Producing Division

Date December 5, 1945 No. 186
 State Michigan Co. Missaukee Twp. Norwich Sec. 2 Twp. 24 N Rge 5 W
 Well No. 26 Serial No. 186 Farm F. S. Horner, Tr. Acres _____
 Operator Sun Oil Company
 Date started 9-1-45 Date completed 10-19-45 Elevation 1315.5

PRODUCTION RECORD

1st 24 hours natural None reported.
 Date of shot _____ No. of quarts _____ From _____ To _____ From _____ to _____
 Date of acid 11-17-45 No. of gallons 5000
 1st 24 hours after acid Flowed 65 Barrels
 Completed as: Oil Well Gas Well _____ Dry Hole _____

FORMATION AND CASING RECORD

Formation	Top	Bottom	Top Pay	Bottom Pay	Remarks	Casing	
						Size	Set at
Mich. Stray	606	S.L.M.	(+710)			13-3/8"	68
Marshall	734	(+582)				8-5/8"	844
Traverse Lime	2501	S.L.M.	(-1185)			5-3/16"	4438
Dundee	3189	(-1873)					
Detroit River	3510	(-2194)	4438	4441	(-3122)		
Det. River Salt	3555	4250	4453	4462	(-3137)		
	(-2239)		4521	(-3205)			
Total Depth		4575	(-3259)				

Remarks 642' equals 649' S.L.M.

Signed D. C. Shackelford