



Western Michigan University  
ScholarWorks at WMU

---

Legacy Scout Tickets from Pure Oil Company

---

8-20-2021

**MGRRE\_PureOilScoutTickets\_Horner, Frank S,  
Tr\_29\_21113117350000**

MGRRE  
*Western Michigan University*

Follow this and additional works at: <https://scholarworks.wmich.edu/pure>



Part of the Geology Commons

---

#### **WMU ScholarWorks Citation**

MGRRE, "MGRRE\_PureOilScoutTickets\_Horner, Frank S, Tr\_29\_21113117350000" (2021). *Legacy Scout Tickets from Pure Oil Company*. 5990.  
<https://scholarworks.wmich.edu/pure/5990>

This Document is brought to you for free and open access via ScholarWorks at WMU. It has been accepted for inclusion in Legacy Scout Tickets from Pure Oil Company by an authorized administrator of ScholarWorks at WMU. See the National Digital Catalogue - Science Base Catalogue for more collections submitted by MGRRE.



---

**MGRRE\_PureOilScoutTickets\_Horner, Frank S, Tr\_29\_21113117350000**

API 21113117350000

Permit Number 11735

Lease Name Horner, Frank S, Tr

Well Number 29

County Missaukee

Township 24N

Range 05W

Section 15

2021 DEQ or Pure co\_name Merit Energy Company

Pure Number 189

Latitude 44.4702451

Longitude -84.9117615

*prob on  
Tennessee  
72*

# THE PURE OIL COMPANY LOCATION REPORT

Date August 8, 1945 A.F.E. No. \_\_\_\_\_

Division Mich. Producing District \_\_\_\_\_ Lease Frank S. Horner, Tr.

Acres \_\_\_\_\_ Lease No. \_\_\_\_\_ Elevation \_\_\_\_\_ Well No. 29 (Serial No. 189)

Quadrangle C S<sup>1</sup>/<sub>2</sub> NW SW Sec. 15 Twp. 24 N Rge. 5 W INDEX  
Twp. Norwich

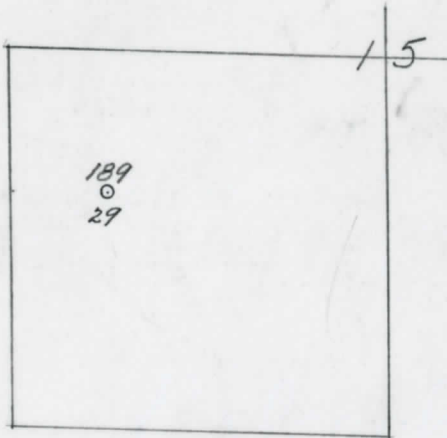
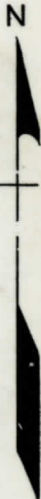
Survey \_\_\_\_\_ County Missaukee State Michigan

Operator Sun Oil Company 9 Map Norwich Township, Missaukee County

|                 |                                            |
|-----------------|--------------------------------------------|
| <u>990</u>      | Feet from North Line of Lease              |
| <u>1980</u>     | " " East " " "                             |
|                 | " " South " " "                            |
|                 | " " West " " "                             |
| <u>990</u>      | Feet from North Line of Section <u>1/4</u> |
| <del>1980</del> | " " East " " "                             |
|                 | " " South " " "                            |
| <u>660</u>      | " " West " " "                             |

### LEGEND

- Location
- ☀ Gas Well
- Oil Well
- ☀ Gas - Distillate Well
- ∅ or ○ Dry Hole
- Dry Showing Oil
- ☀ Dry Showing Gas
- ⊗ Abandoned Location
- ☀ or ⊗ Abandoned Gas Well
- or ● Abandoned Oil Well
- or ○ Input Well



Remarks: \_\_\_\_\_  
\_\_\_\_\_  
\_\_\_\_\_

Scale \_\_\_\_\_

Submitted by \_\_\_\_\_ Civil Engineer Approved by \_\_\_\_\_ Division Manager

Approved by \_\_\_\_\_ Vice-President - General Manager

COMPLETION RECORD OF WELLS DRILLED BY OTHER OPERATORS

Michigan Producing Division

Date December 19, 1945 No. 189
State Michigan Co. Missaukee Twp. Norwich Sec. 15 Twp. 24 N Rge 5 W
Well No. 29 Serial No. 189 Farm Frank S. Horner, Tr. Acres
Operator Sun Oil Company
Date started 9-5-45 Date completed 10-31-45 Elevation 1174.4

PRODUCTION RECORD

1st 24 hours natural
Date of shot No. of quarts From To From to
Date of acid 11-10-45 No. of gallons 3000 (4325' to 4349' thru perforations)
1st 24 hours after acid Increased salt water-no increase in oil or gas.
Completed as: Oil Well Gas Well Dry Hole X

FORMATION AND CASING RECORD

Table with columns: Formation, Top, Bottom, Top Pay, Bottom Pay, Remarks, Casing Size, Casing Set at. Rows include Marshall, Traverse Lime, Cored, Dundee, Detroit River, Det. River Salt, Total Depth, Perf., Plugged back, Perf.

Remarks D.S.T. 2376-2398-open 1 hr.-recovered gas in 7 min., 390 ft. oil and gas cut mud, 90 ft. oil and 270 ft. salt water. Dundee: Cored 3058-3076 rec. 18 ft.-bleeding oil 3073-3076; cored 3076-3094-recovered 17 ft.-bleeding oil 3076-3088. Traverse perforations as reported are above Traverse Lime-operator does not account for this.

Signed D. C. Shackelford