



Western Michigan University
ScholarWorks at WMU

Legacy Scout Tickets from Pure Oil Company

8-20-2021

MGRRE_PureOilScoutTickets_Ponstine, John_1_21113117440000

MGRRE

Western Michigan University

Follow this and additional works at: <https://scholarworks.wmich.edu/pure>



Part of the Geology Commons

WMU ScholarWorks Citation

MGRRE, "MGRRE_PureOilScoutTickets_Ponstine, John_1_21113117440000" (2021). *Legacy Scout Tickets from Pure Oil Company*. 5991.

<https://scholarworks.wmich.edu/pure/5991>

This Document is brought to you for free and open access via ScholarWorks at WMU. It has been accepted for inclusion in Legacy Scout Tickets from Pure Oil Company by an authorized administrator of ScholarWorks at WMU. See the National Digital Catalogue - Science Base Catalogue for more collections submitted by MGRRE.



MGRRE_PureOilScoutTickets_Ponstine, John_1_21113117440000

API 21113117440000

Permit Number 11744

Lease Name Ponstine, John

Well Number 1

County Missaukee

Township 21N

Range 07W

Section 25

2021 DEQ or Pure co_name Gulf Refining Company

Pure Number 190

Latitude 44.18507

Longitude -85.0958

THE PURE OIL COMPANY
COMPLETION RECORD OF OPERATORS

Date August 20, 1945 LOCATION REPORT A.F.E. No. _____

Division Mich. Producing District _____ Lease John Ponstine

Acres _____ Lease No. _____ Elevation _____ Well No. 1 (Serial No. 190)

Quadrangle C N 1/2 NE SE Sec. 25 Twp. 21 N Rge. 7 W RIVERSIDE

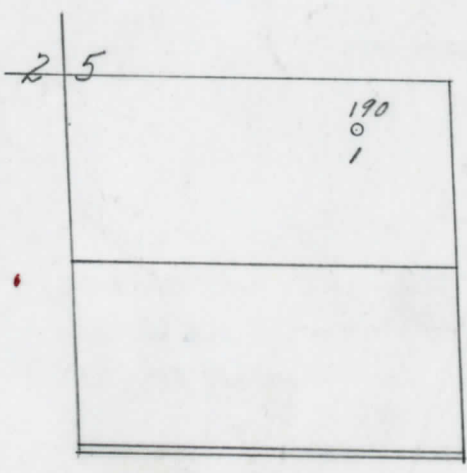
Survey _____ County Missaukee State Michigan

Operator Gulf Refining Company Map Riverside Township, Missaukee County

330	330	Feet from North Line of Lease
660	660	" " East " " "
		" " South " " "
		" " West " " "
330	330	Feet from North Line of Section
660	660	" " East " " "
		" " South " " "
		" " West " " "

LEGEND

- Location
- ☀ Gas Well
- Oil Well
- ☀ Gas - Distillate Well
- ∅ or ○ Dry Hole
- or ○ Dry Showing Oil
- ☀ Dry Showing Gas
- ⊗ Abandoned Location
- ☀ or ☀ Abandoned Gas Well
- or ● Abandoned Oil Well
- or ○ Input Well



Remarks: _____

Submitted by _____ Approved by _____ Division Manager

Civil Engineer

Approved by _____ Vice-President - General Manager

Michigan Producing Division

Date September 26, 1945 No. 190
 State Michigan Co. Missaukee Twp. Riverside Sec. 25 Twp. 21 N Rge. 7 W
 Well No. 1 Serial No. 190 Farm John Ponstine Acres _____
 Operator Gulf Refining Company
 Date started 8-17-45 Date completed 9-15-45 Elevation 1191.9

PRODUCTION RECORD

1st 24 hours natural _____
 Date of shot _____ No. of quarts _____ From _____ To _____ From _____ to _____
 Date of acid _____ No. of gallons _____
 1st 24 hours after acid _____
 Completed as: Oil Well _____ Gas Well _____ Dry Hole X

FORMATION AND CASING RECORD

Formation	Top	Bottom	Top Pay	Bottom Pay	Remarks	Casing	
						Size	Set at
Brown Dolomite	1253	SLM.	(-61)		See remarks below.	13-3/8"	667
Mich. Stray	1400	(-208)				8-5/8"	1716
Marshall		1683	(-491)				
Traverse Lime	3242	(-2050)					
Dundee	3913	SLM.	(-272)				
Cored:	3914	3922 1/2	No showings.				
D.S.T.	3916	3969	Open 40 minutes - recovered 540 ft. fresh water and 1260 ft. salt water.				
Total Depth		3969	(-2777)				

Remarks Cored: 1401-1407; D.S.T. 1395-1407-open 1 hour-recovered 125 ft. mud. 1325' equals 1323' SLM.

Signed D. C. Shackelford