



Western Michigan University  
ScholarWorks at WMU

---

Legacy Scout Tickets from Pure Oil Company

---

8-20-2021

**MGRRE\_PureOilScoutTickets\_Dept. of Conservation, State  
Pioneer\_1\_21113118220000**

MGRRE  
*Western Michigan University*

Follow this and additional works at: <https://scholarworks.wmich.edu/pure>



Part of the Geology Commons

---

#### WMU ScholarWorks Citation

MGRRE, "MGRRE\_PureOilScoutTickets\_Dept. of Conservation, State Pioneer\_1\_21113118220000" (2021).  
*Legacy Scout Tickets from Pure Oil Company*. 5994.  
<https://scholarworks.wmich.edu/pure/5994>

This Document is brought to you for free and open access via ScholarWorks at WMU. It has been accepted for inclusion in Legacy Scout Tickets from Pure Oil Company by an authorized administrator of ScholarWorks at WMU. See the National Digital Catalogue - Science Base Catalogue for more collections submitted by MGRRE.



---

**MGRRE\_PureOilScoutTickets\_Dept. of Conservation, State  
Pioneer\_1\_21113118220000**

API 21113118220000

Permit Number 11822

Lease Name Dept. of Conservation, State Pioneer

Well Number 1

County Missaukee

Township 24N

Range 07W

Section 6

2021 DEQ or Pure co\_name Freeman Oil Company

Pure Number 193

Latitude 44.49785

Longitude -85.19586

THE PURE OIL COMPANY

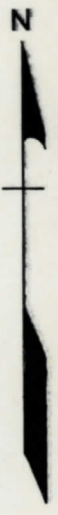
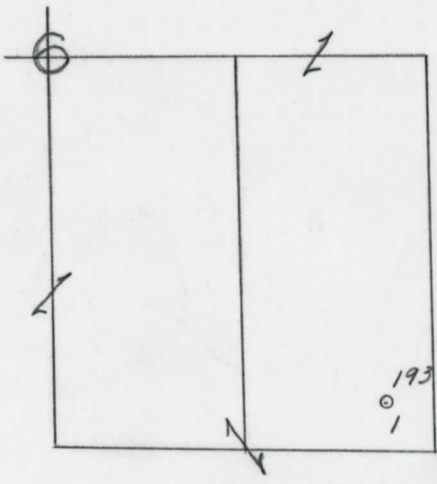
Date September 19, 1945 LOCATION REPORT A.F.E. No. \_\_\_\_\_  
 Division Mich. Producing District \_\_\_\_\_ Lease DEPT OF CONSERVATION, STATE OF MICH., STATE-PIONEER  
 State-Pioneer 193  
 Acres \_\_\_\_\_ Lease No. \_\_\_\_\_ Elevation \_\_\_\_\_ Well No. 1 (Serial No. 193)  
 SE-SE-SE  
 Quadrangle SE SE SE Sec. 6 Twp. 24 N Rge. 7 W Twp. PIONEER  
 XINDEX  
 XINDEX  
 Survey \_\_\_\_\_ County Missaukee State Michigan  
 Operator Freeman Oil Co. Map Pioneer Township, Missaukee County

Feet from North Line of Lease		Feet from North Line of Section	
<u>330</u>	<u>330</u>	" "	East " " "
<u>330</u>	<u>330</u>	" "	South " " "
		" "	West " " "
<u>330</u>	<u>330</u>	" "	East " <u>1/4</u> "
<u>330</u>	<u>330</u>	" "	South " " "
		" "	West " " "

**LEGEND**

- Location
- ☀ Gas Well
- Oil Well
- ☀ Gas - Distillate Well
- ∅ or ○ Dry Hole
- Dry Showing Oil
- ☀ Dry Showing Gas
- ⊖ Abandoned Location
- ☀ or ☀ Abandoned Gas Well
- or ● Abandoned Oil Well
- or ○ Input Well

*Rig*



Remarks: \_\_\_\_\_  
 \_\_\_\_\_  
 \_\_\_\_\_

Submitted by \_\_\_\_\_ Civil Engineer Approved by \_\_\_\_\_ Division Manager  
 Approved by \_\_\_\_\_ Vice-President - General Manager

**Michigan Producing** Division

Date February 13, 1946 No. 193  
 State Mich. County Missaukee ~~Dick~~ Twp. Pioneer Sec. 6 Twp. 24 N Rge 7 W  
 Well No. 1 (~~County No.~~) 193 Farm State-Pioneer Acres  
 Operator Freeman Oil Company Information secured ~~from~~ Scouting Department By  
 Date well started 10-10-45 Date well completed 12-14-45 Elevation 1093.4

PRODUCTION BOARD

1st 24 hours natural DRY HOLE  
 2nd 24 hours natural  
 Date of shot No. of quarts From To From to  
 Date of acid No. of gallons  
 1st 24 hours after acid shot  
 2nd 24 hours after acid shot

FORMATION AND CASING RECORD

Formation	Top	Bottom	Top Pay	Bottom Pay	Remarks	Casing	
						Size	Set at
Brown Dolomite	462	(4631)s				10"	455
Mich. Stray	630	(463)s				8-1/4"	913
Marshall	731	885	(1362)s			6-5/8"	2832
Sunbury	1703	(1610)				5-3/16"	3238
Antrim	2160	2544	(1067)				
Traverse Line	2564	S.L.M.	(1477)s		See remarks below.		
Dundee	3237	"	(2144)s		Small show oil 3238. (-2145)		
<i>Traverse</i>	2520	(1427)s			Show S.W. 3238-3242. (-2145)		
					300 ft. S.W. in 2 hrs. 3242-3249. (-2149)		
					2000 ft. S.W. in 2 hrs. 3249-3255. (-2156)		
Total Depth		3260	(2167)				

Remarks 2530' equals 2524' S.L.M.; 3206' equals 3203' S.L.M. (-1471)  
Small show oil and 150 ft. salt water in 1/2 hour from 2564'-2572'-H.F.S.W. 3164'-3170'. (-2071)

Signed D. C. Shackelford