



Western Michigan University  
ScholarWorks at WMU

---

Legacy Scout Tickets from Pure Oil Company

---

8-20-2021

**MGRRE\_PureOilScoutTickets\_Camlin, J H & Ellis, T M  
Estate\_3\_21113119050000**

MGRRE  
*Western Michigan University*

Follow this and additional works at: <https://scholarworks.wmich.edu/pure>



Part of the Geology Commons

---

#### **WMU ScholarWorks Citation**

MGRRE, "MGRRE\_PureOilScoutTickets\_Camlin, J H & Ellis, T M Estate\_3\_21113119050000" (2021).  
*Legacy Scout Tickets from Pure Oil Company*. 5996.  
<https://scholarworks.wmich.edu/pure/5996>

This Document is brought to you for free and open access via ScholarWorks at WMU. It has been accepted for inclusion in Legacy Scout Tickets from Pure Oil Company by an authorized administrator of ScholarWorks at WMU. See the National Digital Catalogue - Science Base Catalogue for more collections submitted by MGRRE.



---

MGRRE\_PureOilScoutTickets\_Camlin, J H & Ellis, T M Estate\_3\_21113119050000

API 21113119050000

Permit Number 11905

Lease Name Camlin, J H & Ellis, T M Estate

Well Number 3

County Missaukee

Township 24N

Range 05W

Section 15

2021 DEQ or Pure co\_name Oryx Energy Company

Pure Number 197

Latitude 44.47414

Longitude -84.90584

D  
T

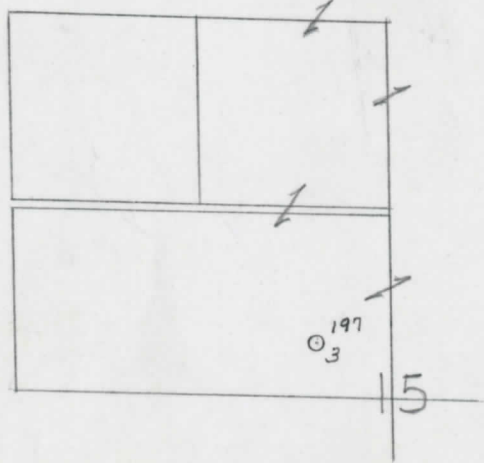
THE PURE OIL COMPANY  
LOCATION REPORT

Date October 17, 1945 A.F.E. No. J. H. Camlin & T. M. Ellis Est.  
 Division Mich. Producing District \_\_\_\_\_ Lease J. H. Camlin & T. M. Ellis Est.  
 Acres \_\_\_\_\_ Lease No. \_\_\_\_\_ Elevation \_\_\_\_\_ Well No. 3 (Serial No. 197)  
 Quadrangle S<sub>2</sub> SE NW Sec. 15 Twp. 24 N Rge. 5 W ~~SEK~~ ~~OSC~~ Norwich  
 Survey \_\_\_\_\_ County Missaukee State Michigan  
 Operator Sun Oil Map Norwich Township, Missaukee County

		Feet from North Line of Lease			
		" "	East	" "	" "
<u>380</u>	<u>380</u>	" "	South	" "	" "
<u>2130</u>	<u>2130</u>	" "	West	" "	" "
		Feet from North Line of Section			
<u>510</u>	<u>510</u>	" "	East	" "	<u>1/4</u>
<u>380</u>	<u>380</u>	" "	South	" "	" "
		" "	West	" "	" "

LEGEND

- Location
- ☀ Gas Well
- Oil Well
- ☀ Gas - Distillate Well
- ∅ or ○ Dry Hole
- Dry Showing Oil
- ☀ Dry Showing Gas
- ⊗ Abandoned Location
- ☀ or ☀ Abandoned Gas Well
- or ● Abandoned Oil Well
- or ○ Input Well



Scale \_\_\_\_\_

Remarks: \_\_\_\_\_  
 \_\_\_\_\_  
 \_\_\_\_\_

Submitted by \_\_\_\_\_ Civil Engineer Approved by \_\_\_\_\_ Division Manager  
 Approved by \_\_\_\_\_ Vice-President-General Manager

The Pure Oil Company  
 COMPLETION RECORD OF WELLS DRILLED BY OTHER OPERATORS

Michigan Producing Division

Date **January 16, 1946** No. **197**  
 State **Mich.** County **Missaukee** ~~Dist.~~ Twp. **Norwich** Sec. **15** Twp. **24 N** Rge. **5 W**  
 Well No. **3** ~~(County No.)~~ **197** Farm **Camlin & Ellis Estate** Acres  
 Operator **Sun Oil Company** Information secured ~~From~~ By **Scouting Department**  
 Date well started **11-3-45** Date well completed **12-18-45** Elevation **1177.5**

PRODUCTION BOARD

1st 24 hours natural **None reported.**  
 2nd 24 hours natural  
 Date of shot **12-19-45 and** No. of quarts From To From to  
 Date of acid **12-20-45** No. of gallons **3000**  
 1st 24 hours after acid **Flowed 15 Bbls.**  
 2nd 24 hours after acid

FORMATION AND CASING RECORD

OIL WELL

Formation	Top	Bottom	Top Pay	Bottom Pay	Remarks	Casing	
						Size	Set at
Marshall	605	(+573)				8-5/8"	775
Traverse Line	2381	(-1203)			See remarks below.	5-3/16"	4335
Dundee	3077	(-1899)					
Detroit River	3365	(-2187)					
Salt Anhydrite		4169	(-2991)				
Sylvania Form.	4518	(-3340)	4439	4450	(-3261)		
Total Depth		4528	(-3350)				
Plugged back:		4485	(-3307)				

Remarks **2300' equals 2302' S.L.M. - 2365' equals 2363' S.L.M.**  
 Traverse: Cored: 2362-2380 recovered 18 ft. shale; 2380 to 2394 recovered 13'4" shale;  
 drill stem test 2376 to 2394, open 1 1/2 hours, recovered 60 ft. oil and gas cut mud and 780 ft.  
 gas cut salt water.

Signed **D. C. Shackelford**