



Western Michigan University
ScholarWorks at WMU

Legacy Scout Tickets from Pure Oil Company

8-20-2021

MGRRE_PureOilScoutTickets_Fahrney, W H (Norwich Unit Tr 5 #10) Estate_10_21113120150000

MGRRE

Western Michigan University

Follow this and additional works at: <https://scholarworks.wmich.edu/pure>



Part of the Geology Commons

WMU ScholarWorks Citation

MGRRE, "MGRRE_PureOilScoutTickets_Fahrney, W H (Norwich Unit Tr 5 #10) Estate_10_21113120150000" (2021). *Legacy Scout Tickets from Pure Oil Company*. 5997. <https://scholarworks.wmich.edu/pure/5997>

This Document is brought to you for free and open access via ScholarWorks at WMU. It has been accepted for inclusion in Legacy Scout Tickets from Pure Oil Company by an authorized administrator of ScholarWorks at WMU. See the National Digital Catalogue - Science Base Catalogue for more collections submitted by MGRRE.



**MGRRE_PureOilScoutTickets_Fahrney, W H (Norwich Unit Tr 5 #10)
Estate_10_21113120150000**

API 21113120150000

Permit Number 12015

Lease Name Fahrney, W H (Norwich Unit Tr 5 #10) Estate

Well Number 10

County Missaukee

Township 24N

Range 05W

Section 1

2021 DEQ or Pure co_name Merit Energy Company

Pure Number 199

Latitude 44.4993021

Longitude -84.8690499

THE PURE OIL COMPANY LOCATION REPORT

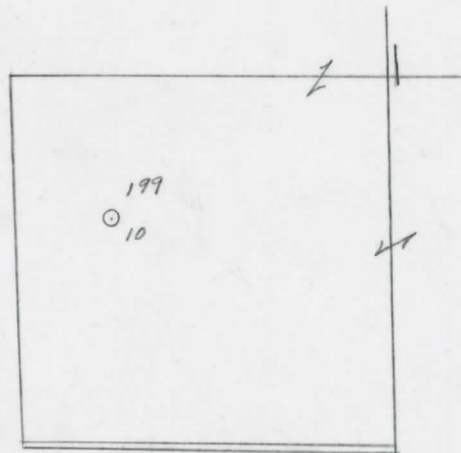
Date December 5, 1945 A.F.E. No. Wm. H. Fahrney Estate
 Division Mich. Producing District _____ Lease Wm. H. Fahrney Estate
 Acres _____ Lease No. _____ Elevation _____ Well No. 10 (Serial No. 199)
 Quadrangle C-3/2-NW-SW Sec. 1 Twp. 24 N Rge. 5 W Twp. Norwich
 Survey _____ County Missaukee State Michigan
 Operator Sun Oil Co. Map Norwich Township, Missaukee County
Sun Oil Company

Feet from North Line of Lease		" " East " " "	
<u>1650</u>	<u>1650</u>	"	"
<u>660</u>	<u>660</u>	"	"
<u>990</u>	<u>990</u>	"	"
Feet from North Line of Section		" " East " " "	
<u>660</u>	<u>660</u>	"	"
		"	"
		"	"

LEGEND

- Location
- ☀ Gas Well
- Oil Well
- ☀ Gas - Distillate Well
- ∅ or ○ Dry Hole
- Dry Showing Oil
- ☀ Dry Showing Gas
- ⊗ Abandoned Location
- ☀ or ☀ Abandoned Gas Well
- or ● Abandoned Oil Well
- or ○ Input Well

Poco.



Scale _____

Remarks: _____

Submitted by CB Civil Engineer Approved by _____ Division Manager
 Approved by _____ Vice-President - General Manager

ГОСЦАИОН ВЕРОВИ
 THE PURE OIL COMPANY

The Pure Oil Company
 COMPLETION RECORD OF WELLS DRILLED BY OTHER OPERATORS

Michigan Producing Division

Date January 30, 1946 No. 199
 State Mich. County Missaukee ~~State~~ Twp. Norwich Sec. 1 Twp. 24 N Rge. 5 W
 Well No. 10 (Serial No.) ~~Country No.~~ 199 Farm Wm. H. Fahrney Est. Acres
 Operator Sun Oil Company Information secured ~~from~~ ^{By} Scouting Department
 Date well started 12-2-45 Date well completed 1-3-46 Elevation 1254.5

PRODUCTION BOARD

1st 24 hours natural None reported.
 2nd 24 hours natural
 Date of shot No. of quarts From To From to
 Date of acid 1-18-46 No. of gallons 4000
 1st 24 hours after acid ~~shot~~ Flowed 60 Barrels.
 2nd 24 hours after acid shot OIL WELL

FORMATION AND CASING RECORD

Formation	Top	Bottom	Top Pay	Bottom Pay	Remarks	Casing	
						Size	Set at
Marshall	655	(+600)				10"	55
Traverse Lime	2453	(-1198)				5-3/16"	4376
Dundee	3139	S.L.M.	(-1884)				
Detroit River	?		4382	4387	(-3127)		
			4394	4405	(-3139)		
Total Depth		4500	(-3245)				

Remarks

Signed D. C. Shackelford