



Western Michigan University
ScholarWorks at WMU

Legacy Scout Tickets from Pure Oil Company

8-20-2021

MGRRE_PureOilScoutTickets_Horner, F S_31_21113121040000

MGRRE

Western Michigan University

Follow this and additional works at: <https://scholarworks.wmich.edu/pure>

 Part of the Geology Commons

WMU ScholarWorks Citation

MGRRE, "MGRRE_PureOilScoutTickets_Horner, F S_31_21113121040000" (2021). *Legacy Scout Tickets from Pure Oil Company*. 6000.

<https://scholarworks.wmich.edu/pure/6000>

This Document is brought to you for free and open access via ScholarWorks at WMU. It has been accepted for inclusion in Legacy Scout Tickets from Pure Oil Company by an authorized administrator of ScholarWorks at WMU. See the National Digital Catalogue - Science Base Catalogue for more collections submitted by MGRRE.



MGRRE_PureOilScoutTickets_Horner, F S_31_21113121040000

API 21113121040000

Permit Number 12104

Lease Name Horner, F S

Well Number 31

County Missaukee

Township 24N

Range 05W

Section 2

2021 DEQ or Pure co_name Merit Energy Company

Pure Number 202

Latitude 44.4992168

Longitude -84.8741346

THE PURE OIL COMPANY

LOCATION REPORT

Date January 30, 1946

A.F.E. No. _____

Division Mich. Producing District _____

Lease F. S. Horner
F. S. Horner, Tr.

Acres _____ Lease No. _____ Elevation _____ Well No. 31 (Serial No. 202)

Quadrangle C S 1/2 NE SE Sec. 2 Twp. 24 N Rge. 5 W ~~X Dist.~~ Norwich
Norwich

Survey _____ County Missaukee State Michigan

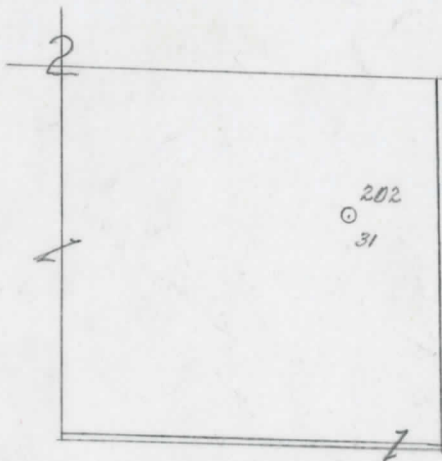
Operator Sun Oil Co.
Sun Oil Company Map Norwich Township, Missaukee County

		Feet from North Line of Lease			
<u>330</u>	<u>330</u>	" " East	" " "		
<u>990</u>	<u>990</u>	" " South	" " "		
		" " West	" " "		
<u>990</u>	<u>990</u>	Feet from North Line of Section	<u>1/4</u>		
<u>660</u>	<u>660</u>	" " East	" " "		
		" " South	" " "		
		" " West	" " "		

LEGEND

- Location
- ☀ Gas Well
- Oil Well
- ☀ Gas - Distillate Well
- ∅ or ○ Dry Hole
- or ○ Dry Showing Oil
- ☀ Dry Showing Gas
- ⊖ Abandoned Location
- ☀ or ☀ Abandoned Gas Well
- or ● Abandoned Oil Well
- or ○ Input Well

Low



Scale _____

Remarks: _____

Submitted by CB Civil Engineer Approved by _____ Division Manager

Approved by _____ Vice-President - General Manager

Date APRIL 30 1946

LOCATION RECORD

V.E.E. NO.

THE PURE OIL COMPANY

COMPLETION RECORD OF WELLS DRILLED BY OTHER OPERATORS

Michigan Producing Division

Date April 24, 1946 No. 202

State Michigan Co. Missaukee ~~Block~~ Twp. Norwich Sec. 2 Twp. 24 N Rge. 5 W

Well No. 31 Serial No. 202 Farm F. S. Homer, Tr. Acres

Operator Sun Oil Company

Date started 3-2-46 Date completed 4-7-46 Elevation 1264.2

PRODUCTION RECORD

1st 24 hours natural Filled up 300 ft.

Date of shot No. of quarts From To From To

Date of acid 4-10-46 No. of gallons 4000

1st 24 hours after acid Swabbed 40 Bbls.

Completed as: Oil Well Gas Well Dry Hole

FORMATION AND CASING RECORD

Formation	Top	Bottom	Top Pay	Bottom Pay	Remarks	Casing	
						Size	Set at
Marshall	688	(4576)				10"	515
Traverse Lime	2467	(-1203)				5-3/16"	4460
Dundee	3152	(-1888)					
Detroit River	3452	(-2188)					
Salt	3800	4219	(-2536)				
Anhydrite	?	4440	(-3176)		Small show gas 4475. (-3211)		
			(-3117)		Small show oil 4481-4487. (-3217)		
Total Depth	(-3251)	4515	4381	4389	See remarks below.		
			4404	4424	(-3140)		
			4438	4447	(-3174)		
			4502	4510	(-3238)		

Remarks Perforated: 4376-4390 with 40 holes; 4400-4427 with 79 holes; 4437-4450 with 41 holes.

Signed D. G. Shackelford