



Western Michigan University
ScholarWorks at WMU

Legacy Scout Tickets from Pure Oil Company

8-20-2021

MGRRE_PureOilScoutTickets_Jameson, A._1_21113092490000

MGRRE

Western Michigan University

Follow this and additional works at: <https://scholarworks.wmich.edu/pure>



Part of the Geology Commons

WMU ScholarWorks Citation

MGRRE, "MGRRE_PureOilScoutTickets_Jameson, A._1_21113092490000" (2021). *Legacy Scout Tickets from Pure Oil Company*. 6001.

<https://scholarworks.wmich.edu/pure/6001>

This Document is brought to you for free and open access via ScholarWorks at WMU. It has been accepted for inclusion in Legacy Scout Tickets from Pure Oil Company by an authorized administrator of ScholarWorks at WMU. See the National Digital Catalogue - Science Base Catalogue for more collections submitted by MGRRE.



MGRRE_PureOilScoutTickets_Jameson, A._1_21113092490000

API 21113092490000

Permit Number 9249

Lease Name Jameson, A.

Well Number 1

County Missaukee

Township 22N

Range 07W

Section 31

2021 DEQ or Pure co_name McClure Drilling Company The

Pure Number 204

Latitude 44.26529

Longitude -85.2114

THE PURE OIL COMPANY

LOCATION REPORT

Date March 6, 1946

A.F.E. No. _____

Division Mich. Producing District _____

Lease A. Jameson
A. Jameson

Acres _____ Lease No. _____ Elevation _____ Well No. 1 (Serial No. 204)

Quadrangle NE-NW-NW Sec. 31 Twp. 22 N Rge. 7 W Dist. Reeder
NE NW NW 31 22 N 7 W Reeder

Survey _____ County Missaukee State Michigan

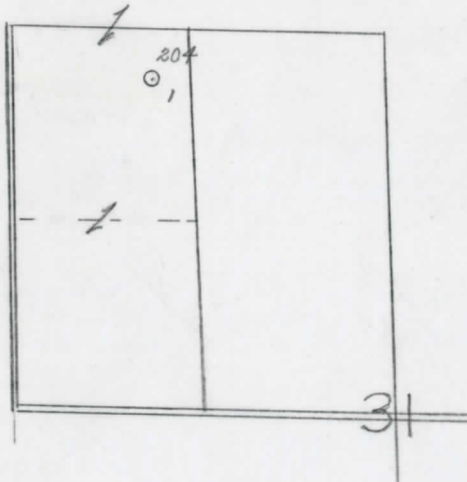
Operator McClure Drilling Co. Map Reeder Township, Missaukee County
McClure Drilling Company

<u>380</u>	<u>380</u>	Feet from North Line of Lease			
<u>330</u>	<u>330</u>	" " East " " "			
		" " South " " "			
		" " West " " "			
<u>380</u>	<u>380</u>	Feet from North Line of Section			
		" " East " " "			
		" " South " " "			
<u>990</u>	<u>990</u>	" " West " " "			

LEGEND

- Location
- ☀ Gas Well
- Oil Well
- ☀ Gas - Distillate Well
- ∅ or ○ Dry Hole
- Dry Showing Oil
- ☀ Dry Showing Gas
- ⊗ Abandoned Location
- ☀ or ☀ Abandoned Gas Well
- or ● Abandoned Oil Well
- or ○ Input Well

micro



Scale _____

Remarks: _____

Submitted by CB Civil Engineer

Approved by _____ Division Manager

Approved by _____ Vice-President - General Manager

