



Western Michigan University  
ScholarWorks at WMU

---

Legacy Scout Tickets from Pure Oil Company

---

8-20-2021

**MGRRE\_PureOilScoutTickets\_Horner, F S\_33\_21113122690000**

MGRRE

*Western Michigan University*

Follow this and additional works at: <https://scholarworks.wmich.edu/pure>



Part of the Geology Commons

---

#### **WMU ScholarWorks Citation**

MGRRE, "MGRRE\_PureOilScoutTickets\_Horner, F S\_33\_21113122690000" (2021). *Legacy Scout Tickets from Pure Oil Company*. 6004.

<https://scholarworks.wmich.edu/pure/6004>

This Document is brought to you for free and open access via ScholarWorks at WMU. It has been accepted for inclusion in Legacy Scout Tickets from Pure Oil Company by an authorized administrator of ScholarWorks at WMU. See the National Digital Catalogue - Science Base Catalogue for more collections submitted by MGRRE.



---

**MGRRE\_PureOilScoutTickets\_Horner, F S\_33\_21113122690000**

API 21113122690000

Permit Number 12269

Lease Name Horner, F S

Well Number 33

County Missaukee

Township 24N

Range 05W

Section 21

2021 DEQ or Pure co\_name Oryx Energy Company

Pure Number 210

Latitude 44.45208

Longitude -84.91806

THE PURE OIL COMPANY

LOCATION REPORT

Date May 1, 1946

A.F.E. No. \_\_\_\_\_

Division Mich. Producing District \_\_\_\_\_

F. S. Horner  
Lease F. S. Horner

Acres \_\_\_\_\_ Lease No. \_\_\_\_\_ Elevation \_\_\_\_\_ Well No. 33 (Serial No. 210)

Quadrangle C-5/2-SE-SE Sec. 21 Twp. 24 N Rge. 5 W Twp. Norwich  
C S 2 SE SE Missaukee Norwich

Survey \_\_\_\_\_ County Missaukee State Michigan

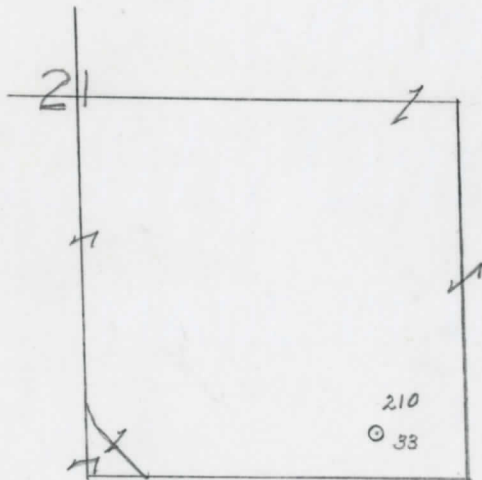
Operator Sun Oil Co. Map Norwich Township, Missaukee County  
Sun Oil Company

10230	10230	Feet from North Line of Lease
		" " East " " "
		" " South " " "
9900	9900	" " West " " "
		Feet from North Line of Section
660	660	" " East " <u>1/4</u> "
330	330	" " South " " "
		" " West " " "

LEGEND

- Location
- ☀ Gas Well
- Oil Well
- ☀ Gas - Distillate Well
- ⊘ or ○ Dry Hole
- or ● Dry Showing Oil
- ☀ Dry Showing Gas
- ⊘ Abandoned Location
- ☀ or ☀ Abandoned Gas Well
- or ● Abandoned Oil Well
- or ○ Input Well

*Low*



Scale \_\_\_\_\_

Remarks: \_\_\_\_\_

Submitted by CB \_\_\_\_\_  
Civil Engineer

Approved by \_\_\_\_\_  
Division Manager

Approved by \_\_\_\_\_  
Vice-President - General Manager

COMPLETION RECORD OF WELLS DRILLED BY OTHER OPERATORS

Michigan Producing Division

Date June 12, 1946 No. 210
State Mich. Co. Missaukee Dist. Norwich Twp. Norwich Sec. 21 Twp. 24 N Rge. 5 W
Well No. 33 Serial No. 210 Farm F. S. Horner Acres
Operator Sun Oil Company
Date started 5-26-46 Date completed 6-10-46 Elevation 1170.5

PRODUCTION RECORD

1st 24 hours natural
Date of shot No. of quarts From To From To
Date of acid No. of gallons shot
1st 24 hours after acid
Completed as: Oil Well Gas Well Dry Hole X

FORMATION AND CASING RECORD

Table with 7 columns: Formation, Top, Bottom, Top Pay, Bottom Pay, Remarks, Casing (Size, Set at). Rows include Traverse Form., Traverse Lime, Dundee, and Total Depth.

Remarks

Signed D. G. Shackelford