



Western Michigan University  
ScholarWorks at WMU

---

Legacy Scout Tickets from Pure Oil Company

---

8-20-2021

## MGRRE\_PureOilScoutTickets\_State Clam Union\_1\_21113128360000

MGRRE

*Western Michigan University*

Follow this and additional works at: <https://scholarworks.wmich.edu/pure>



Part of the Geology Commons

---

### WMU ScholarWorks Citation

MGRRE, "MGRRE\_PureOilScoutTickets\_State Clam Union\_1\_21113128360000" (2021). *Legacy Scout Tickets from Pure Oil Company*. 6010.

<https://scholarworks.wmich.edu/pure/6010>

This Document is brought to you for free and open access via ScholarWorks at WMU. It has been accepted for inclusion in Legacy Scout Tickets from Pure Oil Company by an authorized administrator of ScholarWorks at WMU. See the National Digital Catalogue - Science Base Catalogue for more collections submitted by MGRRE.



---

**MGRRE\_PureOilScoutTickets\_State Clam Union\_1\_21113128360000**

API 21113128360000

Permit Number 12836

Lease Name State Clam Union

Well Number 1

County Missaukee

Township 21N

Range 06W

Section 1

2021 DEQ or Pure co\_name Russell, T. R.

Pure Number 218

Latitude 44.23943

Longitude -84.99205

SERIAL NO. 218

STATE Michigan PSH MISSAUKEE CO.

OPERATOR Union Development Co.

FARM State-Clam Union WELL NO. 1

TWP. SURVEY Clam Union S. 1 T. 21N R. 6W

LOC. SW NW SW

WILDCAT  FIELD  FIELD NAME

MAP NO. CO-ORD. ELEV.

STATUS Operator's name corrected from:

T.R. Russell

New operator to deepen Dundee dry hole to test Richfield formation at approx. 5300'

NORTH

Dry Hole			1		
218					
φ 5252'					
1					

DATE 7-5-55 SCOUT JEC

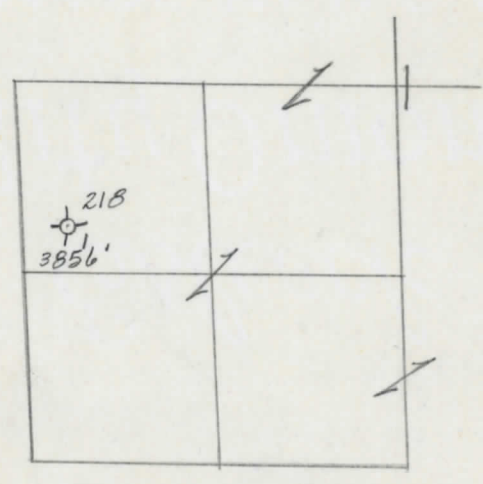
Date December 11, 1946 LOCATION REPORT A.F.E. No. State-Clam Union  
 Division Mich. Producing District \_\_\_\_\_ Lease State-Clam Union  
 Acres \_\_\_\_\_ Lease No. \_\_\_\_\_ Elevation \_\_\_\_\_ Well No. 1 (Serial No. 218)  
 Quadrangle SW NW SW Sec. 1 Twp. 21 N Rge. 6 W Twp. Clam Union  
 Survey \_\_\_\_\_ County Missaukee State Michigan  
 Operator T. R. Russell Map Clam Union Township, Missaukee County

		Feet from North Line of Lease
		" " East " " "
<u>330</u>	<u>330</u>	" " South " " "
<u>330</u>	<u>330</u>	" " West " " "
<u>990</u>	<u>990</u>	Feet from North Line of Section
		" " East " " "
		" " South " " "
<u>330</u>	<u>330</u>	" " West " " "

**LEGEND**

- Location
- ☀ Gas Well
- Oil Well
- ☀ Gas - Distillate Well
- ∅ or ○ Dry Hole
- Dry Showing Oil
- ☀ Dry Showing Gas
- ⊗ Abandoned Location
- ☀ or ☀ Abandoned Gas Well
- or ● Abandoned Oil Well
- or ○ Input Well

*Low*



Remarks: \_\_\_\_\_ Scale \_\_\_\_\_

Submitted by CB Civil Engineer Approved by \_\_\_\_\_ Division Manager  
 Approved by \_\_\_\_\_ Vice-President - General Manager