



Western Michigan University
ScholarWorks at WMU

Legacy Scout Tickets from Pure Oil Company

8-20-2021

**MGRRE_PureOilScoutTickets_Roe, Frank (Orig Cletus
Dusseau)_1_21115005849000**

MGRRE
Western Michigan University

Follow this and additional works at: <https://scholarworks.wmich.edu/pure>



Part of the Geology Commons

WMU ScholarWorks Citation

MGRRE, "MGRRE_PureOilScoutTickets_Roe, Frank (Orig Cletus Dusseau)_1_21115005849000" (2021).
Legacy Scout Tickets from Pure Oil Company. 6011.
<https://scholarworks.wmich.edu/pure/6011>

This Document is brought to you for free and open access via ScholarWorks at WMU. It has been accepted for inclusion in Legacy Scout Tickets from Pure Oil Company by an authorized administrator of ScholarWorks at WMU. See the National Digital Catalogue - Science Base Catalogue for more collections submitted by MGRRE.



**MGRRE_PureOilScoutTickets_Roe, Frank (Orig Cletus
Dusseau)_1_21115005849000**

API 21115005849000

Permit Number 584

Lease Name Roe, Frank (Orig Cletus Dusseau)

Well Number 1

County Monroe

Township 06S

Range 06E

Section 19

2021 DEQ or Pure co_name Monroe Oil and Gas Company (of Petersburg)

Pure Number 1

Latitude 41.944481

Longitude -83.7602335

Connected Location Report

THE PURE OIL COMPANY

DATE April 17th 1928

LOCATION REPORT

No. 1

STATE Michigan COUNTY Monroe DIST. Dundee SEC. 19 TOWN 6S RANGE 6E

WELL No. 1 (SERIAL No. 1) FARM (Frank Roe) Cletus Dusseau 96 ACRES

NAME OF STREAM OR WATERS _____ QUADRANGLE _____

OPERATOR Deerfield Oil Co MAP Scale 4 1/4 inches 1 Mile

Feet from North Line of Farm

400 " " East " " "
250 " " South " " "
 " " West " " "

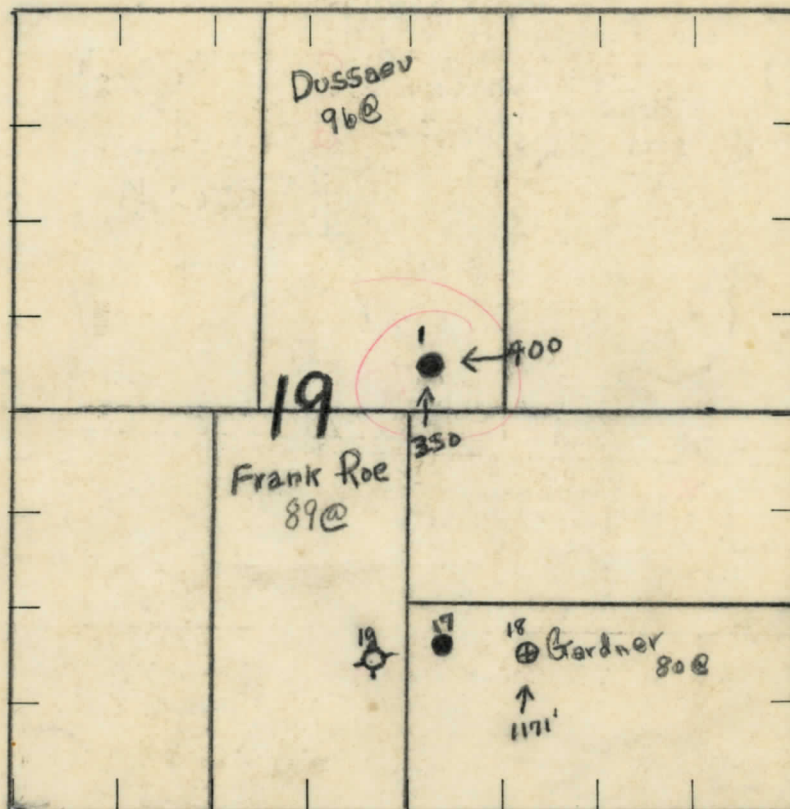
Feet from North Line of Section

" " East " " "
 " " South " " "
 " " West " " "

LEGEND

- | | |
|------------------|----------------------|
| ○ LOCATION | ✧ DRY HOLE |
| ① RIG | ✦ DRY SHOWING OIL |
| ⊕ DRILLING | ✧ DRY SHOWING GAS |
| ⊙ GAS WELL | ✧ ABANDONED LOCATION |
| ● OIL WELL | ✧ ABANDONED GAS WELL |
| ⬮ SMALL OIL WELL | ✧ ABANDONED OIL WELL |

NOTE: Below make tracing from map (when no map is obtainable make sketch), showing farm, center of section, this location with measurements and also wells, dry holes, or other locations in the vicinity of this location. Make copy to keep for reference and send original to Columbus office.



REMARKS:

SIGNED

Superintendent or Foreman.

STATE Michigan COUNTY Monroe DIST. Durand SEC. 19 TOWN 6S RANGE 6E
 WELL No. 1 (SERIAL No. 19) FARM Cletus Duesco ACRES 96
 NAME OF STREAM OR WATERS _____ QUADRANGLE _____
 OPERATOR Deerfield Oil & Gas Co MAP Stamp

Feet from North Line of Farm

" " East " " "

" " South " " "

" " West " " "

Feet from North Line of Section

" " East " " "

" " South " " "

" " West " " "

LEGEND

○ LOCATION

① RIG

⊕ DRILLING

⊗ GAS WELL

● OIL WELL

⬮ SMALL OIL WELL

⬮ DRY HOLE

⬮ DRY SHOWING OIL

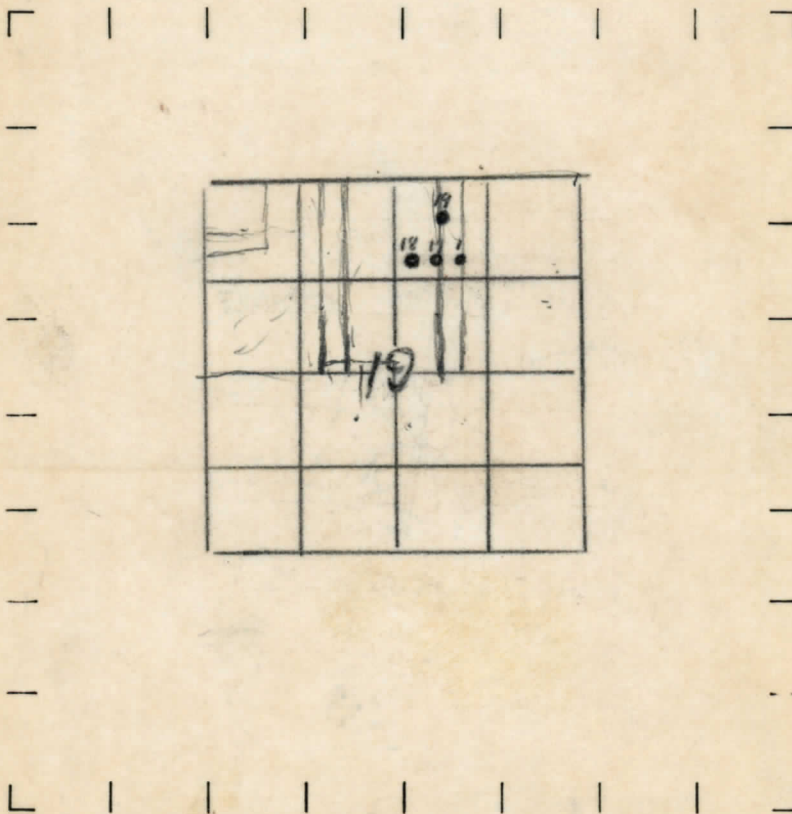
⬮ DRY SHOWING GAS

⬮ ABANDONED LOCATION

⬮ ABANDONED GAS WELL

⬮ ABANDONED OIL WELL

NOTE: Below make tracing from map, (when no map is obtainable make sketch) showing farm, center of section, this location with measurements and also wells, dry holes, or other locations in the vicinity of this location. Make copy to keep for reference and send original to Chicago office.



REMARKS:

SIGNED

Superintendent or Foreman.

Saginaw Michigan Special DIVISION

DATE March 24th 1928.

COMPLETION RECORD

No. 118

STATE Michigan COUNTY Monroe DIST. Dundee TWP. 19 SEC. 19 TOWN 6 S RANGE 6 E

WELL No. 1 (SERIAL No. 1) Farm Roe ACRES

NAME OF STREAM OR WATERS..... QUADRANGLE.....

OPERATOR Deerfield Oil & Gas Co. MAP Stamp.

LOCATION REPORT SENT IN (DATE) March 24th 1938

WELL STARTED (DATE).....WELL COMPLETED (DATE).....

OIL WELL

GAS WELL

DRY HOLE

ABANDONED WELL

CROSS OUT THREE OF THE ABOVE

WELL RECORD

DATE OF SHOT..... NUMBER OF QUARTS.....

1st 24 HOURS PRODUCTION..... BARRELS OR FEET

2nd " " " " " "

3rd " " " " " "

4th " " " " " "

5th " " " " " " " "

SAND AND CASING

[illegible]

REMARKS.....Unable to get Log of this well and Pipe record.

NOTE:—MAKE COPY TO KEEP FOR REFERENCE AND SEND ORIGINAL TO COLUMBUS OFFICE. LIST MATERIAL CHARGEABLE TO WELL ON OTHER SIDE.

SIGNED.....

SUPT. OR FOREMAN.