



Western Michigan University
ScholarWorks at WMU

Legacy Scout Tickets from Pure Oil Company

8-20-2021

MGRRE_PureOilScoutTickets_Hansberger_1_21115004669000

MGRRE

Western Michigan University

Follow this and additional works at: <https://scholarworks.wmich.edu/pure>



Part of the Geology Commons

WMU ScholarWorks Citation

MGRRE, "MGRRE_PureOilScoutTickets_Hansberger_1_21115004669000" (2021). *Legacy Scout Tickets from Pure Oil Company*. 6012.

<https://scholarworks.wmich.edu/pure/6012>

This Document is brought to you for free and open access via ScholarWorks at WMU. It has been accepted for inclusion in Legacy Scout Tickets from Pure Oil Company by an authorized administrator of ScholarWorks at WMU. See the National Digital Catalogue - Science Base Catalogue for more collections submitted by MGRRE.



MGRRE_PureOilScoutTickets_Hansberger_1_21115004669000

API 21115004669000

Permit Number 466

Lease Name Hansberger

Well Number 1

County Monroe

Township 07S

Range 08E

Section 5

2021 DEQ or Pure co_name Strasburg Oil and Gas Company

Pure Number 4

Latitude 41.9029545

Longitude -83.5049614

Corrected Location Report

THE PURE OIL COMPANY

DATE ~~July~~ June 2nd 1928

LOCATION REPORT

No. 4

STATE Michigan COUNTY Monroe DIST. Raisinville SEC. PC 408 TOWN 6S RANGE 8E
TWP. Raisinville PREC.

WELL No. 1 (SERIAL No. 4) FARM Hamberger ACRES

NAME OF STREAM OR WATERS QUADRANGLE

OPERATOR MAP

Feet from North Line of Farm

" " East " " "

" " South " " "

" " West " " "

Feet from North Line of Section

" " East " " "

" " South " " "

" " West " " "

LEGEND

○ LOCATION

① RIG

⊕ DRILLING

⊗ GAS WELL

● OIL WELL

⦿ SMALL OIL WELL

⊖ DRY HOLE

⦿ DRY SHOWING OIL

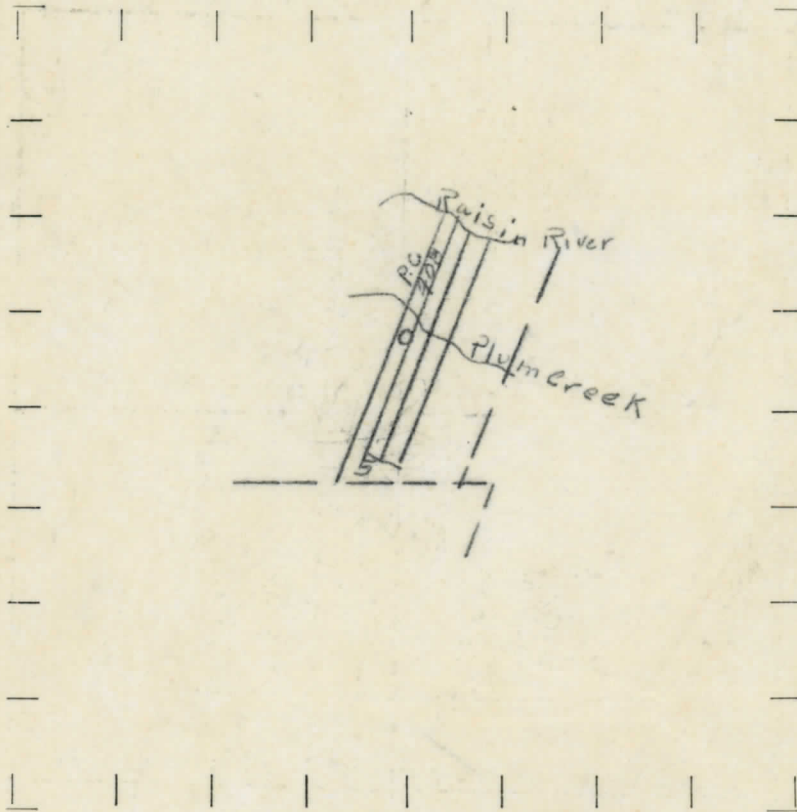
⊗ DRY SHOWING GAS

⊖ ABANDONED LOCATION

⊗ ABANDONED GAS WELL

⦿ ABANDONED OIL WELL

NOTE: Below make tracing from map (when no map is obtainable make sketch), showing farm, center of section, this location with measurements and also wells, dry holes, or other locations in the vicinity of this location. Make copy to keep for reference and send original to Columbus office.



REMARKS:

SIGNED

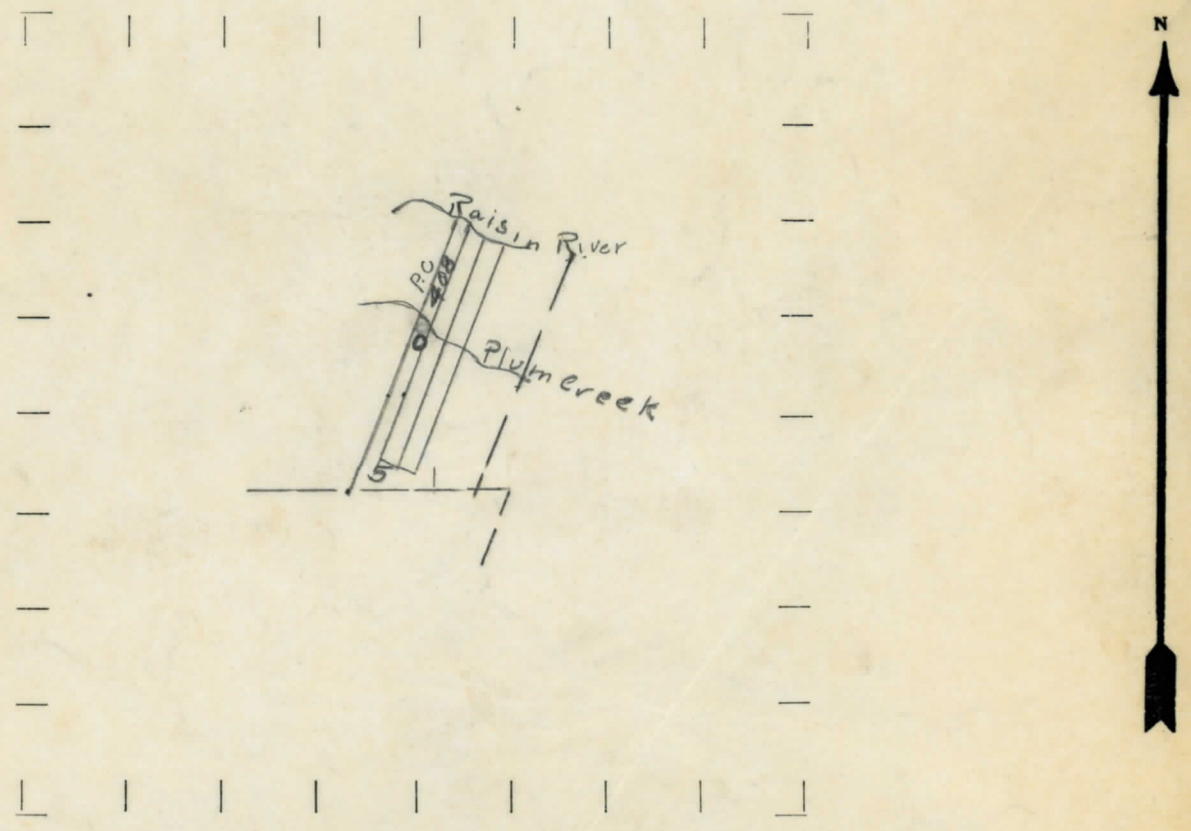
Superintendent or Foreman.

STATE Mich COUNTY Monroe DIST. Raisinville SEC. PC. 408 TOWN 6S RANGE 8E
 WELL No. _____ (SERIAL No. 4) FARM Hausberger ACRES _____
 NAME OF STREAM OR WATERS _____ QUADRANGLE _____
 OPERATOR _____ MAP _____

Feet from North Line of Farm
 _____ " " East " " "
 _____ " " South " " "
 _____ " " West " " "
 Feet from North Line of Section
 _____ " " East " " "
 _____ " " South " " "
 _____ " " West " " "

- LEGEND**
- LOCATION
 - ① RIG
 - ⊕ DRILLING
 - ☼ GAS WELL
 - OIL WELL
 - ⦿ SMALL OIL WELL
 - ⊕ DRY HOLE
 - ⦿ DRY SHOWING OIL
 - ☼ DRY SHOWING GAS
 - ⊕ ABANDONED LOCATION
 - ☼ ABANDONED GAS WELL
 - ⦿ ABANDONED OIL WELL

NOTE: Below make tracing from map (when no map is obtainable make sketch), showing farm, center of section, this location with measurements and also wells, dry holes, or other locations in the vicinity of this location. Make copy to keep for reference and send original to Columbus office.



REMARKS:

SIGNED _____
 Superintendent or Foreman.