



Western Michigan University
ScholarWorks at WMU

Legacy Scout Tickets from Pure Oil Company

8-20-2021

MGRRE_PureOilScoutTickets_Wilkerson, A._1_21115004689000

MGRRE

Western Michigan University

Follow this and additional works at: <https://scholarworks.wmich.edu/pure>



Part of the Geology Commons

WMU ScholarWorks Citation

MGRRE, "MGRRE_PureOilScoutTickets_Wilkerson, A._1_21115004689000" (2021). *Legacy Scout Tickets from Pure Oil Company*. 6014.

<https://scholarworks.wmich.edu/pure/6014>

This Document is brought to you for free and open access via ScholarWorks at WMU. It has been accepted for inclusion in Legacy Scout Tickets from Pure Oil Company by an authorized administrator of ScholarWorks at WMU. See the National Digital Catalogue - Science Base Catalogue for more collections submitted by MGRRE.



MGRRE_PureOilScoutTickets_Wilkerson, A._1_21115004689000

API 21115004689000

Permit Number 468

Lease Name Wilkerson, A.

Well Number 1

County Monroe

Township 06S

Range 06E

Section 25

2021 DEQ or Pure co_name Wilkerson, A.

Pure Number 11

Latitude 41.93181

Longitude -83.66198

THE PURE OIL COMPANY

DATE Sept 29th 1928

LOCATION REPORT

No. 11STATE Michigan COUNTY Monroe DIST. TWP. W. Pt. Dundee SEC. 25 TOWN 6S RANGE 6E
WELL No. 1 (SERIAL No. 11) FARM Wilkinson ACRES

NAME OF STREAM OR WATERS

QUADRANGLE

OPERATOR Wilkinson wellMAP W. Pt. Dundee Tp Monroe Co

Feet from North Line of Farm

" " East " " "

" " South " " "

" " West " " "

100 Feet from North Line of Section100 " " East " " "

" " South " " "

" " West " " "

LEGEND

O LOCATION

① RIG

⊕ DRILLING

⊗ GAS WELL

● OIL WELL

⬤ SMALL OIL WELL

⬢ DRY HOLE

⬢ DRY SHOWING OIL

⬢ DRY SHOWING GAS

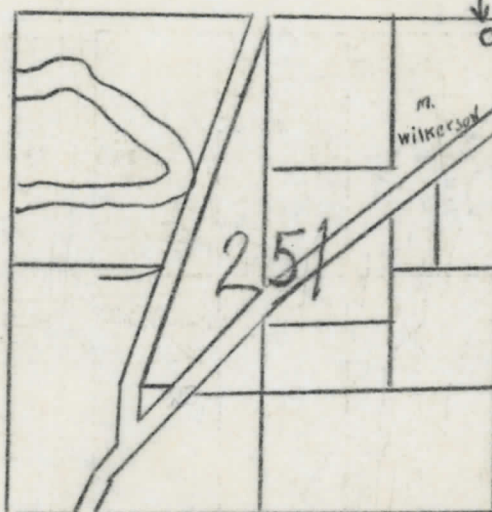
⬢ ABANDONED LOCATION

⬢ ABANDONED GAS WELL

⬢ ABANDONED OIL WELL

NOTE: Below make tracing from map (when no map is obtainable make sketch), showing farm, center of section, this location with measurements and also wells, dry holes, or other locations in the vicinity of this location. Make copy to keep for reference and send original to Columbus office.

Elevation
680



REMARKS:

Cancel our # 3 as # 3 and # 11 are the same.

SIGNED

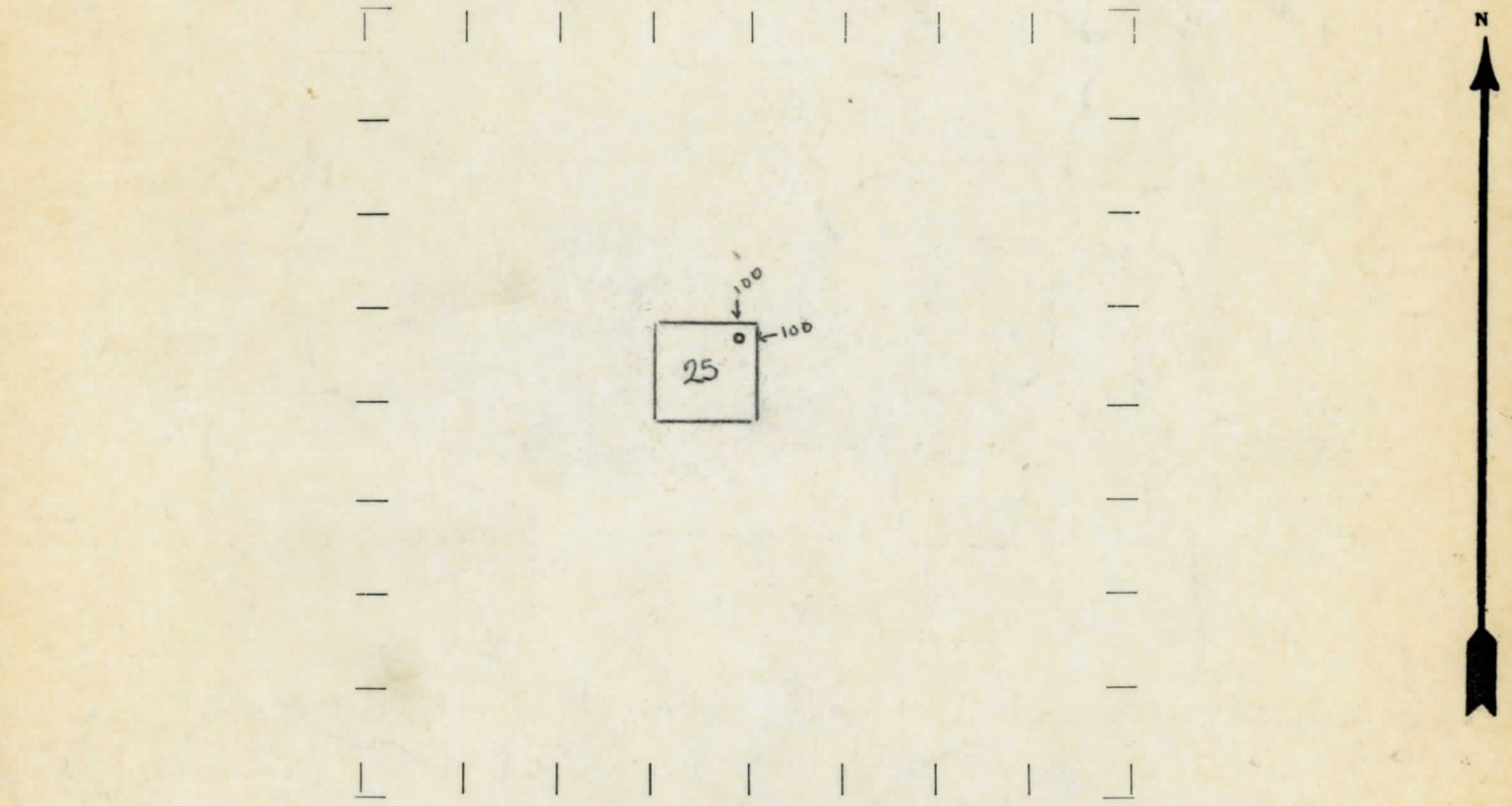
Superintendent or Foreman.

ELEV. 1000 CORNER 1000 LAB. 1000 SEC. 52 TOWN 6S RANGE 6E
 DATE June 16th 1928 LOCATION REPORT No. 11
 STATE Michigan COUNTY Monroe DIST. TWP. Dundee SEC. 25 TOWN 6S RANGE 6E
 WELL No. 1 (SERIAL No. 11) FARM Wilkinson ACRES _____
 NAME OF STREAM OR WATERS _____ QUADRANGLE _____
 OPERATOR _____ MAP 1/2" = 1 mile

_____ Feet from North Line of Farm
 _____ " " East " " "
 _____ " " South " " "
 _____ " " West " " "
100 Feet from North Line of Section
100 " " East " " "
 _____ " " South " " "
 _____ " " West " " "

- LEGEND**
- O LOCATION
 - ① RIG
 - ⊕ DRILLING
 - ⊗ GAS WELL
 - OIL WELL
 - ⦿ SMALL OIL WELL
 - ⊕ DRY HOLE
 - ⦿ DRY SHOWING OIL
 - ⊗ DRY SHOWING GAS
 - ⦿ ABANDONED LOCATION
 - ⊗ ABANDONED GAS WELL
 - ⦿ ABANDONED OIL WELL

NOTE: Below make tracing from map (when no map is obtainable make sketch), showing farm, center of section, this location with measurements and also wells, dry holes, or other locations in the vicinity of this location. Make copy to keep for reference and send original to Columbus office.



REMARKS:

SIGNED _____

Superintendent or Foreman.

WELL STARTED (DATE) _____ WELL COMPLETED (DATE) _____

SUPT. OR FOREMAN