



Western Michigan University
ScholarWorks at WMU

Legacy Scout Tickets from Pure Oil Company

8-20-2021

**MGRRE_PureOilScoutTickets_Gaertner, Hugo aka
Gardner_1_21115000529000**

MGRRE
Western Michigan University

Follow this and additional works at: <https://scholarworks.wmich.edu/pure>



Part of the Geology Commons

WMU ScholarWorks Citation

MGRRE, "MGRRE_PureOilScoutTickets_Gaertner, Hugo aka Gardner_1_21115000529000" (2021). *Legacy Scout Tickets from Pure Oil Company*. 6016.
<https://scholarworks.wmich.edu/pure/6016>

This Document is brought to you for free and open access via ScholarWorks at WMU. It has been accepted for inclusion in Legacy Scout Tickets from Pure Oil Company by an authorized administrator of ScholarWorks at WMU. See the National Digital Catalogue - Science Base Catalogue for more collections submitted by MGRRE.



MGRRE_PureOilScoutTickets_Gaertner, Hugo aka Gardner_1_21115000529000

API 21115000529000

Permit Number 52

Lease Name Gaertner, Hugo aka Gardner

Well Number 1

County Monroe

Township 06S

Range 06E

Section 19

2021 DEQ or Pure co_name A.V Oil and Gas Company

Pure Number 17

Latitude 41.93736

Longitude -83.75952

Corrected Location Report

THE PURE OIL COMPANY
THE PURE OIL COMPANY

DATE April 17th 1928 LOCATION REPORT No. 17
 STATE Michigan COUNTY Monroe DIST. TWP. Dundee SEC. 19 TOWN _____ RANGE _____
 WELL No. 1 (SERIAL No. 17) FARM Gardner 80 ACRES
 NAME OF STREAM OR WATERS _____ QUADRANGLE _____
 OPERATOR Deerfield Oil Co. MAP Scale 4 1/4 inches = 1 Mile

_____ Feet from North Line of Farm

_____ " " East " " "

_____ " " South " " "

_____ " " West " " "

_____ Feet from North Line of Section

_____ " " East " " "

_____ " " South " " "

_____ " " West " " "

LEGEND

○ LOCATION

① RIG

⊕ DRILLING

⊗ GAS WELL

● OIL WELL

⬮ SMALL OIL WELL

⬮ DRY HOLE

⬮ DRY SHOWING OIL

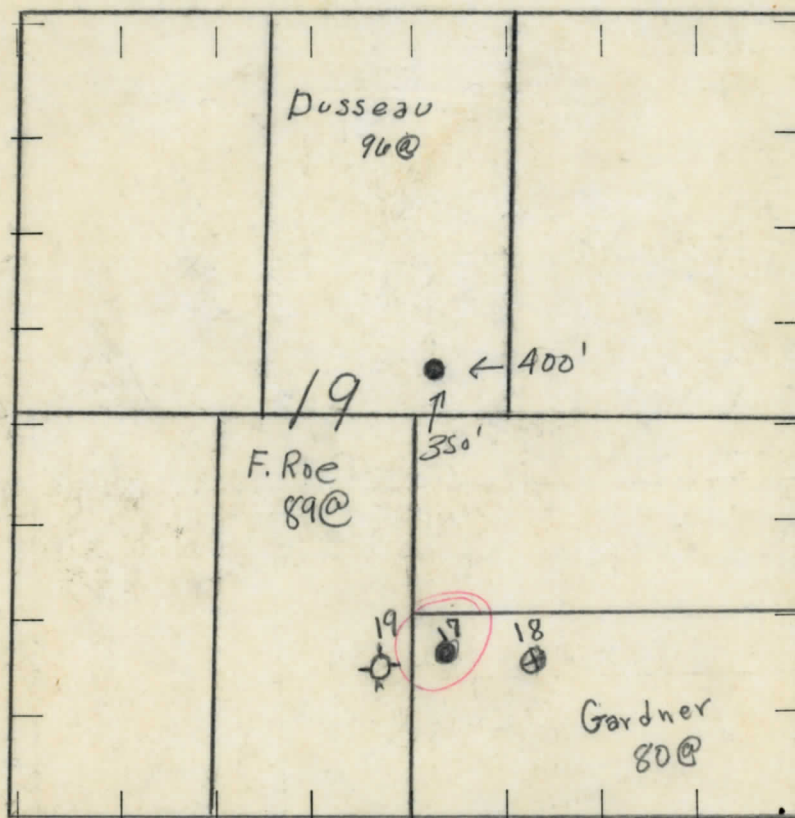
⬮ DRY SHOWING GAS

⬮ ABANDONED LOCATION

⬮ ABANDONED GAS WELL

⬮ ABANDONED OIL WELL

NOTE: Below make tracing from map (when no map is obtainable make sketch), showing farm, center of section, this location with measurements and also wells, dry holes, or other locations in the vicinity of this location. Make copy to keep for reference and send original to Columbus office.



REMARKS:

Number 17 is 400 feet west of Number 18

SIGNED

W. A. Wickers.
Superintendent or Foreman.

THE BOOK OF COMMONS

COMPLETION RECORD

No. 17

DATE March .24th. 1928.

STATE Michigan COUNTY Monroe DIST. TWP. Dundee SEC. 19 TOWN 6 S RANGE 6 E
PREC

WELL No. 1 (SERIAL No. 17) Farm Gardner ACRES

NAME OF STREAM OR WATERS.....QUADRANGLE

OPERATOR Deerfield Oil & Gas Co MAP Stamp.

LOCATION REPORT SENT IN (DATE) March 24th 1928

WELL STARTED (DATE) 1923 WELL COMPLETED (DATE) 1923

OIL WELL

GAS WELL

~~XXXXXX~~ DRY HOLE ~~XXXXXX~~

ABANDONED WELL X

**CROSS OUT THREE OF THE ABOVE
WELL RECORD**

DATE OF SHOT 1923 NUMBER OF QUARTS. ?

1st 24 HOURS PRODUCTION.....				7	BARRELS OR FEET		
2nd	"	"	"	7	"	"	"
3rd	"	"	"	7	"	"	"
4th	"	"	"	7	"	"	"
5th	"	"	"	7	"	"	"

SAND AND CASING

[illegible]

REMARKS. Unable to get log.

NOTE:—MAKE COPY TO KEEP FOR REFERENCE AND SEND ORIGINAL TO COLUMBUS OFFICE. LIST MATERIAL CHARGEABLE TO WELL ON OTHER SIDE.

SIGNED

SUPT. OR FOREMAN.

LIST OF MATERIAL CHARGEABLE TO WELL No.

DATE April 17th 1928 LOCATION REPORT No. 17
 STATE Michigan COUNTY Monroe DIST. TWP. Dundee SEC. 19 TOWN _____ RANGE _____
 WELL No. 1 (SERIAL No. 17) FARM Gardner _____ ACRES 80
 NAME OF STREAM OR WATERS _____ QUADRANGLE _____
 OPERATOR Deerfield Oil Co MAP Scale 4 1/4 inches = 1 Mile

Feet from North Line of Farm

" " East " " "

" " South " " "

" " West " " "

Feet from North Line of Section

" " East " " "

" " South " " "

" " West " " "

LEGEND

○ LOCATION

① RIG

⊕ DRILLING

⊗ GAS WELL

● OIL WELL

⦿ SMALL OIL WELL

⊕ DRY HOLE

⦿ DRY SHOWING OIL

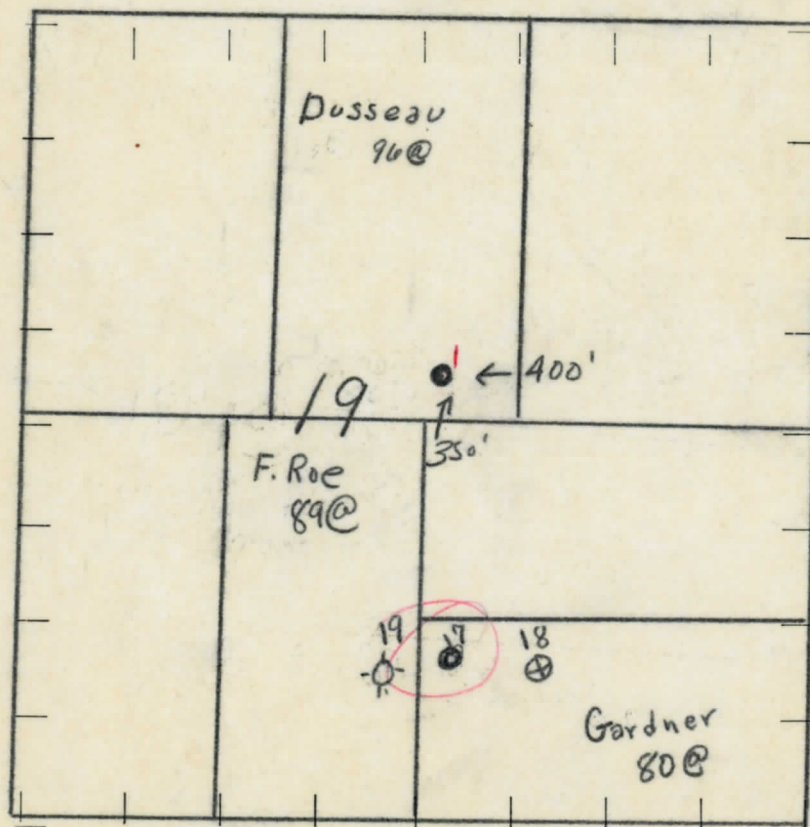
⊕ DRY SHOWING GAS

⦿ ABANDONED LOCATION

⊗ ABANDONED GAS WELL

⦿ ABANDONED OIL WELL

NOTE: Below make tracing from map (when no map is obtainable make sketch), showing farm, center of section, this location with measurements and also wells, dry holes, or other locations in the vicinity of this location. Make copy to keep for reference and send original to Columbus office.



REMARKS:

Number 17 is 400 feet west of Number 18

SIGNED

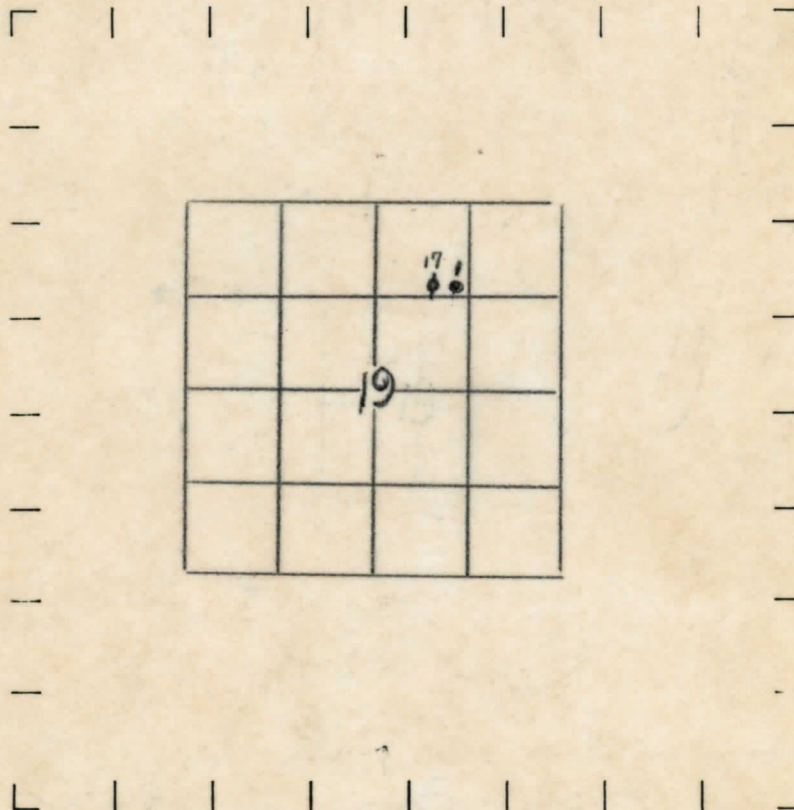
Superintendent or Foreman.

Feet from North Line of Farm
 " " East " " "
 " " South " " "
 " " West " " "
 Feet from North Line of Section
 " " East " " "
 " " South " " "
 " " West " " "

LEGEND

- | | |
|------------------|----------------------|
| ○ LOCATION | ⬢ DRY HOLE |
| ① RIG | ⬢ DRY SHOWING OIL |
| ⊕ DRILLING | ⬢ DRY SHOWING GAS |
| ⊙ GAS WELL | ⬢ ABANDONED LOCATION |
| ● OIL WELL | ⬢ ABANDONED GAS WELL |
| ⬢ SMALL OIL WELL | ⬢ ABANDONED OIL WELL |

NOTE: Below make tracing from map, (when no map is obtainable make sketch) showing farm, center of section, this location with measurements and also wells, dry holes, or other locations in the vicinity of this location. Make copy to keep for reference and send original to Chicago office.



REMARKS:

SIGNED

Superintendent or Foreman.

No. 17

SUPT. OR FOREMAN.

LIST OF MATERIAL CHARGEABLE TO WELL NO.

Signed S. H. Keel