



Western Michigan University
ScholarWorks at WMU

Legacy Scout Tickets from Pure Oil Company

8-20-2021

**MGRRE_PureOilScoutTickets_Gaertner, Hugo aka
Gardner_2_21115000160000**

MGRRE
Western Michigan University

Follow this and additional works at: <https://scholarworks.wmich.edu/pure>



Part of the Geology Commons

WMU ScholarWorks Citation

MGRRE, "MGRRE_PureOilScoutTickets_Gaertner, Hugo aka Gardner_2_21115000160000" (2021). *Legacy Scout Tickets from Pure Oil Company*. 6017.
<https://scholarworks.wmich.edu/pure/6017>

This Document is brought to you for free and open access via ScholarWorks at WMU. It has been accepted for inclusion in Legacy Scout Tickets from Pure Oil Company by an authorized administrator of ScholarWorks at WMU. See the National Digital Catalogue - Science Base Catalogue for more collections submitted by MGRRE.



MGRRE_PureOilScoutTickets_Gaertner, Hugo aka Gardner_2_21115000160000

API 21115000160000

Permit Number 16

Lease Name Gaertner, Hugo aka Gardner

Well Number 2

County Monroe

Township 06S

Range 06E

Section 19

2021 DEQ or Pure co_name Deerfield Oil Producing Company

Pure Number 18

Latitude 41.94057

Longitude -83.75925

Corrected Location Report

State
well X

DATE April 17th 1927

THE PURE OIL COMPANY

LOCATION REPORT

No. 18

STATE Michigan COUNTY Monroe DIST. Dundee SEC. 19 TOWN 6S RANGE 6E

WELL No. 2 (SERIAL No. 18) FARM Gardner 80 ACRES

NAME OF STREAM OR WATERS QUADRANGLE

OPERATOR Deerfield Oil Co MAP Scale 4 1/4 inches 1 mile

150 Feet from North Line of Farm

1171 " " East " " "

" " South " " "

+ " " West " " "

Feet from North Line of Section

" " East " " "

" " South " " "

" " West " " "

LEGEND

O LOCATION

① RIG

⊕ DRILLING

⊙ GAS WELL

● OIL WELL

⊙ SMALL OIL WELL

⊙ DRY HOLE

⊙ DRY SHOWING OIL

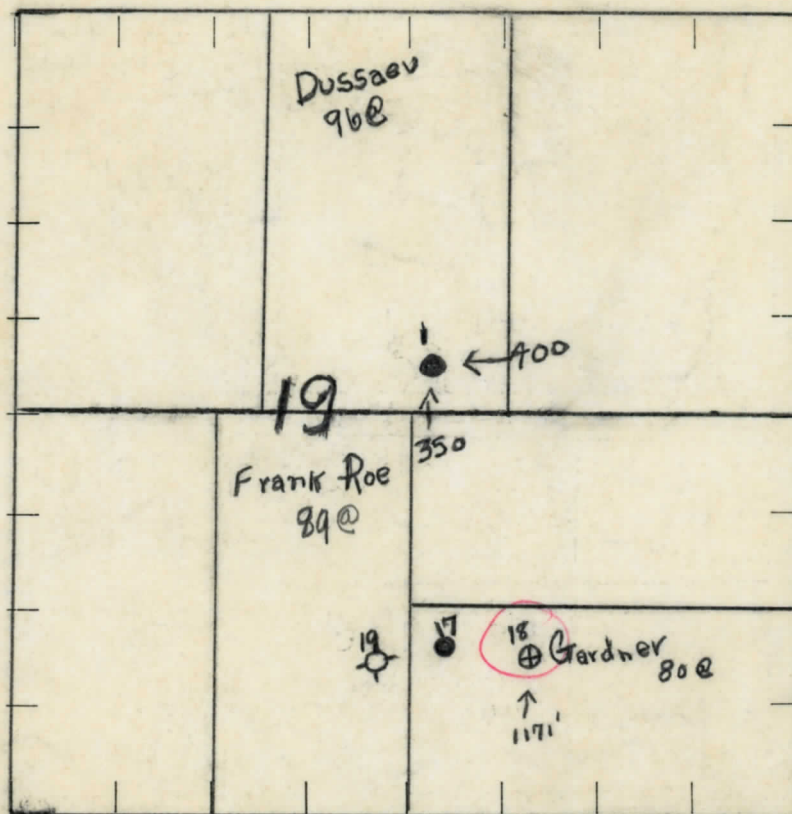
⊙ DRY SHOWING GAS

⊙ ABANDONED LOCATION

⊙ ABANDONED GAS WELL

⊙ ABANDONED OIL WELL

NOTE: Below make tracing from map (when no map is obtainable make sketch), showing farm, center of section, this location with measurements and also wells, dry holes, or other locations in the vicinity of this location. Make copy to keep for reference and send original to Columbus office.



REMARKS:

SIGNED

W. W. Wickers
Superintendent or Foreman.

DATE April 17th 1927

THE PURE OIL COMPANY

No. 18

DATE April 17th 1927

LOCATION REPORT

STATE Michigan COUNTY Monroe DIST. TWP. Dundee SEC. 19 TOWN 65 RANGE 65

WELL No. 2 (SERIAL No. 18) FARM Gardner ACRES 80

NAME OF STREAM OR WATERS _____ QUADRANGLE _____

OPERATOR Deerfield Oil Co MAP Scale 4 1/4 inches 1 mile

150 Feet from North Line of Farm

1171 " " East " " "

" " South " " "

+ " " West " " "

Feet from North Line of Section

" " East " " "

" " South " " "

" " West " " "

LEGEND

○ LOCATION

① RIG

⊕ DRILLING

⊗ GAS WELL

● OIL WELL

⊙ SMALL OIL WELL

⊕ DRY HOLE

⊕ DRY SHOWING OIL

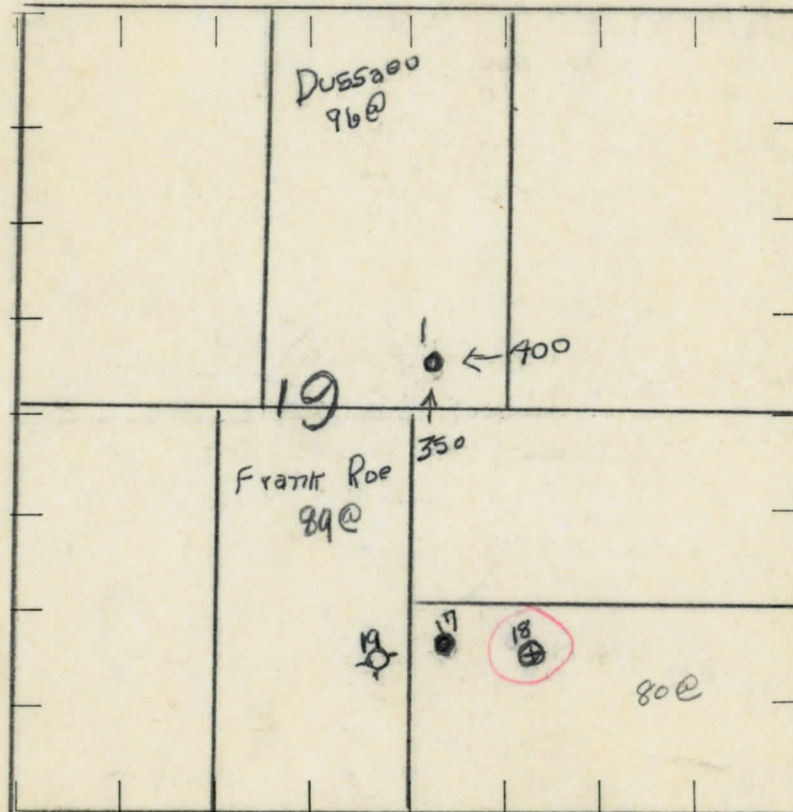
⊕ DRY SHOWING GAS

⊕ ABANDONED LOCATION

⊕ ABANDONED GAS WELL

⊕ ABANDONED OIL WELL

NOTE: Below make tracing from map (when no map is obtainable make sketch), showing farm, center of section, this location with measurements and also wells, dry holes, or other locations in the vicinity of this location. Make copy to keep for reference and send original to Columbus office.



REMARKS:

SIGNED

Superintendent or Foreman.

DATE 16th 1st 1895 DIST. Dundee SEC. 19 TOWN 6S RANGE 6E
 STATE Michigan COUNTY Monroe TWP. Dundee PREC. 19
 WELL No. 1 (SERIAL No. 19) FARM Roe ACRES
 NAME OF STREAM OR WATERS QUADRANGLE
 OPERATOR Deerfield Oil & Gas Co. MAP Stamp

Feet from North Line of Farm

" " East " " "

" " South " " "

" " West " " "

Feet from North Line of Section

" " East " " "

" " South " " "

" " West " " "

LEGEND

○ LOCATION

① RIG

⊕ DRILLING

☼ GAS WELL

● OIL WELL

◆ SMALL OIL WELL

⬢ DRY HOLE

⬢ DRY SHOWING OIL

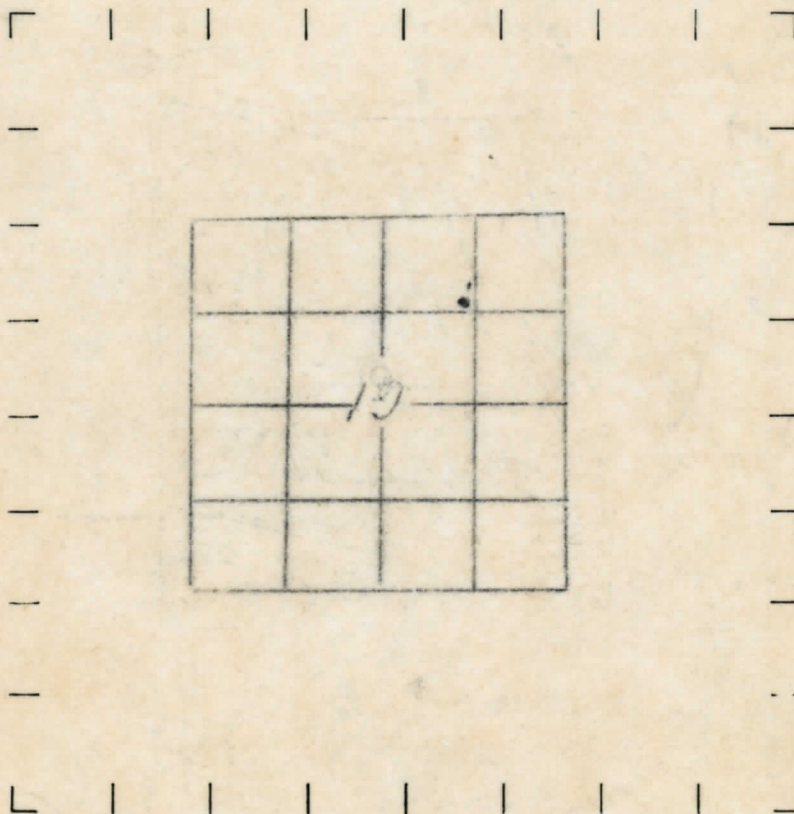
⬢ DRY SHOWING GAS

⬢ ABANDONED LOCATION

⬢ ABANDONED GAS WELL

⬢ ABANDONED OIL WELL

NOTE: Below make tracing from map, (when no map is obtainable make sketch) showing farm, center of section, this location with measurements and also wells, dry holes, or other locations in the vicinity of this location. Make copy to keep for reference and send original to Chicago office.



REMARKS:

SIGNED

Superintendent or Foreman.

COMPLETION RECORD No. 18

DATE Sept 22nd 1928 STATE Michigan COUNTY Monroe DIST. Dundee SEC. 19 TOWN 65 RANGE 6E
WELL No. 2 (SERIAL No. 18) FARM Gardner ACRES

NAME OF STREAM OR WATERS QUADRANGLE
OPERATOR Deerfield Oil Co MAP Deerfield Sp. Monroe Co.
LOCATION REPORT SENT IN (DATE) April 17th 1928
WELL STARTED (DATE) 1928 WELL COMPLETED (DATE) Sept 22nd 1928

OIL WELL GAS WELL DRY HOLE ABANDONED WELL

CROSS OUT THREE OF THE ABOVE
WELL RECORD

DATE OF SHOT	July 5th 1928	NUMBER OF QUARTS	200
1st 24 HOURS PRODUCTION	50 ?	BARRELS OR FEET	
2nd " " "	75 ?	" " "	
3rd " " "	12	" " "	
4th " " "	12	" " "	
5th " " "	12	" " "	

SAND AND CASING

CASING SIZE	WEIGHT	CASING Feet Inches	SAND Name and Nature	TOP	BOTTOM	TOP PAY	BOTTOM PAY	SALT WATER
8"		91'	Limestone	74	1420			
6 7/8"		1455	Slate + lime	1420	1455			
			Brown lime	1455	1475			
			Slate + lime + shells	1475	1575			
			Pink slate	1575	1625			
			Lime + shells	1625	1880			
			Brown slate	1880	2091			
			Top Trenton	2091	2198	2110		
						2121		
						2163		
						2198	2198	

REMARKS	PULLED OUT	PUT IN

