



Western Michigan University  
ScholarWorks at WMU

---

Legacy Scout Tickets from Pure Oil Company

---

8-20-2021

MGRRE\_PureOilScoutTickets\_Naggs, John (T. S. Rath present owner)\_1\_unk

MGRRE  
*Western Michigan University*

Follow this and additional works at: <https://scholarworks.wmich.edu/pure>



Part of the Geology Commons

---

#### WMU ScholarWorks Citation

MGRRE, "MGRRE\_PureOilScoutTickets\_Naggs, John (T. S. Rath present owner)\_1\_unk" (2021). *Legacy Scout Tickets from Pure Oil Company*. 6020.  
<https://scholarworks.wmich.edu/pure/6020>

This Document is brought to you for free and open access via ScholarWorks at WMU. It has been accepted for inclusion in Legacy Scout Tickets from Pure Oil Company by an authorized administrator of ScholarWorks at WMU. See the National Digital Catalogue - Science Base Catalogue for more collections submitted by MGRRE.



---

MGRRE\_PureOilScoutTickets\_Naggs, John (T. S. Rath present owner)\_1\_unk

API unk

Permit Number unk

Lease Name Naggs, John (T. S. Rath present owner)

Well Number 1

County Monroe

Township 07S

Range 07E

Section 13

2021 DEQ or Pure co\_name Unknown

Pure Number 21

Latitude 41.8742368

Longitude -83.5434509

## THE PURE OIL COMPANY

## LOCATION REPORT

DATE June 16th 1928 No. 21  
 STATE Michigan COUNTY Monroe DIST. Raisinville SEC. 13 TOWN 7S RANGE 7E  
 WELL No. 10 (SERIAL No. 21) FARM John Naggs ACRES \_\_\_\_\_  
 NAME OF STREAM OR WATERS \_\_\_\_\_ QUADRANGLE \_\_\_\_\_  
 OPERATOR \_\_\_\_\_ MAP 1/2" = 1 mile

\_\_\_\_\_ Feet from North Line of Farm

\_\_\_\_\_ " " East " " "

\_\_\_\_\_ " " South " " "

\_\_\_\_\_ " " West " " "

\_\_\_\_\_ Feet from North Line of Section

\_\_\_\_\_ " " East " " "

\_\_\_\_\_ " " South " " "

\_\_\_\_\_ " " West " " "

## LEGEND

O LOCATION

① RIG

⊕ DRILLING

⊗ GAS WELL

● OIL WELL

⦿ SMALL OIL WELL

⦿ DRY HOLE

⦿ DRY SHOWING OIL

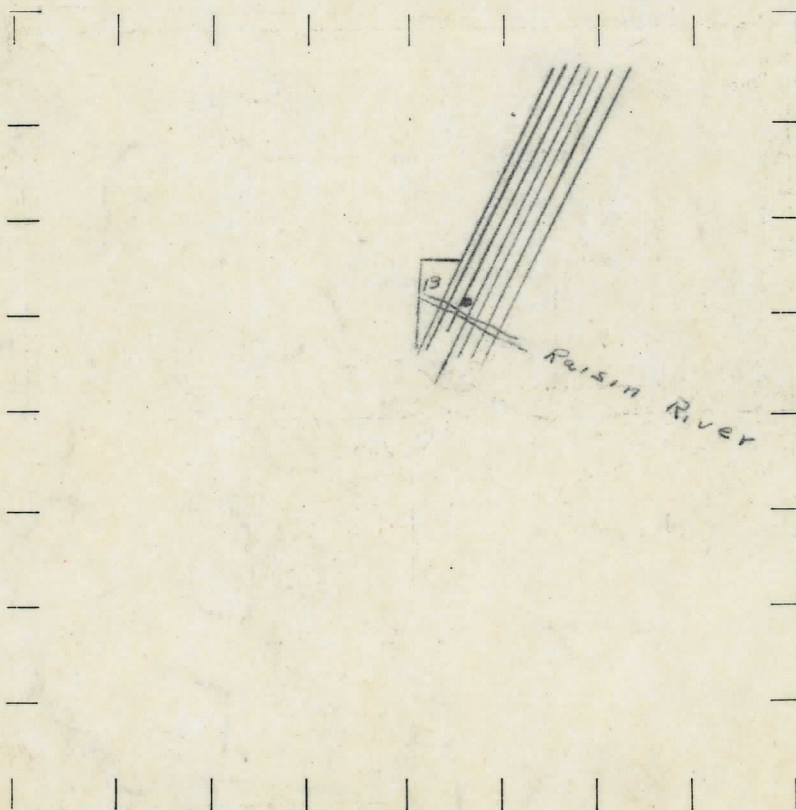
⦿ DRY SHOWING GAS

⦿ ABANDONED LOCATION

⦿ ABANDONED GAS WELL

⦿ ABANDONED OIL WELL

NOTE: Below make tracing from map (when no map is obtainable make sketch), showing farm, center of section, this location with measurements and also wells, dry holes, or other locations in the vicinity of this location. Make copy to keep for reference and send original to Columbus office.



REMARKS:

SIGNED

Superintendent or Foreman.



## No.

## No.

DATE.....

STATE Mich COUNTY Monroe DIST. Raisinville TWP. 13B<sup>100</sup> SEC. 7S TOWN 7E RANGE 7E

WELL No. \_\_\_\_\_ (SERIAL No. \_\_\_\_\_) FARM John Naggs (J.S. Rath present owner) ACRES \_\_\_\_\_

NAME OF STREAM OR WATERS..... Paris River ..... QUADRANGLE.....

OPERATOR ..... MAP ..... *1/2" = 1 mi.*

Feet from North Line of Farm

“ “ East “ “ “

“ “ South “ “ “

“ “ West “ “ “

Feet from North Line of Section

“ “ East “ “ “

“ “ South “ “ “

“ “ West “ “ “

### LEGEND

### ○ LOCATION

⊕ RIG

## ⊕ DRILLING

 GAS WELL

## ● OIL WELL

### ● SMALL OIL WELL

 DRY HOLE

**• DRY SHOWING OIL**

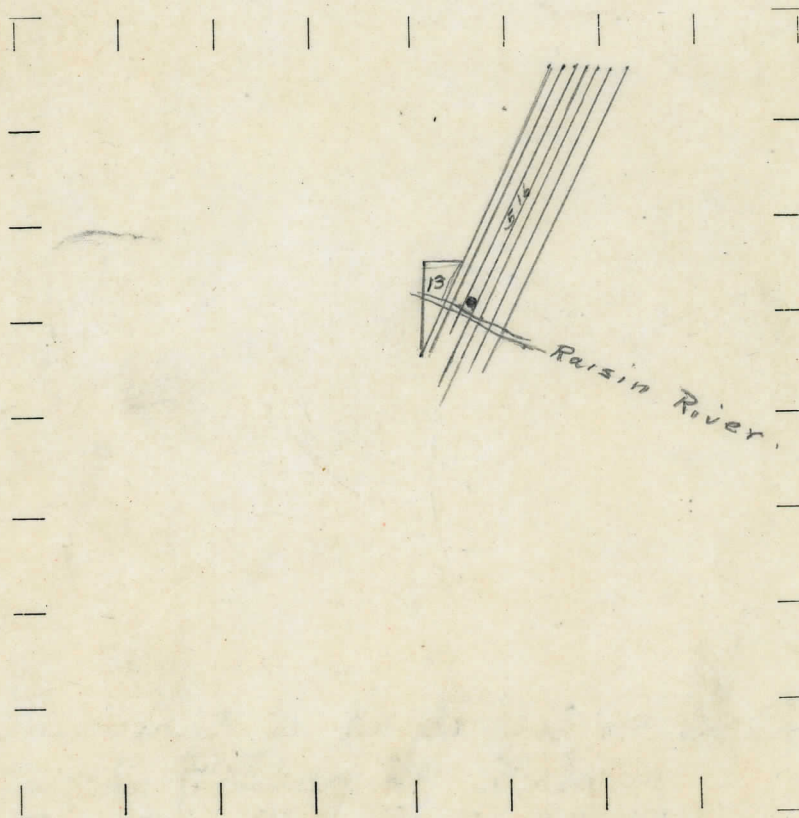
## ⚙️ DRY SHOWING GAS

**ABANDONED LOCATION**

 **ABANDONED GAS WELL**

**ABANDONED OIL WELL**

NOTE: Below make tracing from map (when no map is obtainable make sketch), showing farm, center of section, this location with measurements and also wells, dry holes, or other locations in the vicinity of this location. Make copy to keep for reference and send original to Columbus office.



REMARKS:

**SIGNED**

.....  
 Superintendent or Foreman.







DESCRIPTION	QUANTITY	MAKE	SIZE	MATERIAL
-------------	----------	------	------	----------

LIST OF MATERIAL CHARGEABLE TO WELL NO.

to depth 10.00 - according  
to natives at Grape  
No record available.

Dry + no show oil.  
Sec 13 Block 516.  
Monroe Co. Rainville, Tex.  
John Nagg farm.  
J.S. Rath (present owner)