



Western Michigan University  
ScholarWorks at WMU

---

Legacy Scout Tickets from Pure Oil Company

---

8-20-2021

**MGRRE\_PureOilScoutTickets\_Brunt, F. G.\_1\_21115003810000**

MGRRE

*Western Michigan University*

Follow this and additional works at: <https://scholarworks.wmich.edu/pure>



Part of the Geology Commons

---

#### **WMU ScholarWorks Citation**

MGRRE, "MGRRE\_PureOilScoutTickets\_Brunt, F. G.\_1\_21115003810000" (2021). *Legacy Scout Tickets from Pure Oil Company*. 6021.

<https://scholarworks.wmich.edu/pure/6021>

This Document is brought to you for free and open access via ScholarWorks at WMU. It has been accepted for inclusion in Legacy Scout Tickets from Pure Oil Company by an authorized administrator of ScholarWorks at WMU. See the National Digital Catalogue - Science Base Catalogue for more collections submitted by MGRRE.



---

MGRRE\_PureOilScoutTickets\_Brunt, F. G.\_1\_21115003810000

API 21115003810000

Permit Number 381

Lease Name Brunt, F. G.

Well Number 1

County Monroe

Township 08S

Range 07E

Section 9

2021 DEQ or Pure co\_name Hess, H. J. and Roy, R. C.

Pure Number 22

Latitude 41.80479

Longitude -83.59405

## THE PURE OIL COMPANY

## LOCATION REPORT

No. 22

DATE 4-3-29

STATE Michigan COUNTY Monroe DIST. Bedford SEC. 9 TOWN 8&9S RANGE 7E

WELL No. 1 (SERIAL No. 22) FARM C.F. Brunt ACRES 100

NAME OF STREAM OR WATERS QUADRANGLE NW 1/4 NE 1/4OPERATOR H.J. Hess & C.M. Ross MAP Bedford Twp. - (No Scale)

1040 Feet from North Line of Farm

" " East " " "

" " South " " "

1210 " " West " " "

1040 Feet from North Line of Section

1430 " " East " " "

" " South " " "

" " West " " "

## LEGEND

O LOCATION

① RIG

⊕ DRILLING

⊙ GAS WELL

● OIL WELL

⊙ SMALL OIL WELL

⊙ DRY HOLE

⊙ DRY SHOWING OIL

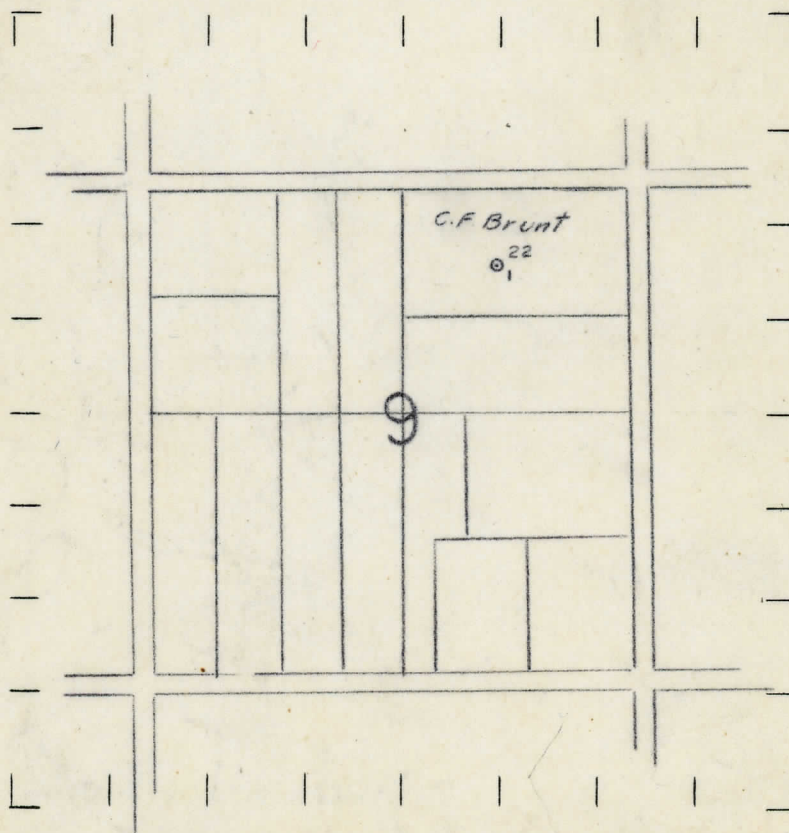
⊙ DRY SHOWING GAS

⊙ ABANDONED LOCATION

⊙ ABANDONED GAS WELL

⊙ ABANDONED OIL WELL

NOTE: Below make tracing from map, (when no map is obtainable make sketch) showing farm, center of section, this location with measurements and also wells, dry holes, or other locations in the vicinity of this location. Make copy to keep for reference and send original to Columbus office.



REMARKS:

SIGNED

Superintendent or Foreman.



Michigan Producing DIVISION  
 DATE April 20, 1922 **COMPLETION RECORD** No. 22

STATE Michigan COUNTY Monroe DIST. TWP. Bedford SEC. 9 TOWN 8 & 9 RANGE 7 E  
PREC.

WELL No. 1 (SERIAL No. 22) FARM C.F. Brunt ACRES           

NAME OF STREAM OR WATERS \_\_\_\_\_ QUADRANGLE \_\_\_\_\_

OPERATOR H.J. Hess & C.M. Ross MAP \_\_\_\_\_

LOCATION REPORT SENT IN (DATE) 4/3/29

WELL STARTED (DATE) April 1929. WELL COMPLETED (DATE) April 20, 1929.

## OIL WELL

## GAS WELL

## DRY HOLE

## ABANDONED WELL

**CROSS OUT THREE OF THE ABOVE**

## WELL RECORD

DATE OF SHOT \_\_\_\_\_ NUMBER OF QUARTS \_\_\_\_\_

1st 24 HOURS PRODUCTION \_\_\_\_\_ BARRELS OR FEET

2nd " " " " " "

3rd " " " " " "

4th " " "

---

5th " " "

---

## SAND AND CASING

[illegible]

REMARKS	Shot 120 ats. 3/30/29-just show oil.
---------	--------------------------------------