



Western Michigan University  
ScholarWorks at WMU

---

Legacy Scout Tickets from Pure Oil Company

---

8-20-2021

**MGRRE\_PureOilScoutTickets\_Huntley\_1\_21115005490000**

MGRRE

*Western Michigan University*

Follow this and additional works at: <https://scholarworks.wmich.edu/pure>



Part of the Geology Commons

---

#### WMU ScholarWorks Citation

MGRRE, "MGRRE\_PureOilScoutTickets\_Huntley\_1\_21115005490000" (2021). *Legacy Scout Tickets from Pure Oil Company*. 6022.

<https://scholarworks.wmich.edu/pure/6022>

This Document is brought to you for free and open access via ScholarWorks at WMU. It has been accepted for inclusion in Legacy Scout Tickets from Pure Oil Company by an authorized administrator of ScholarWorks at WMU. See the National Digital Catalogue - Science Base Catalogue for more collections submitted by MGRRE.



---

## MGRRE\_PureOilScoutTickets\_Huntley\_1\_21115005490000

API 21115005490000

Permit Number 549

Lease Name Huntley

Well Number 1

County Monroe

Township 06S

Range 06E

Section 15

2021 DEQ or Pure co\_name Sheehan and Cilley

Pure Number 23

Latitude 41.96445

Longitude -83.70782

THE PURE OIL COMPANY  
LOCATION REPORT

DATE 6-14-29

No. 23

STATE Michigan COUNTY Monroe DIST. Dundee SEC. 15 TOWN 6S RANGE 6E

WELL No. 1 (SERIAL No. 23) FARM Geo. Huntley ACRES

NAME OF STREAM OR WATERS QUADRANGLE NW $\frac{1}{4}$  NW $\frac{1}{4}$

OPERATOR L. J. Sheehan & Irene Cilley MAP Dundee Twp.

1142' Feet from North Line of Farm

200' " " East " " "

" " South " " "

" " West " " "

1142' Feet from North Line of Section

" " East " " "

" " South " " "

1120' " " West " " "

LEGEND

○ LOCATION

① RIG

⊕ DRILLING

⊗ GAS WELL

● OIL WELL

⬮ SMALL OIL WELL

⬮ DRY HOLE

⬮ DRY SHOWING OIL

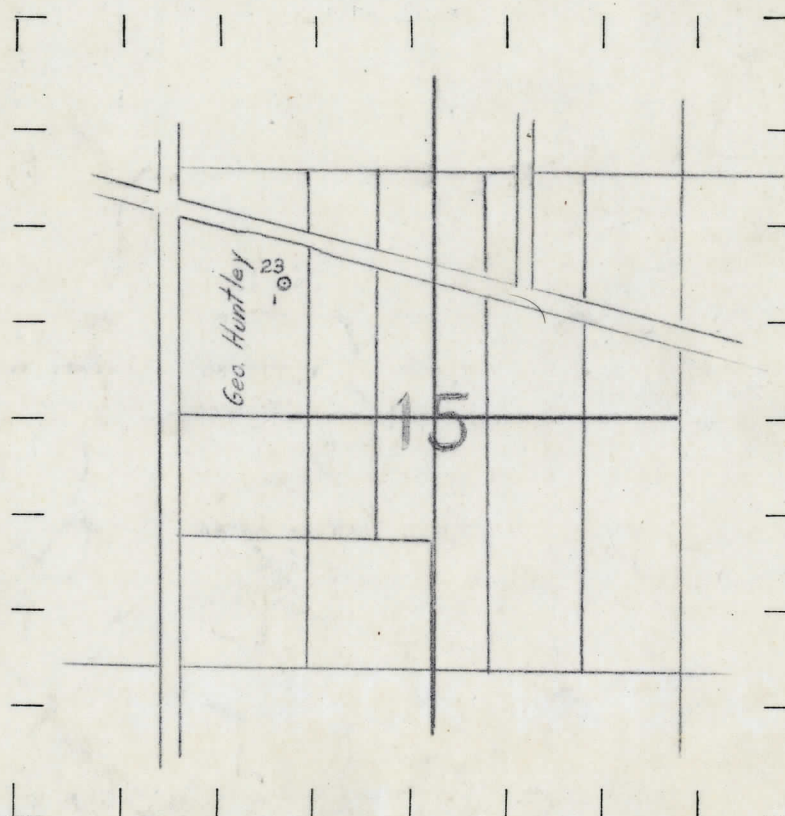
⬮ DRY SHOWING GAS

⬮ ABANDONED LOCATION

⬮ ABANDONED GAS WELL

⬮ ABANDONED OIL WELL

NOTE: Below make tracing from map, (when no map is obtainable make sketch) showing farm, center of section, this location with measurements and also wells, dry holes, or other locations in the vicinity of this location. Make copy to keep for reference and send original to Columbus office.



REMARKS:

SIGNED

Superintendent or Foreman.



Michigan Producing DIVISION

DATE Oct. 4, 1930.

# COMPLETION RECORD

No. - 23 -

STATE Michigan COUNTY Monroe DIST. Dundee SEC. 15 TOWN 6 S RANGE 6 E

WELL No. 1 (SERIAL No. 23) FARM G. Huntley ACRES           

NAME OF STREAM OR WATERS \_\_\_\_\_ QUADRANGLE NW - NW

OPERATOR L.J. Sheehan & Irene Cilley MAP Dundee Twp.

LOCATION REPORT SENT IN (DATE) June 14, 1929.

WELL STARTED (DATE) June 1929. WELL COMPLETED (DATE) Oct. 4, 1930.

## OIL WELL

**GASWELL**

## DRY HOLE

## ABANDONED WELL

CROSS OUT THREE OF THE ABOVE

## WELL RECORD

DATE OF SHOT _____	NUMBER OF QUARTS _____
--------------------	------------------------

1st 24 HOURS PRODUCTION \_\_\_\_\_

2nd " " "

[illegible][illegible][illegible]

## SAND AND CASING

[illegible]

REMARKS Show oil 975' & 1160' show oil 2257'

NOTE:—MAKE COPY TO KEEP FOR REFERENCE AND SEND ORIGINAL TO CHICAGO OFFICE. LIST MATERIAL CHARGEABLE TO WELL ON OTHER SIDE.

SIGNED

SUPT. OR FOREMAN