



Western Michigan University  
ScholarWorks at WMU

---

Legacy Scout Tickets from Pure Oil Company

---

8-20-2021

## MGRRE\_PureOilScoutTickets\_Lapointe and Dusseau\_1\_21115008350000

MGRRE  
*Western Michigan University*

Follow this and additional works at: <https://scholarworks.wmich.edu/pure>



Part of the Geology Commons

---

### WMU ScholarWorks Citation

MGRRE, "MGRRE\_PureOilScoutTickets\_Lapointe and Dusseau\_1\_21115008350000" (2021). *Legacy Scout Tickets from Pure Oil Company*. 6023.  
<https://scholarworks.wmich.edu/pure/6023>

This Document is brought to you for free and open access via ScholarWorks at WMU. It has been accepted for inclusion in Legacy Scout Tickets from Pure Oil Company by an authorized administrator of ScholarWorks at WMU. See the National Digital Catalogue - Science Base Catalogue for more collections submitted by MGRRE.



---

**MGRRE\_PureOilScoutTickets\_Lapointe and Dusseau\_1\_21115008350000**

API 21115008350000

Permit Number 835

Lease Name Lapointe and Dusseau

Well Number 1

County Monroe

Township 06S

Range 06E

Section 19

2021 DEQ or Pure co\_name Morriss, William J.

Pure Number 24

Latitude 41.95077

Longitude -83.76264

## THE PURE OIL COMPANY

DATE Nov. 8, 1929

## LOCATION REPORT

No. 24STATE Michigan COUNTY Monroe DIST. W. Pt. Dundee SEC. 19 TOWN 6 S RANGE 6 EWELL No. 1 (SERIAL No. 24) FARM Lapointe & Dusseau ACRESNAME OF STREAM OR WATERS QUADRANGLE NE $\frac{1}{4}$  - NW $\frac{1}{4}$ OPERATOR Wm. J. Morris - Trustee MAP W. Pt. Dundee Township, Monroe County330 Feet from North Line of Farm792 " " East " " "

" " South " " "

" " West " " "

330 Feet from North Line of Section

" " East " " "

" " South " " "

2218 " " West " " "

## LEGEND

○ LOCATION

① RIG

⊕ DRILLING

⊗ GAS WELL

● OIL WELL

⬮ SMALL OIL WELL

⬮ DRY HOLE

⬮ DRY SHOWING OIL

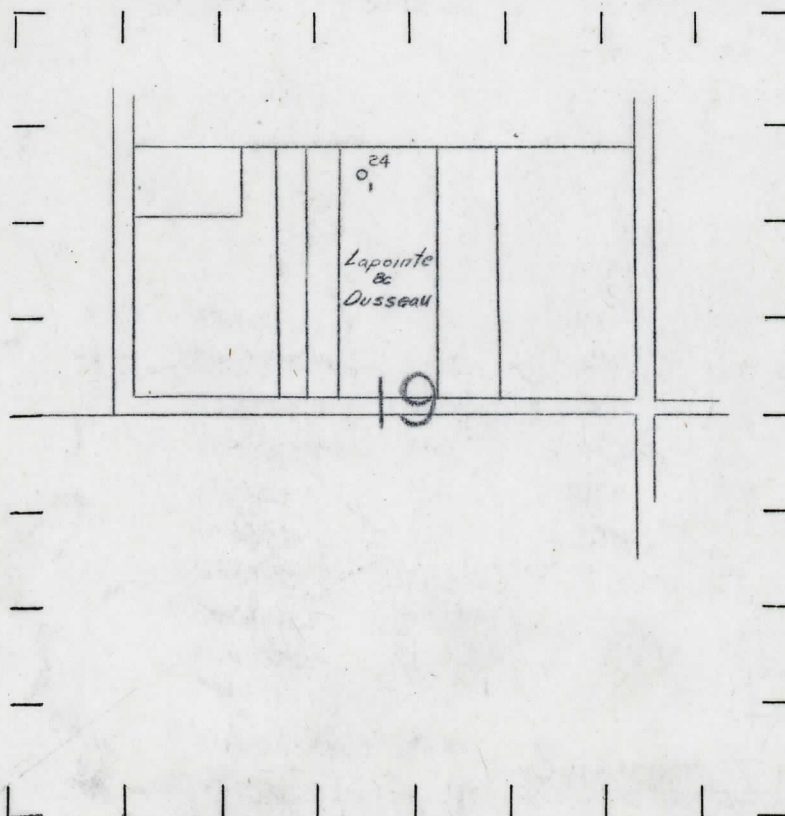
⬮ DRY SHOWING GAS

⬮ ABANDONED LOCATION

⬮ ABANDONED GAS WELL

⬮ ABANDONED OIL WELL

NOTE: Below make tracing from map, (when no map is obtainable make sketch) showing farm, center of section, this location with measurements and also wells, dry holes, or other locations in the vicinity of this location. Make copy to keep for reference and send original to Columbus office.



REMARKS:

SIGNED

Superintendent or Foreman.



THE PURE OIL COMPANY

Michigan Producing DIVISION

DATE March 14, 1931.

COMPLETION RECORD

No. - 24 -

STATE Michigan COUNTY Monroe DIST. TWP. W. Pt. Dundee SEC. 19 TOWN 6 S RANGE 6 E  
PREC.

WELL No. 1 (SERIAL No. 24) FARM Lapointe & Dusseau ACRES

NAME OF STREAM OR WATERS QUADRANGLE NE $\frac{1}{4}$  - NW $\frac{1}{4}$

OPERATOR Wm. J. Norris, trustee MAP W. Pt. Dundee Twp., Monroe Co.

LOCATION REPORT SENT IN (DATE) 11-8-29

WELL STARTED (DATE) 11-8-29 WELL COMPLETED (DATE) 3-14-31

oil well

gas well

dry hole

abandoned well

CROSS OUT THREE OF THE ABOVE

WELL RECORD

DATE OF SHOT 3-3-30 from 2202- 2253' NUMBER OF QUARTS 220  
~~1st 24 HOURS~~ PRODUCTION 25 bbls. on 3-19-30 BARRELS OR FEET  
2nd " " " 2 $\frac{1}{2}$  bbls. " 3-20-30 " " "  
3rd " " " " " " "  
4th " " " " " " "  
5th " " " " " " "

SAND AND CASING

CASING SIZE	WEIGHT	CASING Feet Inches	SAND Name and Nature	TOP	BOTTOM	TOP PAY	BOTTOM PAY	SALT WATER
10"		73	Drift	00'	70'			
6 $\frac{1}{2}$ "		1460	Upp. Monroe	70	265			
			Sylvania	265	385			
			Low. Monroe	385	500			
			Salina	500	1115			
			Niagra	1115	1325			
			Lockport	1325				
			Medina	1565				
			Trenton	2125				
			Total depth	2253'				

REMARKS Show oil 883' - Shot with 220 qts. on 3-3-30/ 2202-2253' Made 25 bbls. oil on 3-19-30 and  
2 $\frac{1}{2}$  bbls. on 3-20-30. Well now plugged and abandoned.  
Log attached.



W. J. Norris, trustee  
Lapointe & Dusseau #1, Our #24,  
W. Pt. Dundee Twp., Monroe Co.

Elev. 709' B.

Sample Determination by W. A. Thomas

0	-	70	Drift
70	-	75	Limestone, some dolomite, and drift material (Brown residue)
75	-	85	Sugary white dolomite, anhydrite and some sand grains (from drift probably) Brown residue
85	-	90	Brown sand, little dolomite (sand probably from drift)
90	-	100	Same
100	-	105	Brown dolomite and little sand (sand probably from drift)
105	-	115	Light and dark brown dolomite
115	-	120	Same
120	-	125	Light gray limy dolomite, drills up fine
125	-	130	Same, plus well rounded sand grains
130	-	135	Light gray and brown dolomite, few well rounded sand grains
135	-	145	Light brown limy dolomite " " " " "
145	-	150	" " " " " " " " "
150	-	160	" " " " " " " " "
160	-	170	Little brown sand and limy dolomite
170	-	230	Light brown dolomite
230	-	235	Gray dolomite, drills up coarse
235	-	240	Gray brown dolomite
240	-	245	Gray dolomite, few sand grains
245	-	250	Gray brown dolomite
250	-	255	" " "
255	-	260	" " " few scattered sand grains
260	-	265	Gray dolomite, " " " "
265	-	270	Well rounded sand grains and light gray dolomite- Top Sylvania
270	-	280	" " " " " " "
280	-	295	Light gray dolomite sandstone
295	-	330	Gray dolomitic sandstone, brisker effervescence
330	-	335	Light brown dolomite, little sand
335	-	340	" " " " "
340	-	345	" " " " "
345	-	350	" " " very few fine sand grains
350	-	355	Gray dolomitic sandstone
355	-	360	Very fine gray dolomitic sandstone-fine well rounded grains
360	-	385	Gray dolomitic sandstone, " " " "
385	-	390	Light brown dolomite, very few grains sand (Bottom Sylvania)
390	-	400	Light brown dolomitic lime
400	-	405	Light brown dolomite
405	-	410	Light brown dolomitic lime
410	-	420	Light brown dolomite, few scattered sand grains (probably fallen in from above)
420	-	425	Light brown dolomite and gypsum, few sand grains
425	-	435	Gray brown dolomite, few sand grains
435	-	450	No samples
450	-	455	Brown dolomite, few sand grains, drills up coarse
455	-	460	Gray dolomite, some pyrite
460	-	465	Brown dolomite (Pyrite and limonite)
465	-	470	Same
470	-	485	Brown dolomite, pyrite and limonite
485	-	490	Gray dolomite, little limonite
490	-	495	Gray brown dolomite, slightly limy, little sand well rounded grains
495	-	500	" " " drills up fine, Bottom Monroe (Lower)



500 - 515	Steel gray dolomite- drilling up coarse-Top Salina
515 - 540	Steel gray dolomite, impure
540 - 590	Steel gray dolomite, and some gypsum
590 - 595	Light gray dolomite, anhydrite, little gypsum
595 - 600	Same, plus gypsum
600 - 605	Light gray dolomite
605 - 610	Light gray brown dolomite, some gypsum
610 - 615	" " " "
615 - 620	Light gray dolomite and gypsum (mostly gypsum)
620 - 625	" " " " " "
625 - 630	" " " some gypsum
630 - 635	" " " " and anhydrite
635 - 640	" " " and very little gypsum
640 - 650	" " " " " "
650 - 655	" " impure dolomite
655 - 660	No sample
660 - 665	Very impure light gray dolomite, little gypsum
665 - 730	Light gray impure dolomite
730 - 735	" " dolomite, with very little iron
735 - 740	Gray brown dolomite, little iron
740 - 745	" " "
745 - 750	" " " gypsum
750 - 755	Light gray dolomite
755 - 775	Medium gray dolomite
775 - 780	Light gray dolomite
780 - 785	Light gray dolomite, and little gypsum
785 - 795	Gray dolomite
795 - 800	Medium gray dolomite, lots of gypsum
800 - 805	" " " , some gypsum
805 - 810	" " " " , little anhydrite
810 - 815	No sample
815 - 820	Brown dolomite, mostly gypsum
820 - 825	Light gray dolomite, little gypsum
825 - 830	" " " some "
830 - 835	" " " little anhydrite
835 - 840	Brownish gray dolomite
840 - 845	Light gray dolomite
845 - 850	" " " , drills up coarse
850 - 860	Light gray dolomite
860 - 885	Light brown dolomite, black carbonaceous material- Oil show 883'
885 - 895	Light brown dolomite
895 - 950	Light gray limy dolomite
950 - 985	Gray limy dolomite, drills up coarse
985 - 1015	Blue gray limy dolomite
1015 - 1035	" " " " , drills up very coarse
1035 - 1060	Gray brown limy dolomite
1060 - 1100	Medium gray dolomite
1100 - 1115	" " " , drills up fine
1115 - 1130	Grayish white dolomite, drills up like flour- Top Niagaran- (Guelph formation)
1130 - 1285	White dolomite
1285 - 1320	Grayish white dolomite- drills up fine
1320 - 1325	Creamy gray dolomite " " "
1325 - 1330	Gray dolomite, some shale, increased effervescence. Drills up coarser-Top Niagaran-Lockport formation.
1330 - 1350	Gray dolomite, drills up coarse, fair effervescence.
1350 - 1355	Whitish gray dolomite
1355 - 1360	Gray dolomite



1360	-	1370	Gray dolomite, black satin, drills up coarse
1370	-	1375	Creamy gray limy dolomite
1375	-	1380	White dolomite, (dirty)
1380	-	1385	" " " , few pieces of green shale
1385	-	1390	Dirty white and some rusty dolomite
1390	-	1400	" " " " " "
1400	-	1405	Gray with some white dolomite
1405	-	1410	White dolomite, some rusty dolomite
1410	-	1415	" and gray dolomite, some pyrite
1415	-	1420	" " " "
1420	-	1425	" " " , little more eff. drills up fine.
1425	-	1430	Mostly gray, little white dolomite
1430	-	1440	Light green shale and dolomite
1440	-	1460	Mostly dolomite and greenish dolomitic shale
1460	-	1470	" brownish gray dolomite and dolomitic shale, few sand grains, little water here.
1470	-	1480	Dolomitic gray shale, greenish, few sand grains
1480	-	1487	Gray shale, slight eff.
1487	-	1490	Brown fine dolomite
1490	-	1495	Gray dolomitic shale and dolomite
1495	-	1500	" " " " "
1500	-	1505	Gray dolomitic and dolomitic shale
1505	-	1515	" " " " "
1515	-	1520	" " " " " , good eff.
1520	-	1530	Shaly dolomite, gray
1530	-	1540	Gray dolomite and gray dolomitic shale
1540	-	1545	" " " little gray dolomite shale
1545	-	1555	" " " " " "
1555	-	1560	Very fine greenish gray dolomite, carbonaceous material, good effervescence
1560	-	1565	Gray dolomitic shale and dolomite, slight red color
1565	-	1570	Red dolomitic shale, slight eff. Top Medina 1565'
1570	-	1575	Brownish gray dolomitic shale
1575	-	1580	Red dolomitic shale
1580	-	1585	Gray dolomitic shale (Richmond-Lorraine)
1585	-	1620	" " " "
1620	-	1625	Gray dolomitic shale, rusty
1625	-	1635	" " " "
1635	-	1815	" " " "
1815	-	1825	" " " , slight eff.
1825	-	1930	Gray dolomitic shale
1930	-	1975	Dark gray shale
1975	-	2035	" " " "
2035	-	2125	Brownish gray shale, Utica shale- Top at 2035'
2125	-	2160	Gray dolomitic lime- Top Trenton 2125'
2160	-	2253	Gray lime

Total depth 2253'