



Western Michigan University
ScholarWorks at WMU

Legacy Scout Tickets from Pure Oil Company

8-20-2021

MGRRE_PureOilScoutTickets_Reau_1_21115009570000

MGRRE

Western Michigan University

Follow this and additional works at: <https://scholarworks.wmich.edu/pure>



Part of the Geology Commons

WMU ScholarWorks Citation

MGRRE, "MGRRE_PureOilScoutTickets_Reau_1_21115009570000" (2021). *Legacy Scout Tickets from Pure Oil Company*. 6024.

<https://scholarworks.wmich.edu/pure/6024>

This Document is brought to you for free and open access via ScholarWorks at WMU. It has been accepted for inclusion in Legacy Scout Tickets from Pure Oil Company by an authorized administrator of ScholarWorks at WMU. See the National Digital Catalogue - Science Base Catalogue for more collections submitted by MGRRE.



MGRRE_PureOilScoutTickets_Reau_1_21115009570000

API 21115009570000

Permit Number 957

Lease Name Reau

Well Number 1

County Monroe

Township 06S

Range 06E

Section 18

2021 DEQ or Pure co_name Morriss, William J.

Pure Number 25

Latitude 41.95255

Longitude -83.76388

CORRECTED LOCATION REPORT
THE PURE OIL COMPANYDATE May 3, 1930

LOCATION REPORT

No. 25STATE Michigan COUNTY Monroe DIST. Dundee SEC. 18 TOWN 6S RANGE 6E
WELL No. 1 (SERIAL No. 25) FARM Arnold Reau ACRESNAME OF STREAM OR WATERS QUADRANGLE SE $\frac{1}{4}$ - SW $\frac{1}{4}$ OPERATOR Wm Morris Trustee MAP Dundee Twp., Monroe County

Feet from North Line of Farm

1020

" " East " " "

330

" " South " " "

" " West " " "

1020Feet from North & So. $\frac{1}{4}$ Line
Line of Section

" " East " " "

330

" " South " " "

" " West " " "

LEGEND

O LOCATION

① RIG

⊕ DRILLING

⊗ GAS WELL

● OIL WELL

⦿ SMALL OIL WELL

✦ DRY HOLE

✦ DRY SHOWING OIL

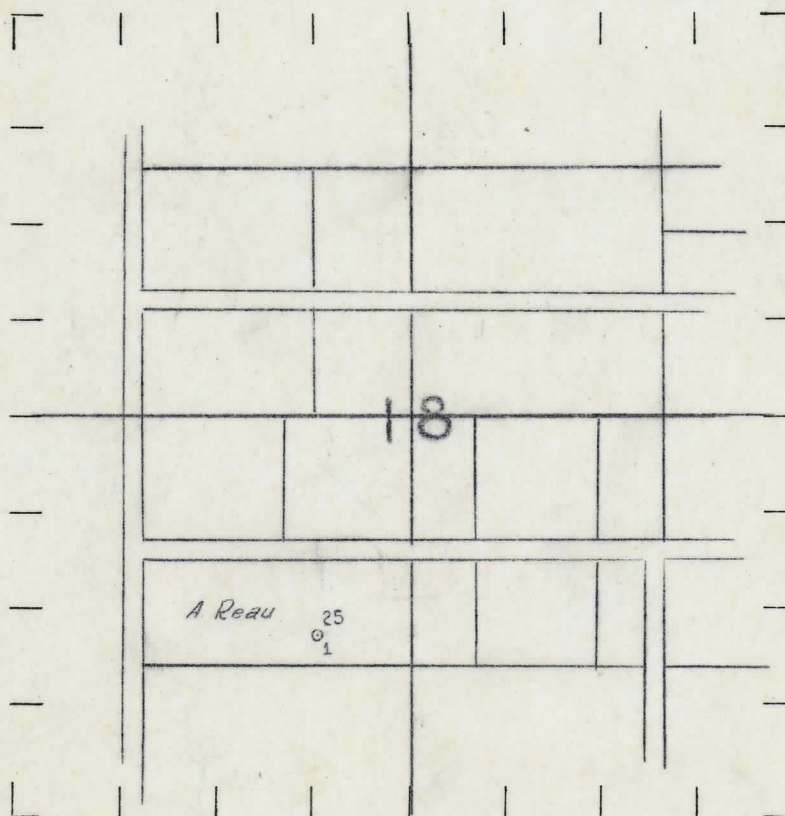
✦ DRY SHOWING GAS

✦ ABANDONED LOCATION

✦ ABANDONED GAS WELL

✦ ABANDONED OIL WELL

NOTE: Below make tracing from map, (when no map is obtainable make sketch) showing farm, center of section, this location with measurements and also wells, dry holes, or other locations in the vicinity of this location. Make copy to keep for reference and send original to Columbus office.

REMARKS: CORRECTED LOCATION REPORT

SIGNED

Superintendent or Foreman.

LOCATION REPORT
THE PURE OIL COMPANY

No. 52
No. 25

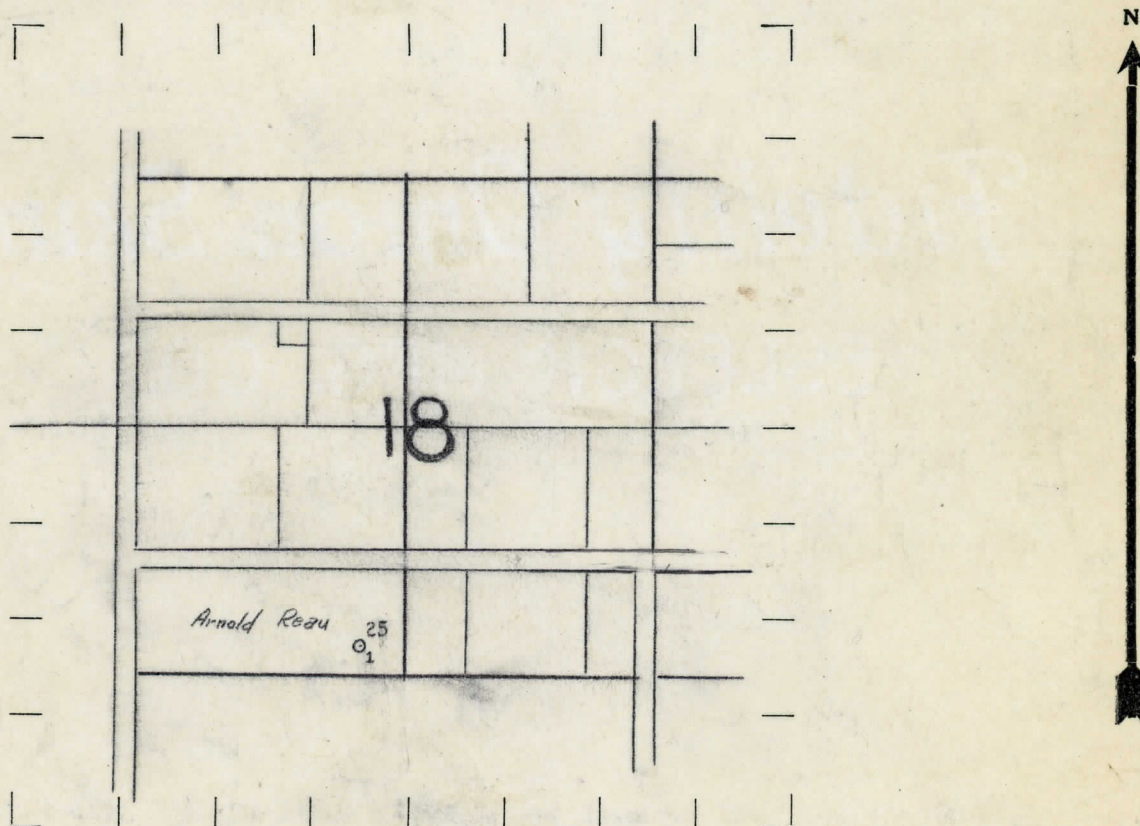
STATE Michigan COUNTY Monroe DIST. Dundee SEC. 18 TOWN 6 S RANGE 6 E
WELL No. 1 (SERIAL No. 25) FARM Arnold Reau ACRES _____
NAME OF STREAM OR WATERS _____ QUADRANGLE SE¹ - SW¹
OPERATOR William Morris, Trustee MAP Dundee Township, Monroe County

Feet from North Line of Farm
530 " " East " " "
330 " " South " " "
" " West " " "
530 & South 1/4 Line
Feet from North ~~LINE OF SECTION~~
" " East " " "
330 " " South " " "
" " West " " "

LEGEND

- | | |
|------------------|----------------------|
| ○ LOCATION | ✦ DRY HOLE |
| ① RIG | ✦ DRY SHOWING OIL |
| ⊕ DRILLING | ✦ DRY SHOWING GAS |
| ⊗ GAS WELL | ⊗ ABANDONED LOCATION |
| ● OIL WELL | ⊗ ABANDONED GAS WELL |
| ⊙ SMALL OIL WELL | ⊙ ABANDONED OIL WELL |

NOTE: Below make tracing from map, (when no map is obtainable make sketch) showing farm, center of section, this location with measurements and also wells, dry holes, or other locations in the vicinity of this location. Make copy to keep for reference and send original to Columbus office.



REMARKS:

SIGNED

Superintendent or Foreman.

