



Western Michigan University  
ScholarWorks at WMU

---

Legacy Scout Tickets from Pure Oil Company

---

8-20-2021

**MGRRE\_PureOilScoutTickets\_Fasking, Geo.\_1\_21115010970000**

MGRRE

*Western Michigan University*

Follow this and additional works at: <https://scholarworks.wmich.edu/pure>



Part of the Geology Commons

---

#### **WMU ScholarWorks Citation**

MGRRE, "MGRRE\_PureOilScoutTickets\_Fasking, Geo.\_1\_21115010970000" (2021). *Legacy Scout Tickets from Pure Oil Company*. 6027.

<https://scholarworks.wmich.edu/pure/6027>

This Document is brought to you for free and open access via ScholarWorks at WMU. It has been accepted for inclusion in Legacy Scout Tickets from Pure Oil Company by an authorized administrator of ScholarWorks at WMU. See the National Digital Catalogue - Science Base Catalogue for more collections submitted by MGRRE.



---

**MGRRE\_PureOilScoutTickets\_Fasking, Geo.\_1\_21115010970000**

API 21115010970000

Permit Number 1097

Lease Name Fasking, Geo.

Well Number 1

County Monroe

Township 05S

Range 06E

Section 30

2021 DEQ or Pure co\_name Dayton, E. L.

Pure Number 28

Latitude 42.02373

Longitude -83.75641

THE PURE OIL COMPANY

DATE October 31, 1930.

LOCATION REPORT

No. 28

STATE Michigan COUNTY Monroe DIST. Milan SEC. 30 TOWN 5 S RANGE 6 E  
 WELL No. 1 (SERIAL No. 28) FARM Fasking ACRES

NAME OF STREAM OR WATERS \_\_\_\_\_ QUADRANGLE NE $\frac{1}{4}$  - NE $\frac{1}{4}$ OPERATOR E.L. Dayton MAP Milan Twp., Monroe Co.300

Feet from North Line of Farm

" " East " " "

" " South " " "

325

" " West " " "

300

Feet from North Line of Section

985

" " East " " "

" " South " " "

" " West " " "

## LEGEND

O LOCATION

① RIG

⊕ DRILLING

⊗ GAS WELL

● OIL WELL

⦿ SMALL OIL WELL

⦿ DRY HOLE

⦿ DRY SHOWING OIL

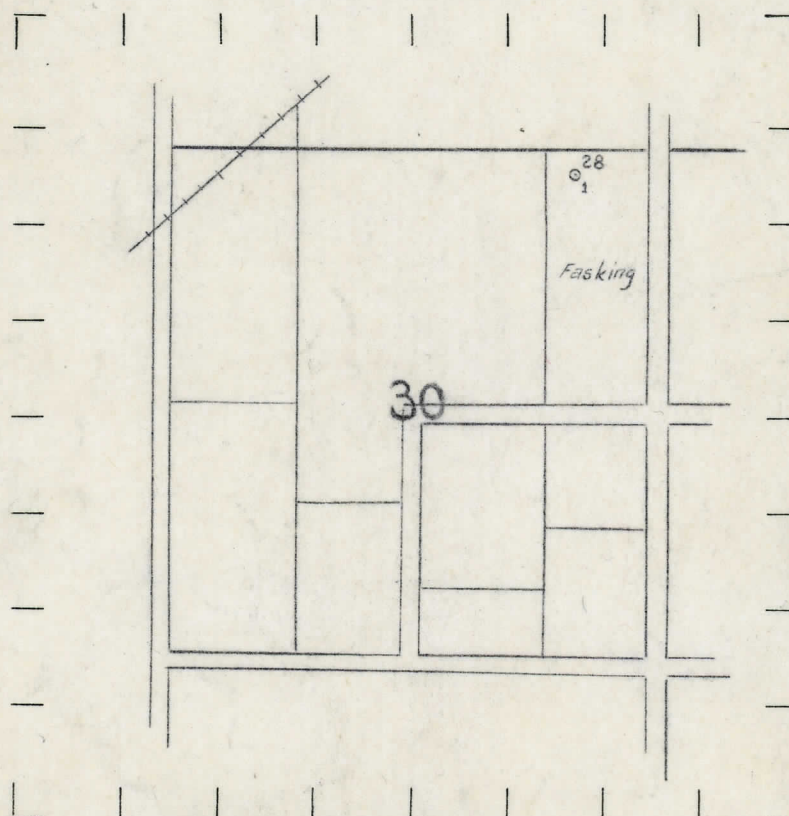
⦿ DRY SHOWING GAS

⦿ ABANDONED LOCATION

⦿ ABANDONED GAS WELL

⦿ ABANDONED OIL WELL

NOTE: Below make tracing from map, (when no map is obtainable make sketch) showing farm, center of section, this location with measurements and also wells, dry holes, or other locations in the vicinity of this location. Make copy to keep for reference and send original to Columbus office.

REMARKS: Originally reported 325' from East line Section.

SIGNED \_\_\_\_\_

Superintendent or Foreman.



DATE October 21, 1930

LOCATION REPORT

No. 58

Form 243 10M &amp; 1930 2100 P.M.C.

THE PURE OIL COMPANY

DATE October 17th, 1930.

LOCATION REPORT

No. 28STATE Michigan COUNTY Monroe DIST. Milan SEC. 30 TOWN 5 S RANGE 6 EWELL No. 1 (SERIAL No. 28) FARM Fasking ACRESNAME OF STREAM OR WATERS QUADRANGLE NE $\frac{1}{4}$  - NE $\frac{1}{4}$ OPERATOR E. I. Dayton MAP Milan Twp., Monroe Co.300 Feet from North Line of Farm325 " " East " " "

" " South " " "

325 " " West " " "300 Feet from North Line of Section985' ~~325~~ " " East " " "

" " South " " "

" " West " " "

## LEGEND

O LOCATION

① RIG

⊕ DRILLING

⊙ GAS WELL

● OIL WELL

⊙ SMALL OIL WELL

⊕ DRY HOLE

⊕ DRY SHOWING OIL

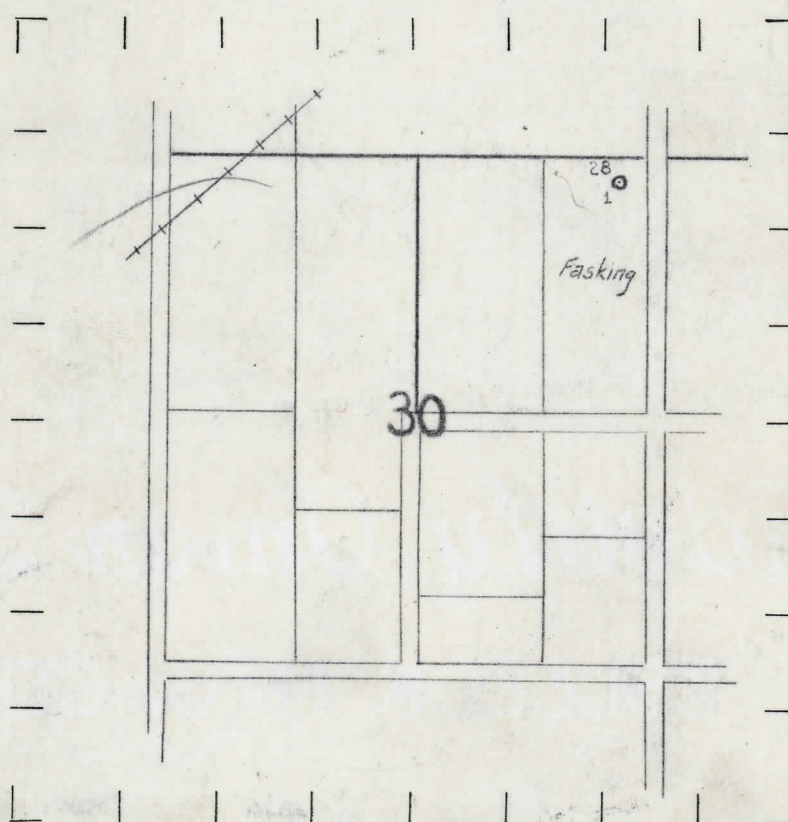
⊕ DRY SHOWING GAS

⊕ ABANDONED LOCATION

⊕ ABANDONED GAS WELL

⊕ ABANDONED OIL WELL

NOTE: Below make tracing from map, (when no map is obtainable make sketch) showing farm, center of section, this location with measurements and also wells, dry holes, or other locations in the vicinity of this location. Make copy to keep for reference and send original to Columbus office.

REMARKS: Originally reported 325' from East line Section.

SIGNED

Superintendent or Foreman.



ГОСЦИОН ВЕБОВЛ

No. 58

COMPANY

УТИТЛАУ

DIST.  
TWP.  
PREC.

Tasking

QUADRANGLE NE-NE

~~E. L. Dayton~~

10-18-30

10-18-30

7-12-33

## GAS WELL

### ABANDONED WELL

CROSS OUT THREE OF THE ABOVE  
WELL RECORD

NUMBER OF QUARTS.

Dry Hole

BARRELS OR FEET

“ “ “

“ “ “

“ “ “

	CASINO RECORD	
--	---------------	--

Foot	Inches	Transfer Number	Notes
			Show of gas at 663. Abandoned but not plugged.

SIGNED.

**SUPT. OR FOREMAN**