



Western Michigan University
ScholarWorks at WMU

Legacy Scout Tickets from Pure Oil Company

8-20-2021

**MGRRE_PureOilScoutTickets_Roe Frank &
Josie_1_21115029520000**

MGRRE
Western Michigan University

Follow this and additional works at: <https://scholarworks.wmich.edu/pure>



Part of the Geology Commons

WMU ScholarWorks Citation

MGRRE, "MGRRE_PureOilScoutTickets_Roe Frank & Josie_1_21115029520000" (2021). *Legacy Scout Tickets from Pure Oil Company*. 6031.
<https://scholarworks.wmich.edu/pure/6031>

This Document is brought to you for free and open access via ScholarWorks at WMU. It has been accepted for inclusion in Legacy Scout Tickets from Pure Oil Company by an authorized administrator of ScholarWorks at WMU. See the National Digital Catalogue - Science Base Catalogue for more collections submitted by MGRRE.



MGRRE_PureOilScoutTickets_Roe Frank & Josie_1_21115029520000

API 21115029520000

Permit Number 2952

Lease Name Roe Frank & Josie

Well Number 1

County Monroe

Township 06S

Range 06E

Section 19

2021 DEQ or Pure co_name San Lor Company, Incorporated dba Lor San Oil Company

Pure Number 32

Latitude 41.9378363

Longitude -83.7615838

WELL REPORT - OUTSIDE OPERATIONS

SERIAL NO. 32-69STATE Michigan ~~XPSH~~ Monroe CO.OPERATOR M. R. McPheronFARM Frank Roe WELL NO. 1-6TWP. Dundee S. 19 T. 6S R. 6E

LOC. _____

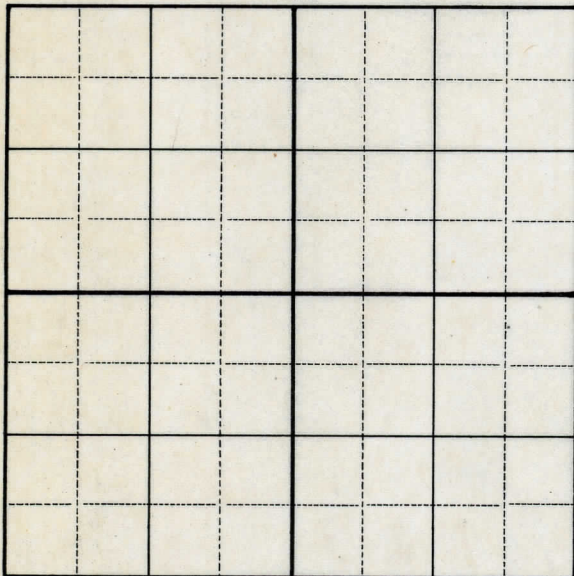
WILDCAT ☐ FIELD ☐ FIELD NAME _____

MAP NO. _____ CO-ORD. _____ ELEV. _____

STATUS _____

Operator's name changed from:
James S. Brailey

NORTH

DATE 8-7-50 SCOUT H. J. G.

THE PURE OIL COMPANY

LOCATION REPORT

Date 2-3-43 Corrected

A.F.E. No. _____

Division Mich. Producing District _____ Lease Frank D. Roe

Acres _____ Lease No. _____ Elevation _____ Well No. 1 (Serial No. 32)

Quadrangle SE SE SW Sec. 19 Twp. 6 S Rge. 6 E ^{Dist.} Dundee

Survey _____ County Monroe State Michigan

Operator James S. Brailey Map Dundee Township, Monroe County

_____ Feet from North Line of Lease

_____ " " East " " "

_____ " " South " " "

_____ " " West " " "

Feet from North Line of Section

“ “ East “ “ “

_____ " " South " " "

_____ " " West " " "

LEGEND

☐ Location



Gas Well



Oil Well



Gas — Distillate Well



Dry Hole



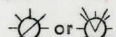
Dry Showing Oil



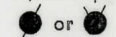
Dry Showing Gas



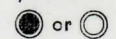
Abandoned Location



Abandoned Gas Well



Abandoned Oil Well



Input Well

See plat - Serial No. Monroe 32.

Remarks: Change of operator.

Scale _____

Submitted by J. S. - Scouting Dept.

Civil Engineer

Approved by _____

Division Manager

Approved by _____

Vice-President - General Manager

Date

5-3-33

Collected

LOCATION REPORT

V.E.E. NO.

THE PURE OIL COMPANY

THE PURE OIL COMPANY

DATE December 5, 1935

LOCATION REPORT

No. 32

STATE Mich.

COUNTY

Monroe

DIST.

TWP.

Dundee

SEC.

19

TOWN

6 S

RANGE 6 E

WELL No.

1

(SERIAL No. 32) FARM

PREC.

Frank D. Roe

ACRES

NAME OF STREAM OR WATERS

QUADRANGLE

SE-SE-SW

OPERATOR

A. V. Oil & Gas Co.

Map

Dundee Twp., Monroe County

Dundee Twp - Monroe Co.

Feet from North Line of Farm

400 400 " " East " " "

250 250 " " South " " "

" " West " " "

Feet from North Line of Section

400 400 " " East " " "

250 250 " " South " " "

" " West " " "

LEGEND

O LOCATION

① RIG

⊕ DRILLING

☀ GAS WELL

● OIL WELL

● SMALL OIL WELL

⊙ DRY HOLE

● DRY SHOWING OIL

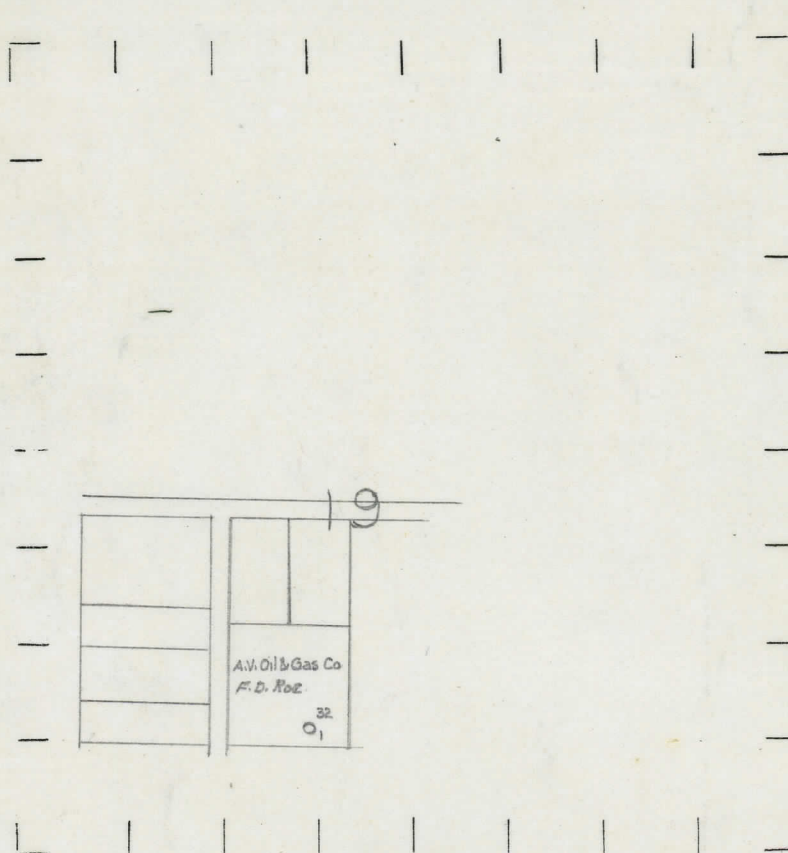
⊙ DRY SHOWING GAS

⊙ ABANDONED LOCATION

☀ ABANDONED GAS WELL

● ABANDONED OIL WELL

NOTE: Below make tracing from map, (when no map is obtainable make sketch) showing farm, center of section, this location with measurements and also wells, dry holes, or other locations in the vicinity of this location.



REMARKS:

SIGNED

R. L. Yager
Superintendent or Foreman.

Signed