



Western Michigan University  
ScholarWorks at WMU

---

Legacy Scout Tickets from Pure Oil Company

---

8-20-2021

**MGRRE\_PureOilScoutTickets\_Roe, Frank\_2\_21115036370000**

MGRRE

*Western Michigan University*

Follow this and additional works at: <https://scholarworks.wmich.edu/pure>



Part of the Geology Commons

---

#### **WMU ScholarWorks Citation**

MGRRE, "MGRRE\_PureOilScoutTickets\_Roe, Frank\_2\_21115036370000" (2021). *Legacy Scout Tickets from Pure Oil Company*. 6038.

<https://scholarworks.wmich.edu/pure/6038>

This Document is brought to you for free and open access via ScholarWorks at WMU. It has been accepted for inclusion in Legacy Scout Tickets from Pure Oil Company by an authorized administrator of ScholarWorks at WMU. See the National Digital Catalogue - Science Base Catalogue for more collections submitted by MGRRE.



---

MGRRE\_PureOilScoutTickets\_Roe, Frank\_2\_21115036370000

API 21115036370000

Permit Number 3637

Lease Name Roe, Frank

Well Number 2

County Monroe

Township 06S

Range 06E

Section 19

2021 DEQ or Pure co\_name A V Oil and Gas Company

Pure Number 39

Latitude 41.93912

Longitude -83.76104

DATE October 29, 1936

## LOCATION REPORT

No. 39STATE MichiganCOUNTY MonroeDIST. DundeeTWP. DundeeSEC. 19TOWN 6 SRANGE 6 EWELL No. 2 2 (SERIAL No. 39) FARMPREC. Frank Roe

ACRES

NAME OF STREAM OR WATERS

QUADRANGLE

OPERATOR A. V. Oil & Gas CompanyMap Dundee Township, Monroe CountyA.V. Oil & Gas Co.Dundee - Monroe670670 Feet from North Line of Farm40400 " " East " " "

" " South " " "

" " West " " "

Feet from North Line of Section

40400 " " East " 1/4 "650650 " " South " " "

" " West " " "

## LEGEND

O LOCATION

① RIG

⊕ DRILLING

☼ GAS WELL

● OIL WELL

⬮ SMALL OIL WELL

⊙ DRY HOLE

⬮ DRY SHOWING OIL

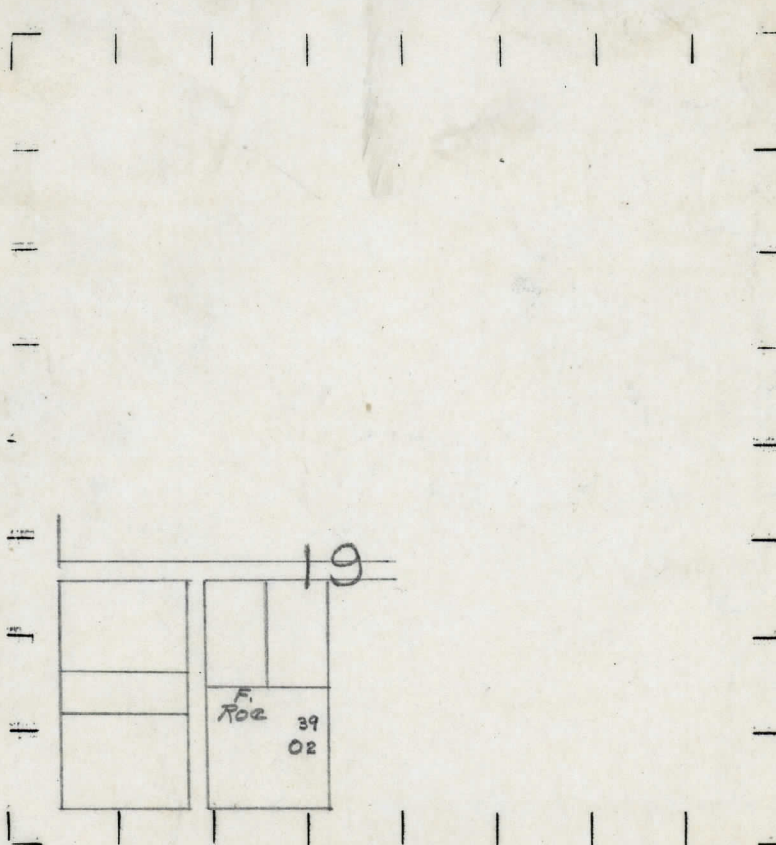
⊙ DRY SHOWING GAS

⊙ ABANDONED LOCATION

☼ ABANDONED GAS WELL

⬮ ABANDONED OIL WELL

NOTE: Below make tracing from map, (when no map is obtainable make sketch) showing farm, center of section, this location with measurements and also wells, dry holes, or other locations in the vicinity of this location.



REMARKS:

SIGNED

R. L. Yeager  
Superintendent or Foreman.



Signed Dean C. Shackelford