



Western Michigan University
ScholarWorks at WMU

Legacy Scout Tickets from Pure Oil Company

8-20-2021

MGRRE_PureOilScoutTickets_Wohlgamuth,
Alby_1_21115039720000

MGRRE
Western Michigan University

Follow this and additional works at: <https://scholarworks.wmich.edu/pure>



Part of the Geology Commons

WMU ScholarWorks Citation

MGRRE, "MGRRE_PureOilScoutTickets_Wohlgamuth, Alby_1_21115039720000" (2021). *Legacy Scout Tickets from Pure Oil Company*. 6039.
<https://scholarworks.wmich.edu/pure/6039>

This Document is brought to you for free and open access via ScholarWorks at WMU. It has been accepted for inclusion in Legacy Scout Tickets from Pure Oil Company by an authorized administrator of ScholarWorks at WMU. See the National Digital Catalogue - Science Base Catalogue for more collections submitted by MGRRE.



MGRRE_PureOilScoutTickets_Wohlgamuth, Alby_1_21115039720000

API 21115039720000

Permit Number 3972

Lease Name Wohlgamuth, Alby

Well Number 1

County Monroe

Township 07S

Range 06E

Section 6

2021 DEQ or Pure co_name Michigan Pacific Oil and Gas Company

Pure Number 40

Latitude 41.90539

Longitude -83.76069

DATE March 25, 1937

LOCATION REPORT

No. 40

STATE Michigan COUNTY Monroe DIST. Summerfield SEC. 6 TOWN 7 S RANGE 6 E
 WELL No. 1 (SERIAL No. 40) FARM Alby Wohlgaamuth ACRES
 NAME OF STREAM OR WATERS _____ QUADRANGLE SE-NE-NW
SE NE NW

OPERATOR Michigan Pacific Oil & Gas Company Map Summerfield Township, Monroe County
Mich Pacific Oil & Gas Co. Summerfield-Monroe

990990 Feet from North Line of Farm

330330 " " East " " "

" " South " " "

" " West " " "

990 990 Feet from North Line of Section

330 330 " " East " 1 1/4 "

" " South " " "

" " West " " "

LEGEND

○ LOCATION

① RIG

⊕ DRILLING

☀ GAS WELL

● OIL WELL

⬮ SMALL OIL WELL

⊖ DRY HOLE

⬮ DRY SHOWING OIL

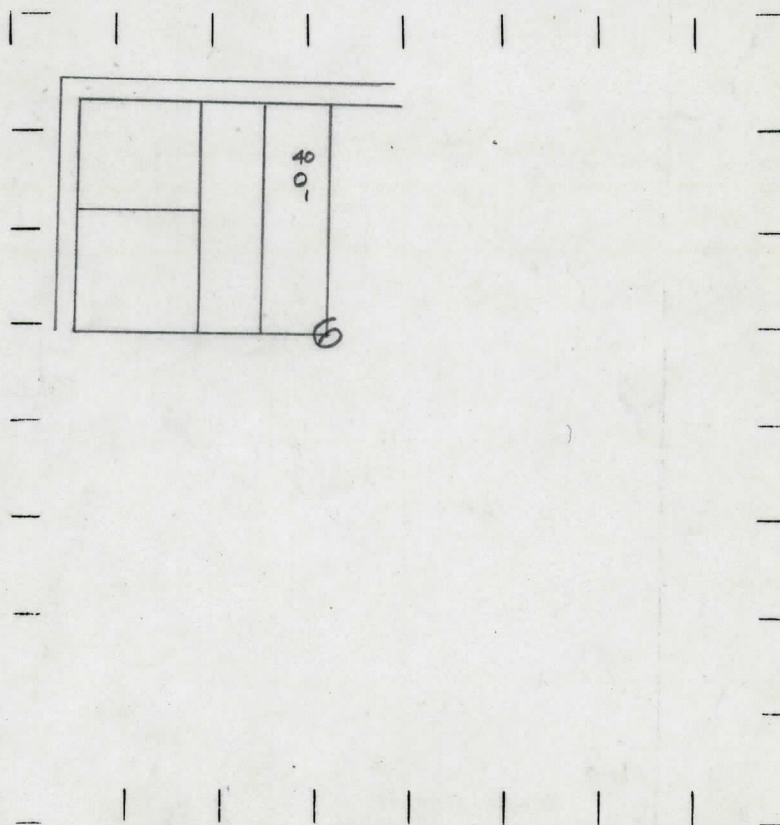
⊖ DRY SHOWING GAS

⊖ ABANDONED LOCATION

☀ ABANDONED GAS WELL

⬮ ABANDONED OIL WELL

NOTE: Below make tracing from map, (when no map is obtainable make sketch) showing farm, center of section, this location with measurements and also wells, dry holes, or other locations in the vicinity of this location.



REMARKS:

SIGNED

R. A. Young
 Superintendent or Foreman.

