



Western Michigan University
ScholarWorks at WMU

Legacy Scout Tickets from Pure Oil Company

8-20-2021

MGRRE_PureOilScoutTickets_Russell, J._1_21115042160000

MGRRE

Western Michigan University

Follow this and additional works at: <https://scholarworks.wmich.edu/pure>



Part of the Geology Commons

WMU ScholarWorks Citation

MGRRE, "MGRRE_PureOilScoutTickets_Russell, J._1_21115042160000" (2021). *Legacy Scout Tickets from Pure Oil Company*. 6040.

<https://scholarworks.wmich.edu/pure/6040>

This Document is brought to you for free and open access via ScholarWorks at WMU. It has been accepted for inclusion in Legacy Scout Tickets from Pure Oil Company by an authorized administrator of ScholarWorks at WMU. See the National Digital Catalogue - Science Base Catalogue for more collections submitted by MGRRE.



MGRRE_PureOilScoutTickets_Russell, J._1_21115042160000

API 21115042160000

Permit Number 4216

Lease Name Russell, J.

Well Number 1

County Monroe

Township 06S

Range 07E

Section 5

2021 DEQ or Pure co_name Viloette, Milburn

Pure Number 41

Latitude 41.98371

Longitude -83.63015

DATE June 10, 1937

LOCATION REPORT

No. 41STATE Michigan

COUNTY

Monroe

DIST.

TWP.

DundeeSEC. 5

TOWN

6 S

RANGE

7 EWELL No. 1(SERIAL No. 41)

FARM

PREC.

John Russell

ACRES

NAME OF STREAM OR WATERS

QUADRANGLE

SE SW SW

OPERATOR

Milburn Violette

Map

Dundee Township, Monroe CountyMilburn VioletteDundee - Monroe.

Feet from North Line of Farm

250 200

" " East " " "

250 200

" " South " " "

" " West " " "

Feet from North Line of Section

250 200

" " East " " "

1120 1120

" " South " " "

" " West " " "

LEGEND

○ LOCATION

① RIG

⊕ DRILLING

☼ GAS WELL

● OIL WELL

⦿ SMALL OIL WELL

⊖ DRY HOLE

⦿ DRY SHOWING OIL

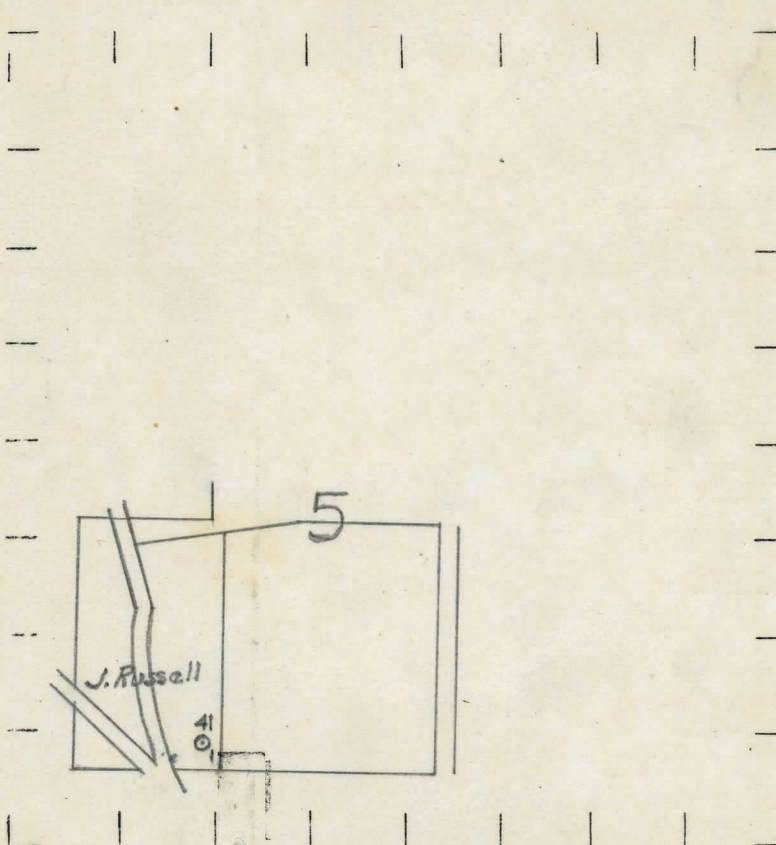
⊖ DRY SHOWING GAS

⊖ ABANDONED LOCATION

☼ ABANDONED GAS WELL

⦿ ABANDONED OIL WELL

NOTE: Below make tracing from map, (when no map is obtainable make sketch) showing farm, center of section, this location with measurements and also wells, dry holes, or other locations in the vicinity of this location.



N

REMARKS:

SIGNED

R. L. Yeager
Superintendent or Foreman.

