



Western Michigan University
ScholarWorks at WMU

Legacy Scout Tickets from Pure Oil Company

8-20-2021

MGRRE_PureOilScoutTickets_Roe, Frank_3_21115042250000

MGRRE

Western Michigan University

Follow this and additional works at: <https://scholarworks.wmich.edu/pure>



Part of the Geology Commons

WMU ScholarWorks Citation

MGRRE, "MGRRE_PureOilScoutTickets_Roe, Frank_3_21115042250000" (2021). *Legacy Scout Tickets from Pure Oil Company*. 6041.

<https://scholarworks.wmich.edu/pure/6041>

This Document is brought to you for free and open access via ScholarWorks at WMU. It has been accepted for inclusion in Legacy Scout Tickets from Pure Oil Company by an authorized administrator of ScholarWorks at WMU. See the National Digital Catalogue - Science Base Catalogue for more collections submitted by MGRRE.



MGRRE_PureOilScoutTickets_Roe, Frank_3_21115042250000

API 21115042250000

Permit Number 4225

Lease Name Roe, Frank

Well Number 3

County Monroe

Township 06S

Range 06E

Section 30

2021 DEQ or Pure co_name Brailey James S.

Pure Number 42

Latitude 41.93678

Longitude -83.76171

THE PURE OIL COMPANY

LOCATION REPORT

Date 2-3-43 Corrected _____ A.F.E. No. _____

Division Mich. Producing District _____ Lease Frank Roe

Acres _____ Lease No. _____ Elevation _____ Well No. 3 (Serial No. 42)

Quadrangle NE NE NW Sec. 30 Twp. 6 S Rge. 6 E ~~XXXX~~ ~~XXXX~~ Twp. Dundee

Survey _____ County Monroe State Michigan

Operator James S. Brailey Map Dundee Township, Monroe County

Feet from North Line of Lease

" " East " " "

" " South " " "

" " West " " "

Feet from North Line of Section

" " East " " "

" " South " " "

" " West " " "

LEGEND

○ Location

☀ Gas Well

● Oil Well

☀ Gas - Distillate Well

○ or ○ Dry Hole

● Dry Showing Oil

☀ Dry Showing Gas

⊗ Abandoned Location

☀ or ☀ Abandoned Gas Well

● or ● Abandoned Oil Well

⊗ or ⊗ Input Well

See plat - Serial No. Monroe 42.



Remarks: Change of operator.

Scale _____

Submitted by J.S. - Scouting Dept.

~~XXXX Engineer~~

Approved by _____

Division Manager

Approved by _____

Vice-President - General Manager

Division
Date

DATE
April 1, 1942

COLLECTED

LOCATION REPORT

A.F.E. No.

Division
Mich. Producing

District

Lease
Frank Roe

Acres

Lease No.

Elevation

Well No.
3

Quadrangle
NE NE NW

Sec.
30

Twp.
6 S

Rge.
6 E

Twp.
Dundee

Survey

County
Monroe

State
Michigan

Operator
A. V. Oil & Gas Company

Map
Dundee Township, Monroe County

Feet North of South Line of Lease
" East " West " " "
" South " North " " "
" West " East " " "
Feet North of South Line of Section
" East " West " " "
" South " North " " "
" West " East " " "

Gas Well
Oil Well
Dry Hole
Dry Showing Oil

LEGEND
Location
Dry Showing Gas
Abandoned Location
Abandoned Gas Well
Abandoned Oil Well

Plugged and abandoned 12-10-41.

Total Depth 2135'.



Remarks:

Scale:

Submitted by:

Civil Engineer

Approved by:

Division Manager

Approved by:

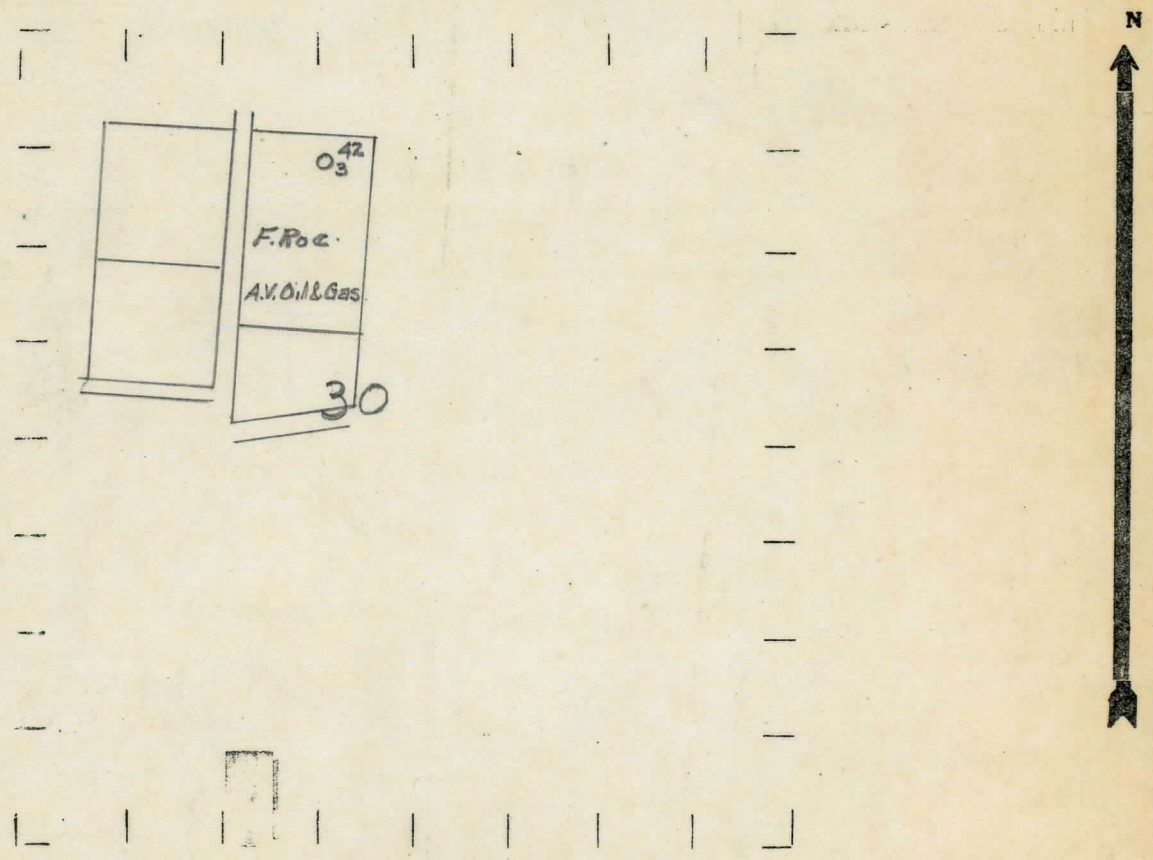
Vice-President - General Manager

Date: April 1, 1943
 State: Michigan COUNTY: Monroe TWP: Dundee SEC: 30 TOWN: 6 S RANGE: 6 E
 WELL No. 33 (SERIAL No. 42) FARM Frank Roe ACRES
 NAME OF STREAM OR WATERS QUADRANGLE NE-NE-NW.
 OPERATOR A. V. Oil & Gas Company Map Dundee Township, Monroe County
 A. V. Oil & Gas Co Dundee - Monroe

Feet from North Line of Farm
 600 600 " " East " " "
 1200 200 " " South " " "
 " " West " " "
 200 200 Feet from North Line of Section
 600 600 " " East " " "
 " " South " " "
 " " West " " "

- LEGEND
- LOCATION
 - ⊙ RIG
 - ⊕ DRILLING
 - ☼ GAS WELL
 - OIL WELL
 - ⦿ SMALL OIL WELL
 - ⊙ DRY HOLE
 - ⦿ DRY SHOWING OIL
 - ⊙ DRY SHOWING GAS
 - ⦿ ABANDONED LOCATION
 - ☼ ABANDONED GAS WELL
 - ⦿ ABANDONED OIL WELL

NOTE: Below make tracing from map, (when no map is obtainable make sketch) showing farm, center of section, this location with measurements and also wells, dry holes, or other locations in the vicinity of this location.



REMARKS:

SIGNED R. L. Yeager
 Superintendent or Foreman

