



Western Michigan University
ScholarWorks at WMU

Legacy Scout Tickets from Pure Oil Company

8-20-2021

MGRRE_PureOilScoutTickets_Roe, Frank_4_21115046990000

MGRRE

Western Michigan University

Follow this and additional works at: <https://scholarworks.wmich.edu/pure>



Part of the Geology Commons

WMU ScholarWorks Citation

MGRRE, "MGRRE_PureOilScoutTickets_Roe, Frank_4_21115046990000" (2021). *Legacy Scout Tickets from Pure Oil Company*. 6043.

<https://scholarworks.wmich.edu/pure/6043>

This Document is brought to you for free and open access via ScholarWorks at WMU. It has been accepted for inclusion in Legacy Scout Tickets from Pure Oil Company by an authorized administrator of ScholarWorks at WMU. See the National Digital Catalogue - Science Base Catalogue for more collections submitted by MGRRE.



MGRRE_PureOilScoutTickets_Roe, Frank_4_21115046990000

API 21115046990000

Permit Number 4699

Lease Name Roe, Frank

Well Number 4

County Monroe

Township 06S

Range 06E

Section 30

2021 DEQ or Pure co_name A V Oil and Gas Company

Pure Number 44

Latitude 41.93502

Longitude -83.76028

LOCATION REPORT

No. 44

DATE February 21, 1941

STATE Michigan COUNTY Monroe ~~DIST~~ TWP. Dundee SEC. 30 TOWN 6 S RANGE 6 E
~~PREC~~
 WELL No. 4 (SERIAL No. 44) FARM Frank Roe ACRES
 NAME OF STREAM OR WATERS QUADRANGLE SE NE NW
 OPERATOR A. V. Oil and Gas Company Map Dundee Township, Monroe County

Feet from North Line of Farm

" " East " " "

" " South " " "

" " West " " "

Feet from North Line of Section

" " East " " "

" " South " " "

" " West " " "

LEGEND

○ LOCATION

① RIG

⊕ DRILLING

☀ GAS WELL

● OIL WELL

⦿ SMALL OIL WELL

⊙ DRY HOLE

⦿ DRY SHOWING OIL

⊙ DRY SHOWING GAS

⦿ ABANDONED LOCATION

☀ ABANDONED GAS WELL

⦿ ABANDONED OIL WELL

NOTE: Below make tracing from map. (when no map is obtainable make sketch) showing farm, center of section, this location with measurements and also wells, dry holes, or other locations in the vicinity of this location.

Plugged and abandoned 2-23-40.

Total Depth 2140'.

REMARKS:

SIGNED

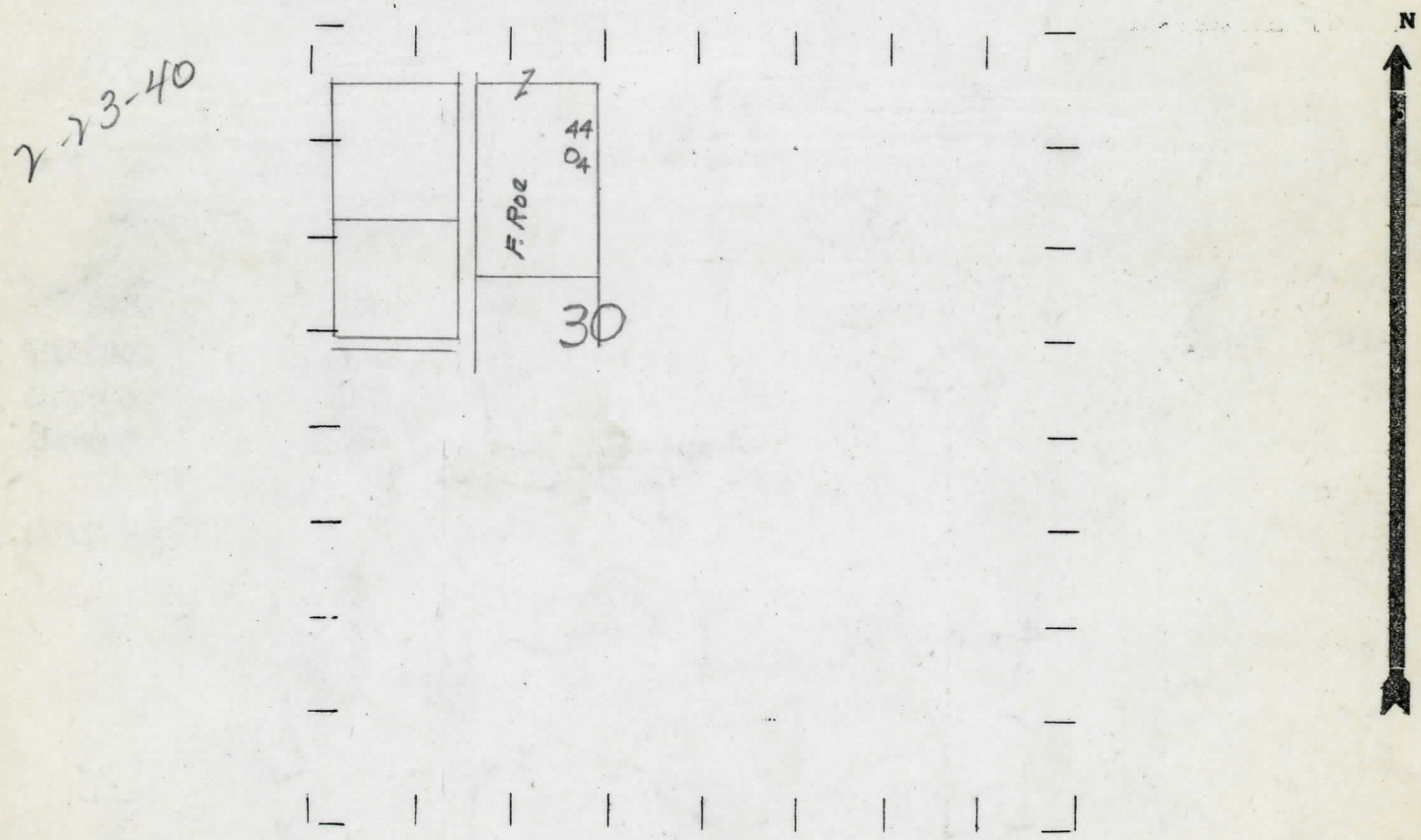
Superintendent or Foreman.

DATE December 9, 1931 LOCATION REPORT No. 44
 STATE Michigan COUNTY Monroe DIST. Dundee SEC. 30 TOWN 6 S RANGE 6 E
 WELL No. 4 (SERIAL No. 44) FARM Frank Roe ACRES
 NAME OF STREAM OR WATERS _____ QUADRANGLE SE-NE-NW
 OPERATOR A. V. Oil & Gas Company Map Dundee Township, Monroe County
A. V. Oil & Gas Co. Dundee - Monroe

225 225 Feet from North Line of Farm
 " " East " " "
 " " South " " "
 " " West " " "
850 Feet from North Line of Section
225 " " East " 1 1/4 "
 " " South " " "
 " " West " " "

- LEGEND**
- LOCATION
 - ⊕ RIG
 - ⊕ DRILLING
 - ☀ GAS WELL
 - OIL WELL
 - SMALL OIL WELL
 - ⊖ DRY HOLE
 - ⊕ DRY SHOWING OIL
 - ⊖ DRY SHOWING GAS
 - ⊖ ABANDONED LOCATION
 - ☀ ABANDONED GAS WELL
 - ABANDONED OIL WELL

NOTE: Below make tracing from map. (when no map is obtainable make sketch) showing farm, center of section, this location with measurements and also wells, dry holes, or other locations in the vicinity of this location.



REMARKS:

SIGNED R. L. Yeager
 Superintendent or Foreman.

Division

No. 44

Well No. 4 (Serial No. 44) County, Tex. Farm Frank Roe Acres

Operator A. V. Oil and Gas Company Information secured ~~from~~ Scouting Department

Date well started _____ Dated well completed **1-22-40** Elevation **677.1**

PRODUCTION RECORD

1st 24 hours natural **Dry Hole**

2nd 24 hours natural

Date of shot	No. of quarts	From	to	From	to
11-17-39	200				

[illegible]

shot
1st 24 hours after ~~burst~~ Hole filled up with Oil.

shot
2nd 24 hours after acid

FORMATION AND CASING RECORD

[illegible]

Remarks This well was cleaned out and shot, but was non-commercial.

Signed **D. C. Shackelford**