



Western Michigan University  
ScholarWorks at WMU

---

Legacy Scout Tickets from Pure Oil Company

---

8-20-2021

**MGRRE\_PureOilScoutTickets\_Erie O&G\_1\_21115005239000**

MGRRE

*Western Michigan University*

Follow this and additional works at: <https://scholarworks.wmich.edu/pure>



Part of the Geology Commons

---

#### **WMU ScholarWorks Citation**

MGRRE, "MGRRE\_PureOilScoutTickets\_Erie O&G\_1\_21115005239000" (2021). *Legacy Scout Tickets from Pure Oil Company*. 6045.

<https://scholarworks.wmich.edu/pure/6045>

This Document is brought to you for free and open access via ScholarWorks at WMU. It has been accepted for inclusion in Legacy Scout Tickets from Pure Oil Company by an authorized administrator of ScholarWorks at WMU. See the National Digital Catalogue - Science Base Catalogue for more collections submitted by MGRRE.



---

**MGRRE\_PureOilScoutTickets\_Erie O&G\_1\_21115005239000**

API 21115005239000

Permit Number None

Lease Name Erie O&G

Well Number 1

County Monroe

Township 08S

Range 07E

Section 31

2021 DEQ or Pure co\_name Erie Oil and Gas Company

Pure Number 46

Latitude 41.7417572

Longitude -83.6358695

THE PURE OIL COMPANY  
LOCATION REPORT

No. 46

DATE \_\_\_\_\_

STATE Mich. COUNTY Monroe DIST. Bedford SEC. 31 TOWN B-5 RANGE 7E  
WELL No. 1 (SERIAL No. 46) FARM \_\_\_\_\_ ACRES \_\_\_\_\_  
PREC. ?

NAME OF STREAM OR WATERS \_\_\_\_\_ QUADRANGLE S-53<sup>rd</sup> of E<sup>1/2</sup> of E<sup>1/2</sup>

OPERATOR Erie Oil & Gas Co. Map Bedford - Monroe

\_\_\_\_\_ Feet from North Line of Farm

\_\_\_\_\_ " " East " " "

\_\_\_\_\_ " " South " " "

\_\_\_\_\_ " " West " " "

\_\_\_\_\_ Feet from North Line of Section

\_\_\_\_\_ " " East " " "

\_\_\_\_\_ " " South " " "

\_\_\_\_\_ " " West " " "

LEGEND

○ LOCATION

⊙ RIG

⊕ DRILLING

☀ GAS WELL

● OIL WELL

⦿ SMALL OIL WELL

⊖ DRY HOLE

⦿ DRY SHOWING OIL

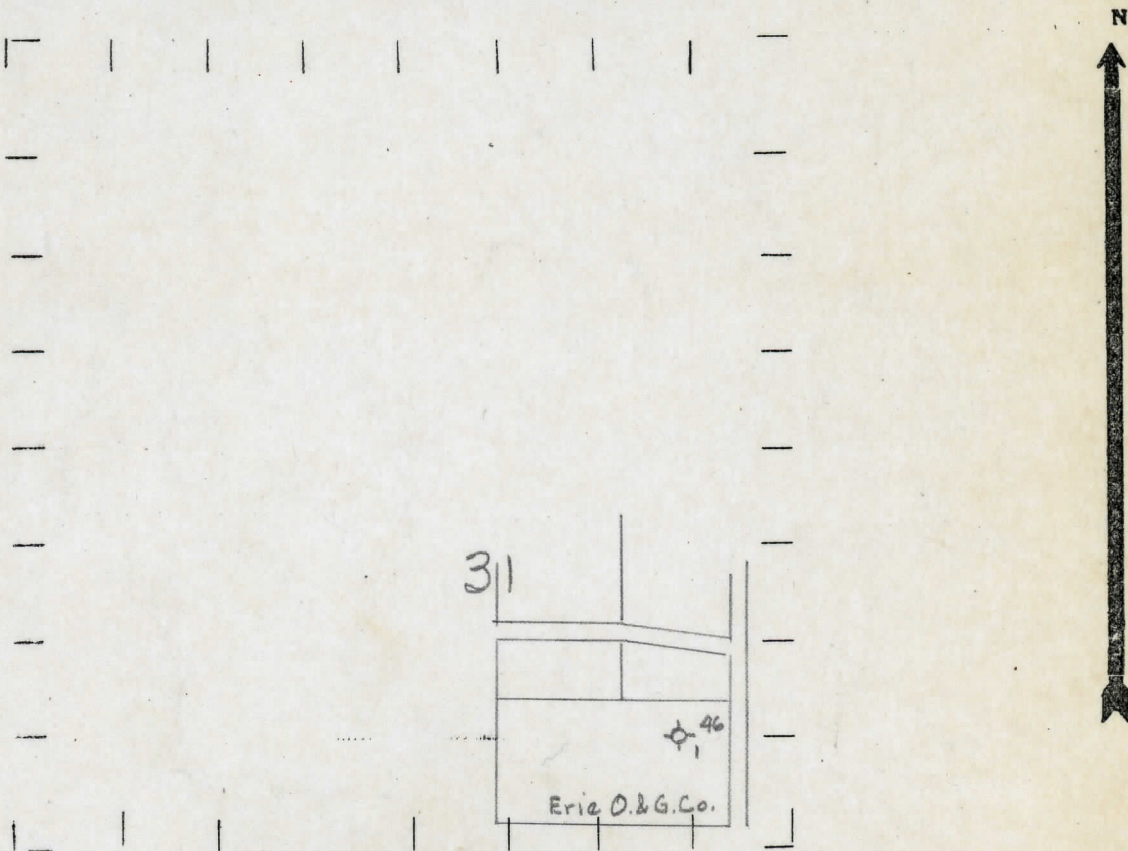
☀ DRY SHOWING GAS

⊖ ABANDONED LOCATION

☀ ABANDONED GAS WELL

⦿ ABANDONED OIL WELL

NOTE: Below make tracing from map, (when no map is obtainable make sketch) showing farm, center of section, this location with measurements and also wells, dry holes, or other locations in the vicinity of this location.



REMARKS:

SIGNED \_\_\_\_\_

Superintendent or Foreman.