



Western Michigan University
ScholarWorks at WMU

Legacy Scout Tickets from Pure Oil Company

8-20-2021

MGRRE_PureOilScoutTickets_Newcombe_1_unk

MGRRE

Western Michigan University

Follow this and additional works at: <https://scholarworks.wmich.edu/pure>



Part of the Geology Commons

WMU ScholarWorks Citation

MGRRE, "MGRRE_PureOilScoutTickets_Newcombe_1_unk" (2021). *Legacy Scout Tickets from Pure Oil Company*. 6046.

<https://scholarworks.wmich.edu/pure/6046>

This Document is brought to you for free and open access via ScholarWorks at WMU. It has been accepted for inclusion in Legacy Scout Tickets from Pure Oil Company by an authorized administrator of ScholarWorks at WMU. See the National Digital Catalogue - Science Base Catalogue for more collections submitted by MGRRE.



MGRRE_PureOilScoutTickets_Newcombe_1_unk

API unk

Permit Number unk

Lease Name Newcombe

Well Number 1

County Monroe

Township 07S

Range 06E

Section 27

2021 DEQ or Pure co_name Roy Gordon

Pure Number 47

Latitude 41.8438478

Longitude -83.6992931

THE PURE OIL COMPANY

LOCATION REPORT

DATE June 30, 1938

No. 47

STATE Michigan COUNTY Monroe DISTRICT Summerfield TWP. Summerfield SEC. 27 TOWN 7 S RANGE 6 E

WELL No. 1 (SERIAL No. 47) FARM Newcombe ACRES

NAME OF STREAM OR WATERS QUADRANGLE SW-SW-NW, SW SW NW

OPERATOR Drilled by Roy Gordon Map Summerfield Township, Monroe County
Drilled by Roy Gordon Summerfield - Monroe

Feet from North Line of Farm

" " East " " "

" " South " " "

" " West " " "

Feet from North Line of Section

" " East " " "

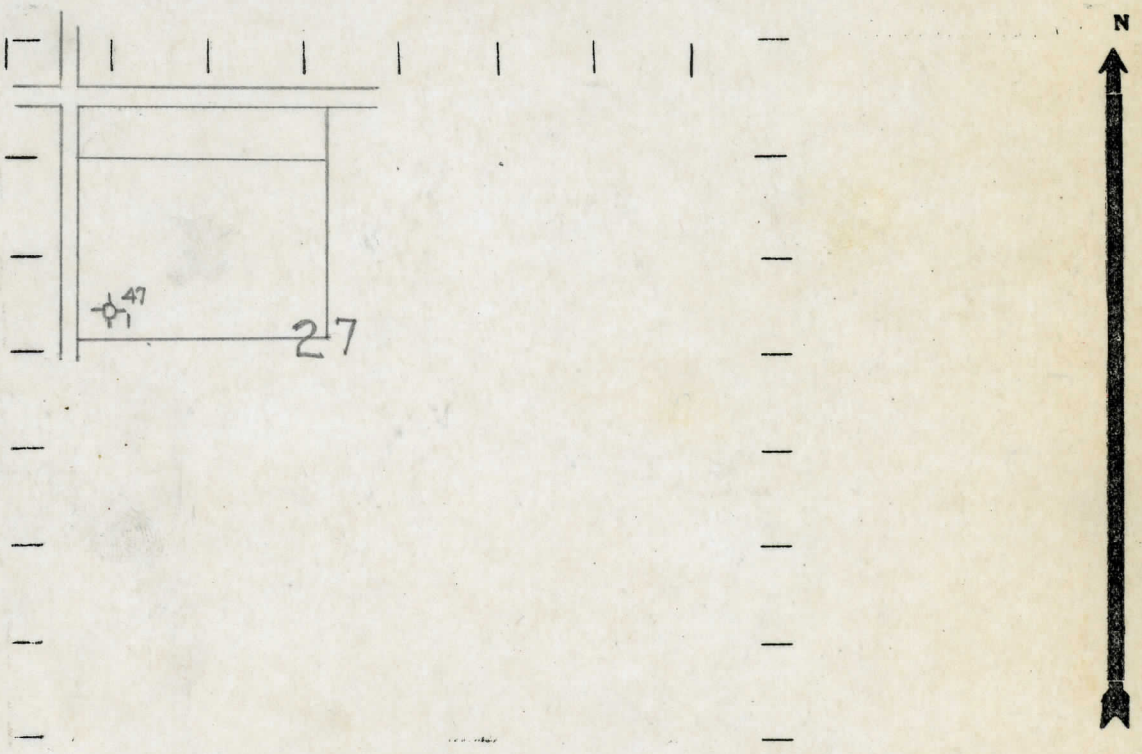
" " South " " "

" " West " " "

LEGEND

- LOCATION
- ⊕ RIG
- ⊕ DRILLING
- ☀ GAS WELL
- OIL WELL
- ⬮ SMALL OIL WELL
- ⊙ DRY HOLE
- ⬮ DRY SHOWING OIL
- ☀ DRY SHOWING GAS
- ⊙ ABANDONED LOCATION
- ☀ ABANDONED GAS WELL
- ⬮ ABANDONED OIL WELL

NOTE: Below make tracing from map, (when no map is obtainable make sketch) showing farm, center of section, this location with measurements and also wells, dry holes, or other locations in the vicinity of this location.



REMARKS: No Geological record of well other than total depth 1886'.

SIGNED R. L. Yeager
Superintendent or Foreman.